

Murata Components Library for Agilent ADS Install Manual

1. Introduction

This manual describes how to install and use Murata Components Library for Agilent ADS. Although operating the Library in accordance with this manual can basically perform the required operations, some operations may differ partially depending on the environment used. This manual is described based on the following environment. See the manuals for the PC, etc. used in the actual environment.

<Environment used in this manual>

Platform : PC
OS : Windows2000
ADS : ADS2005A (Can not use with older version than ADS2005A)

If previous version of the library is installed, delete previous version before install new version as follows.

1. Start ADS.
2. Select "Design Kit" -> "Setup Design Kits..." in the main window.
3. Select "muRataLibWeb" in "Over view" in "Setup ADS Design Kits" window, and click "Cut" button, then click "OK" button to close the window.
4. Shutdown ADS and delete installed files. (all files under "muRata_DK" folder)

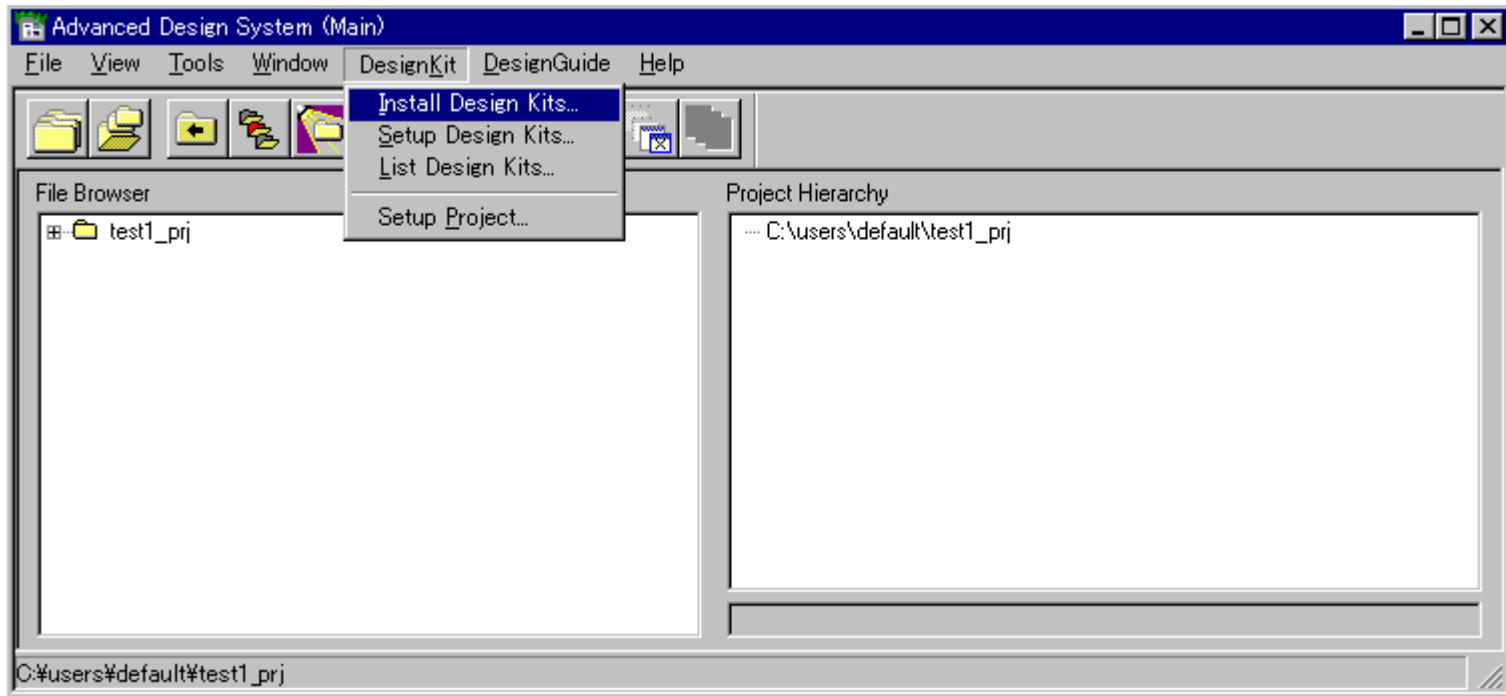
2. Download the Library

Download the library from the following URL

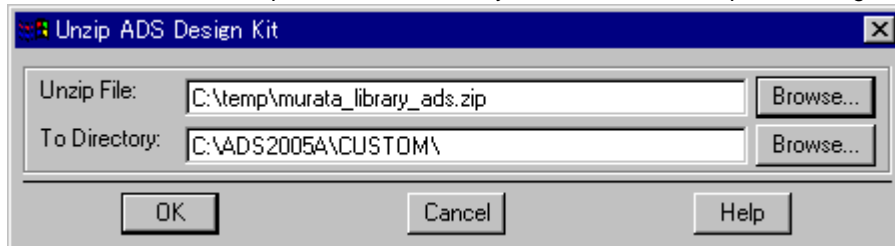
<http://www.murata.com/designlib/agilent/index.html>

3. Installing the Library

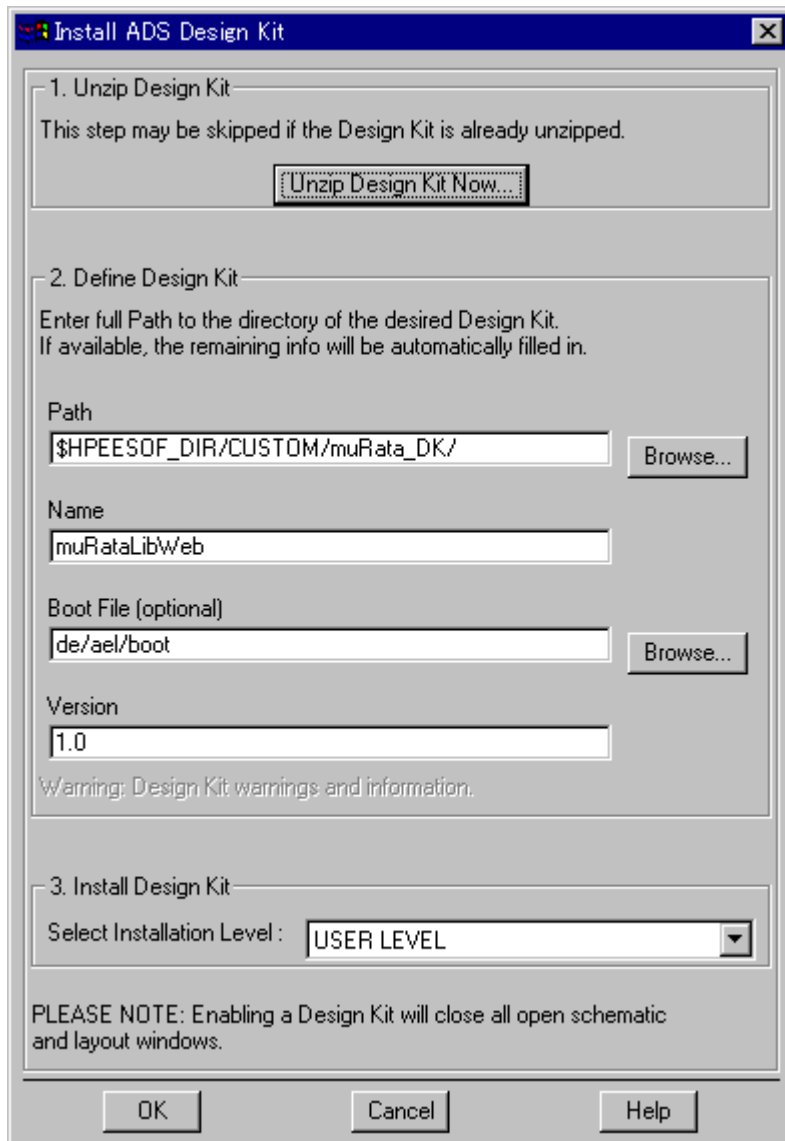
1. Start ADS.
2. Select "Design Kit" -> "Install Design Kits..." in the main window.



3. Click the “Unzip Design Kit Now...” button in the “Install Design Kit” window, then “Unzip ADS Design Kit” window will appear.
4. Set the downloaded Zip file and the directory to install in the “Unzip ADS Design Kit” window.



5. Click “OK” button, then the library will be unzipped automatically to the install directory, and “Path”, “Name”, “Boot File” and “Version” will be automatically entered.



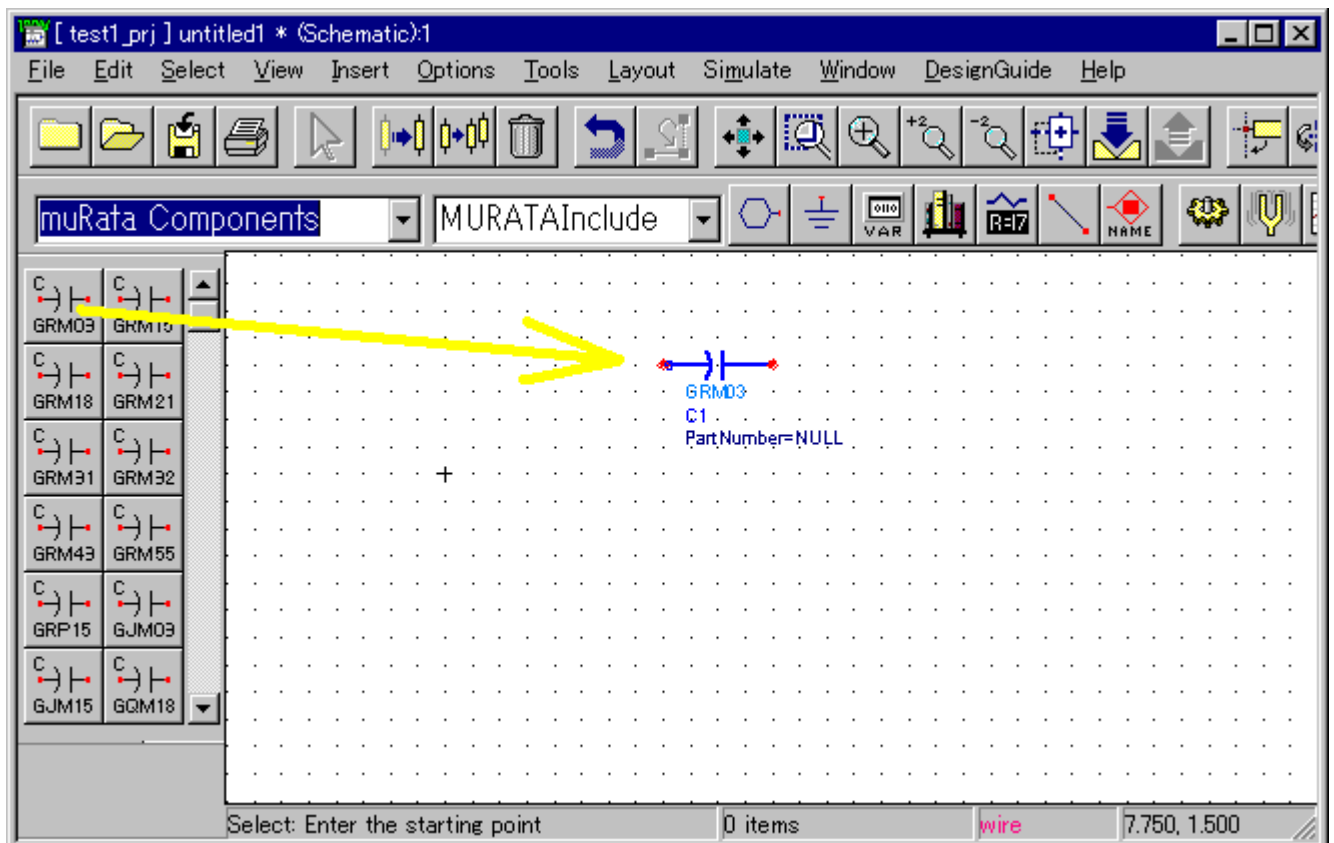
6. Select Installation Level at "3. Install Design Kit" in the "Install ADS Design Kit" window.
7. Click "OK" button, then the following message will be appear after the library will be loaded. Click "OK" button again to close the message window.



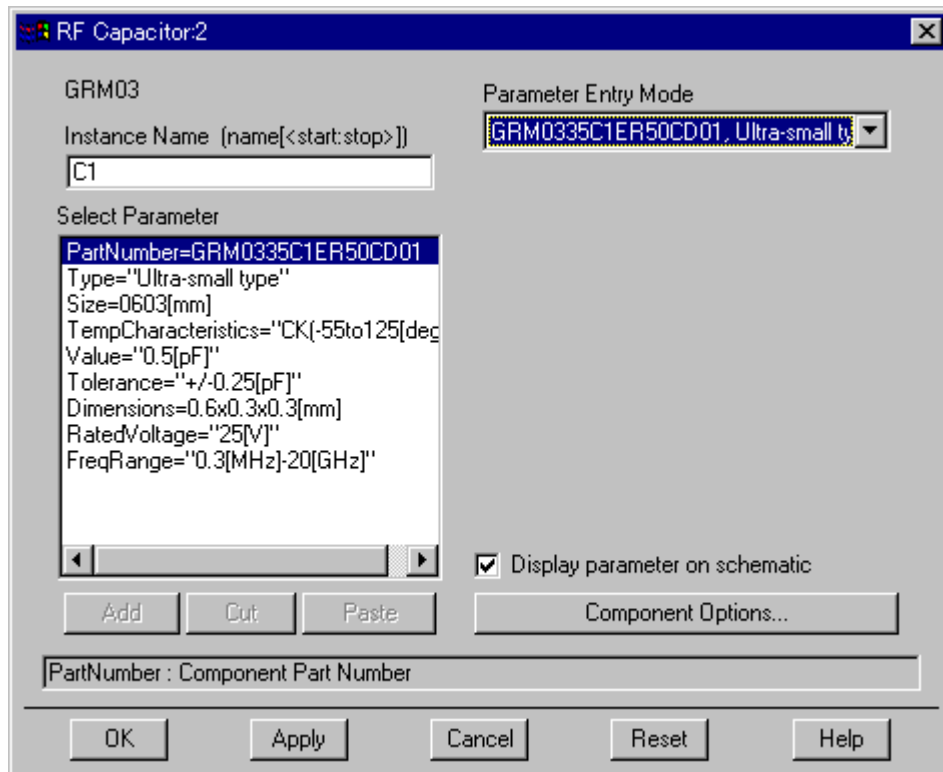
8. Then, restart ADS.

4. Using Murata Library

1. Start ADS.
2. Open a project file and open the schematic window.
3. Select "muRata Components" at the component pallet list in the schematics window, and select the component you use. Then drag & drop the component to the schematic.



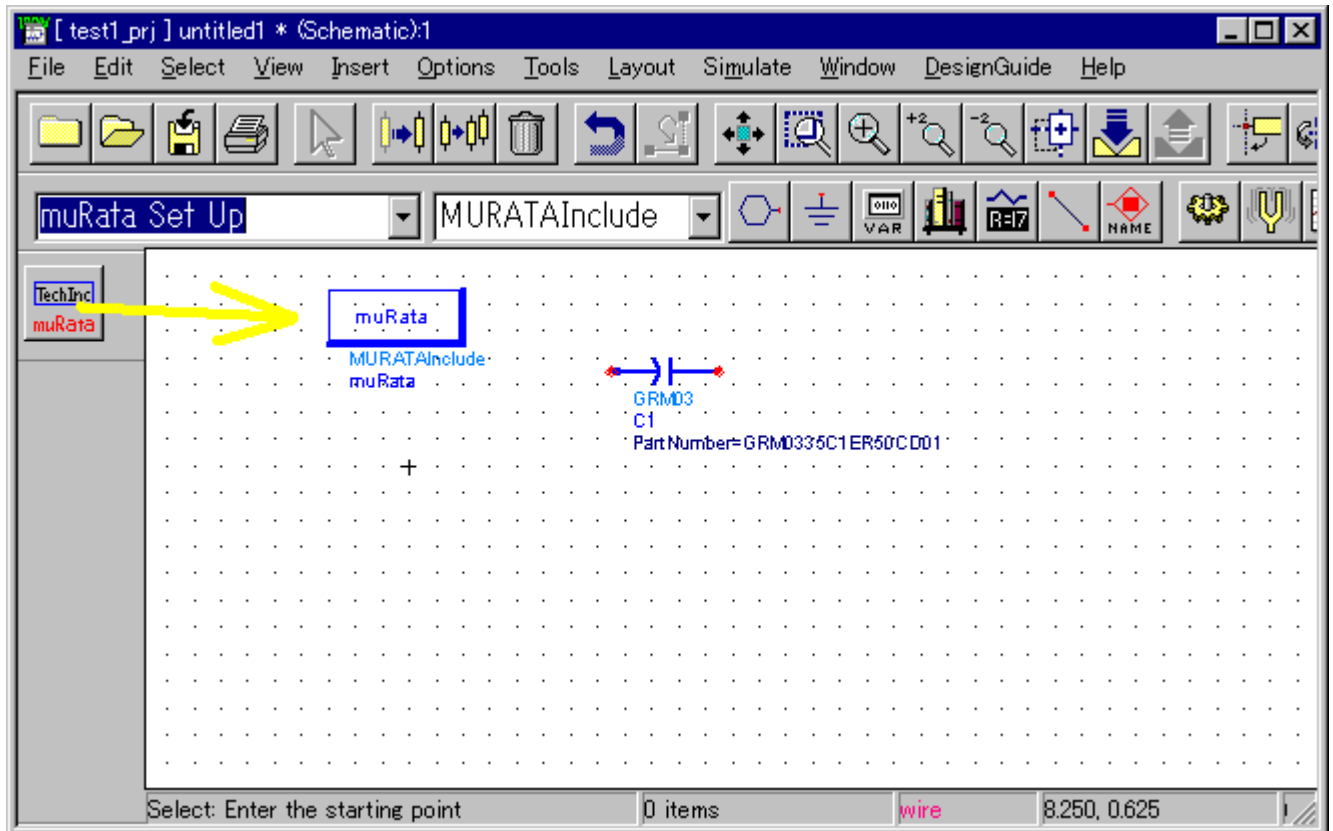
4. Double-Click on the component you set, and select part number you use in the parameter-setting window.



5. Complete the schematic with the other components. You have to set the muRata_TechInclude component in the “muRata Set Up” pallet if you use the muRata components.

If you would like to set muRata_TechInclude component automatically, execute following operations.

1. Open de/ael/MURATAweb_cfg.ael file, which is under ADS install folder with text editor such as Notepad.
decl MURATAweb_Insert_ModelInclude=FALSE; //TRUE or FALSE
2. Change following line in the opened file. (FALSE -> TRUE)
(Before)
decl MURATAweb_Insert_ModelInclude=FALSE; //TRUE or FALSE
(After)
decl MURATAweb_Insert_ModelInclude=TRUE; //TRUE or FALSE
3. Save the file and if ADS is loaded, restart ADS.



6. The Discrete Optimize function is available since Version 2.0. When you use this function, Select "Discrete Optimize setting" on the PartNumber list in the parameter-setting window. And specify Nominal Value, Minimum Value, Maximum Value.

