

PKM22EPH2001-B0

Discontinued

RoHS

REACH

Applications

Unsuitable Applications	Please be sure to read and comply with these "Precautions for use."
Specific Applications	Consumer equipment, Industrial Equipment Please refer to Our Website and specifications, etc. for information about the performance, functions, quality, management, and safety required for the above applications, and use Products after confirming the performance and reliability of the actual Product.

Packaging Information

Packaging	Specifications	Standard Packing Quantity
-B0	Bulk	1200

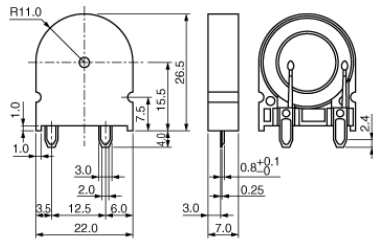
Features

Externally driven piezoelectric sounders are used in digital watches, electronic calculators, telephones and other equipment. They are driven by a signal (ex.: 2048Hz or 4096Hz) from an LSI and provide melodious sound.

Features

1. Low power consumption
2. No noise and high reliability

Appearance & Shape



Tol.: ±0.5
(in mm)

Attention

1. This datasheet is downloaded from the website of Murata Manufacturing Co., Ltd. Therefore, its specifications are subject to change or our products in it may be discontinued without advance notice. Please check with our sales representatives or product engineers before ordering.

2. This datasheet has only typical specifications because there is no space for detailed specifications.

Therefore, please review our product specifications or consult the approval sheet for product specifications before ordering.

PKM22EPTH2001-B0



Specifications

Oscillation circuits	Not built-in
Size	22.0×7.0×26.5 mm
Frequency	2.0kHz
Sound Pressure Level	70dB (min.)
Measure Condition of Sound Pressure Level	[3.0Vp-p,2.0kHz,square wave, 10cm]
Capacitance	19nF
Capacitance Tolerance	±30%
Measurement Condition of Capacitance	[120Hz]
Maximum input voltage	±12.5Vo-p max.
Operating Temperature Range	-20°C to 70°C
Storage Temperature Range	-40°C to 80°C
Shape	Lead
Lead Shape	Pin type
Lead length	Lead length:4.0mm
Drive Type	External Drive
EIAJ Part Number	PS-RP2-V27-20
Mass	2193mg

Attention

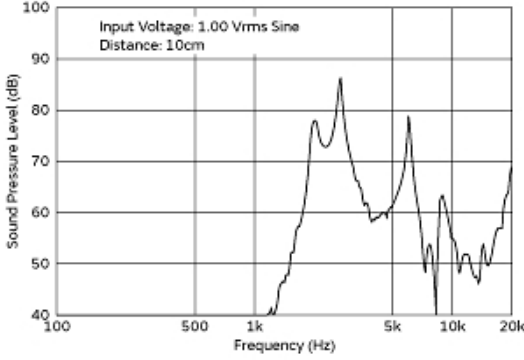
1.This datasheet is downloaded from the website of Murata Manufacturing Co., Ltd. Therefore, it's specifications are subject to change or our products in it may be discontinued without advance notice. Please check with our sales representatives or product engineers before ordering.

2.This datasheet has only typical specifications because there is no space for detailed specifications.

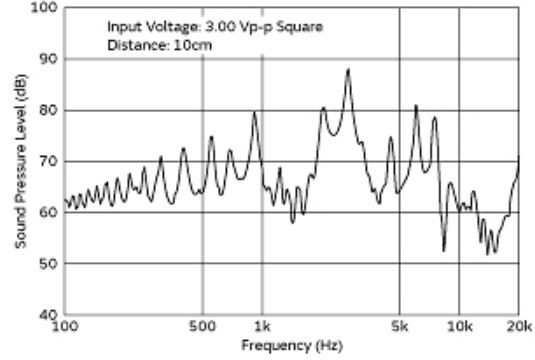
Therefore, please review our product specifications or consult the approval sheet for product specifications before ordering.

PKM22EPH2001-B0

Product Data



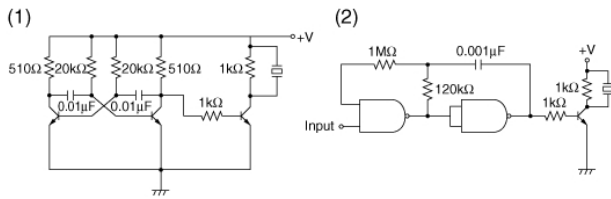
Frequency Characteristics (sine wave)



Frequency Characteristics (square wave)

The following are examples of externally driven circuits.

- (1) Unstable multi-vibrator using Tr.
- (2) Circuits using inverters or NAND gates.



Recommended Circuit

Attention

- 1.This datasheet is downloaded from the website of Murata Manufacturing Co., Ltd. Therefore, it's specifications are subject to change or our products in it may be discontinued without advance notice. Please check with our sales representatives or product engineers before ordering.
- 2.This datasheet has only typical specifications because there is no space for detailed specifications.
Therefore, please review our product specifications or consult the approval sheet for product specifications before ordering.