

# SFZLA455KN2A-B0

Discontinued

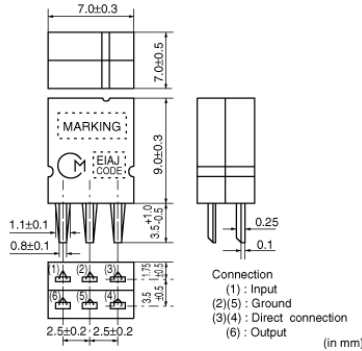
RoHS

REACH

## Applications

|                         |  |
|-------------------------|--|
| Unsuitable Applications | Please be sure to read and comply with these "Precautions for use."  |
| Specific Applications   | Consumer equipment<br>Please refer to Our Website and specifications, etc. for information about the performance, functions, quality, management, and safety required for the above applications, and use Products after confirming the performance and reliability of the actual Product. |

## Appearance & Shape



## Packaging Information

| Packaging | Specifications | Standard Packing Quantity |
|-----------|----------------|---------------------------|
| -B0       | Bulk           | 200                       |

## Features

SFZLAseries for AM use is one of the most recommendable intermediate filters, having such distinctive features as high selectivity, high stability, and adjustment-free operation. Additionally its easy matching with IC helps create an easy circuit design.

### Features

1. Center frequency range between 450 to 470kHz are available standard tolerance of  $\pm 2$ kHz.
2. For frequency synthesizers, center frequencies of 450, 459 and 468kHz are available standard tolerance of  $\pm 1$ kHz.

### Attention

1. This datasheet is downloaded from the website of Murata Manufacturing Co., Ltd. Therefore, its specifications are subject to change or our products in it may be discontinued without advance notice. Please check with our sales representatives or product engineers before ordering.

2. This datasheet has only typical specifications because there is no space for detailed specifications.

Therefore, please review our product specifications or consult the approval sheet for product specifications before ordering.

# SFZLA455KN2A-B0



## Specifications

|                             |                                  |
|-----------------------------|----------------------------------|
| Operating Temperature Range | -20°C to 80°C                    |
| Shape                       | Lead                             |
| Elements                    | 2                                |
| Center Frequency            | 455.5kHz                         |
| Center Frequency Tolerance  | ±2kHz                            |
| Nominal Center Value        | No                               |
| 3dB Bandwidth               | 4.0kHz±1.0kHz                    |
| Selectivity(+)              | 23dB[fo+9kHz]                    |
| Selectivity(-)              | 23dB[fo-9kHz]                    |
| Spurious Attenuation        | 20dBmin.[within 0.1 to 3MHz]     |
| Insertion Loss              | 7.0dBmax.(at minimum loss point) |
| Ripple                      | 1.5dBmax.[within 3dBB.W.]        |
| GDT Deviation               | 20μsec.                          |
| Input/Output Impedance      | 3000Ω                            |
| Mass                        | 726mg                            |

### Attention

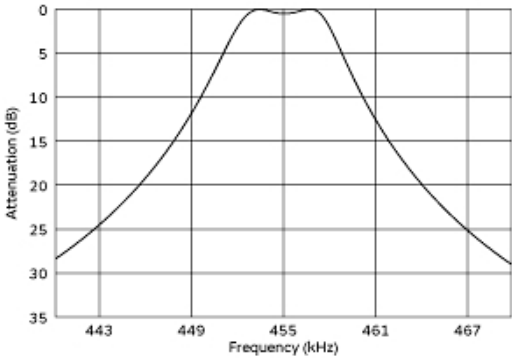
1.This datasheet is downloaded from the website of Murata Manufacturing Co., Ltd. Therefore, it's specifications are subject to change or our products in it may be discontinued without advance notice. Please check with our sales representatives or product engineers before ordering.

2.This datasheet has only typical specifications because there is no space for detailed specifications.

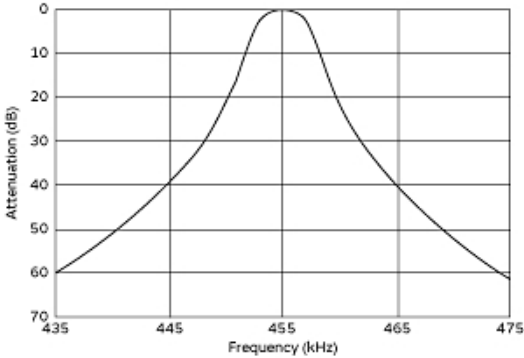
Therefore, please review our product specifications or consult the approval sheet for product specifications before ordering.

# SFZLA455KN2A-B0

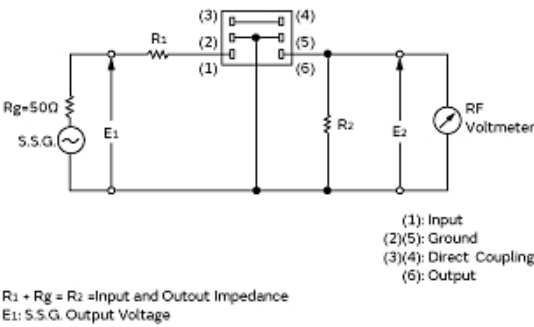
## Product Data




Frequency Characteristics (filter Only)



Frequency Characteristics (with Ift)



Measurement Circuit

| Item   | Type        | SFULA□□B  |         |         | SFZLA□□A |         |         |
|--|-------------|-----------|---------|---------|----------|---------|---------|
|  |             | 7x7mm IFT |         |         |          |         |         |
| Winding Specification  |             | (1)─(2)   | (2)─(3) | (4)─(6) | (1)─(2)  | (2)─(3) | (4)─(6) |
| S(3)<br>(2)<br>(1)<br><br>(Bottom view) | (4)S<br>(6) | 70T       | 115T    | 7T      | 68T      | 84T     | 14T     |
| No load $Q_u$  |             | 105       |         |         | 90       |         |         |
| Tuning Capacitance   |             | 180pF     |         |         | 180pF    |         |         |

• Matching of CERAFIL® SFULA/SFZLA series with IFT is decided by the IFT secondary side impedance, [Z2]. The design target values of [Z2] are:  
For SFULA□□B : 300Ω  
For SFZLA□□A : 1kΩ

Recommended Ift

### Attention

- 1.This datasheet is downloaded from the website of Murata Manufacturing Co., Ltd. Therefore, it's specifications are subject to change or our products in it may be discontinued without advance notice. Please check with our sales representatives or product engineers before ordering.
- 2.This datasheet has only typical specifications because there is no space for detailed specifications.  
Therefore, please review our product specifications or consult the approval sheet for product specifications before ordering.