

# SFSKA4M50CF00-R3

Discontinued

RoHS

REACH

## Applications

|                         |  |
|-------------------------|--|
| Unsuitable Applications | Please be sure to read and comply with these "Precautions for use."  |
| Specific Applications   | Consumer equipment<br>Please refer to Our Website and specifications, etc. for information about the performance, functions, quality, management, and safety required for the above applications, and use Products after confirming the performance and reliability of the actual Product. |

## Appearance & Shape



## Packaging Information

| Packaging | Specifications      | Standard Packing Quantity |
|-----------|---------------------|---------------------------|
| -R3       | 330mm Embossed Tape | 3000                      |

## Features

SMD ceramic filter SFSKA\_CF is a small and thin SMD filter sealed with a metal cap. Recommended for LCD-TVs, and small and thin tuners.

### Features

1. High attenuation outside bandwidth.
2. Small and thin package.
3. Reflow-solderable.

### Attention

1.This datasheet is downloaded from the website of Murata Manufacturing Co., Ltd. Therefore, it's specifications are subject to change or our products in it may be discontinued without advance notice. Please check with our sales representatives or product engineers before ordering.

2.This datasheet has only typical specifications because there is no space for detailed specifications.

Therefore, please review our product specifications or consult the approval sheet for product specifications before ordering.

# SFSKA4M50CF00-R3



## Specifications

|                             |                            |
|-----------------------------|----------------------------|
| Operating Temperature Range | -20°C to 80°C              |
| Shape                       | SMD                        |
| Elements                    | 2                          |
| Center Frequency            | 4.500MHz                   |
| Nominal Center Value        | Yes                        |
| 3dB Bandwidth               | $f_n \pm 60\text{kHzmin.}$ |
| Stop Bandwidth              | 600kHz                     |
| Spurious Attenuation        | 20dB[within 0 to $f_n$ ]   |
| Insertion Loss              | 6.0dBmax.                  |
| Input/Output Impedance      | 1000Ω                      |
| Mass                        | 137mg                      |

### Attention

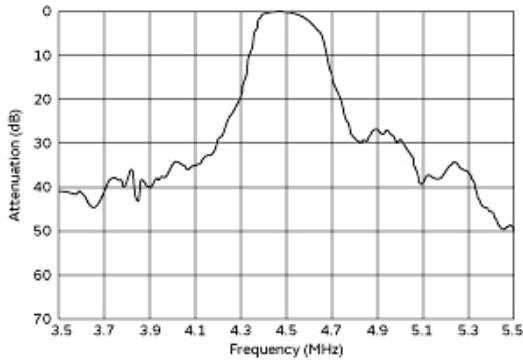
1.This datasheet is downloaded from the website of Murata Manufacturing Co., Ltd. Therefore, it's specifications are subject to change or our products in it may be discontinued without advance notice. Please check with our sales representatives or product engineers before ordering.

2.This datasheet has only typical specifications because there is no space for detailed specifications.

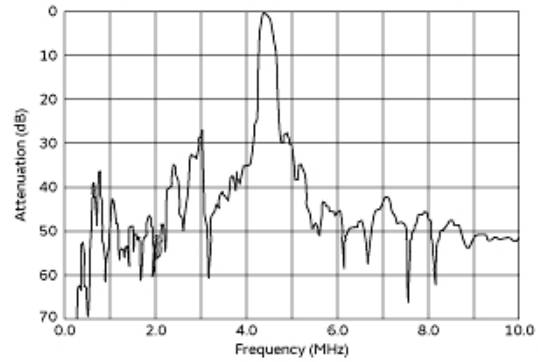
Therefore, please review our product specifications or consult the approval sheet for product specifications before ordering.

# SFSKA4M50CF00-R3

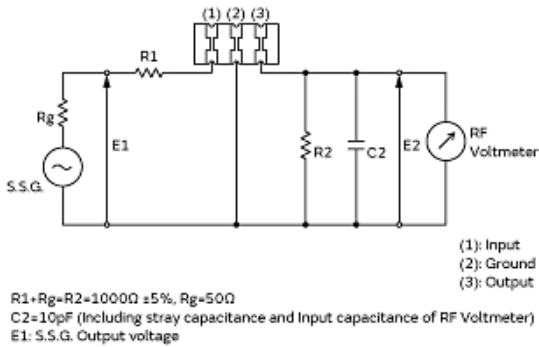
## Product Data



Frequency Characteristics



Spurious Response



Measurement Circuit

### Attention

- 1.This datasheet is downloaded from the website of Murata Manufacturing Co., Ltd. Therefore, it's specifications are subject to change or our products in it may be discontinued without advance notice. Please check with our sales representatives or product engineers before ordering.
- 2.This datasheet has only typical specifications because there is no space for detailed specifications.  
Therefore, please review our product specifications or consult the approval sheet for product specifications before ordering.