

PKB24SPCH3601-B0

In Production

RoHS

REACH

Applications

| | |
|-------------------------|--|
| Unsuitable Applications | Please be sure to read and comply with these "Precautions for use." |
| Specific Applications | Consumer equipment, Industrial Equipment Please refer to Our Website and specifications, etc. for information about the performance, functions, quality, management, and safety required for the above applications, and use Products after confirming the performance and reliability of the actual Product. |

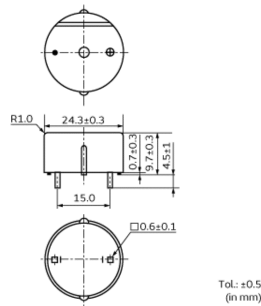
Packaging Information

| Packaging | Specifications | Standard Packing Quantity |
|-----------|----------------|---------------------------|
| -B0 | Bulk | 650 |

Features

This is a unified piezoelectric sounder which has a piezoelectric diaphragm of 3 terminals connected to a self drive circuit, and it easily generates sound with only a DC power supply (DC3.0-20V). Using suitably designed resonant system, this type can be used where large sound volumes are needed.

Appearance & Shape



Attention

1. This datasheet is downloaded from the website of Murata Manufacturing Co., Ltd. Therefore, its specifications are subject to change or our products in it may be discontinued without advance notice. Please check with our sales representatives or product engineers before ordering.

2. This datasheet has only typical specifications because there is no space for detailed specifications.

Therefore, please review our product specifications or consult the approval sheet for product specifications before ordering.

PKB24SPCH3601-B0



Specifications

| | |
|--|-------------------|
| Oscillation circuits | Built-in |
| Size | φ24.3×10.0 mm |
| Frequency | 3.6kHz |
| Sound Pressure Level | 90dB (min.) |
| Measure Condition of Sound Pressure Level | [12Vdc, 10cm] |
| Oscillating Frequency | 3.6kHz |
| Oscillating Frequency Tolerance | ±0.5kHz |
| Measure Condition of Oscillation Frequency | [12Vdc] |
| Current Consumption(max.) | 16mA |
| Measure Condition of Current Consumption | [12Vdc] |
| Operating Voltage Range | 3Vdc to 15Vdc |
| Operating Temperature Range | -20°C to 70°C |
| Storage Temperature Range | -30°C to 80°C |
| Shape | Lead |
| Lead Shape | Pin type |
| Lead length | Lead length:4.5mm |
| Drive Type | Self Drive |
| EIAJ Part Number | PB-RPD-C24-36 |
| Mass | 3593mg |

Attention

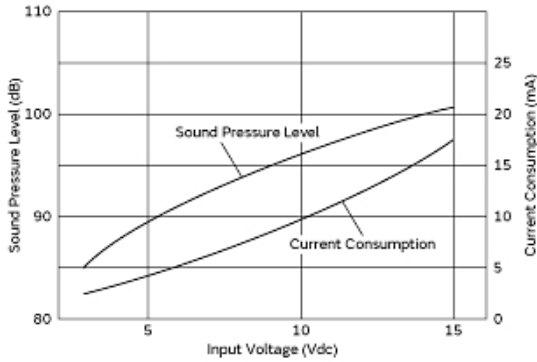
1.This datasheet is downloaded from the website of Murata Manufacturing Co., Ltd. Therefore, it's specifications are subject to change or our products in it may be discontinued without advance notice. Please check with our sales representatives or product engineers before ordering.

2.This datasheet has only typical specifications because there is no space for detailed specifications.

Therefore, please review our product specifications or consult the approval sheet for product specifications before ordering.

PKB24SPCH3601-B0

Product Data



Voltage Characteristics

Attention

- 1.This datasheet is downloaded from the website of Murata Manufacturing Co., Ltd. Therefore, it's specifications are subject to change or our products in it may be discontinued without advance notice. Please check with our sales representatives or product engineers before ordering.
- 2.This datasheet has only typical specifications because there is no space for detailed specifications.
Therefore, please review our product specifications or consult the approval sheet for product specifications before ordering.