

PKM22EPPH4005-B0

In Production

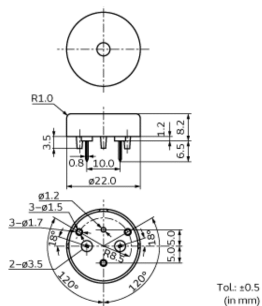
RoHS

REACH

## Applications

|                         |                                                                                                                                                                                                                                                                                                                             |
|-------------------------|-----------------------------------------------------------------------------------------------------------------------------------------------------------------------------------------------------------------------------------------------------------------------------------------------------------------------------|
| Unsuitable Applications | Please be sure to read and comply with these "Precautions for use."                                                                                                                                                                                                                                                         |
| Specific Applications   | <p>Consumer equipment, Industrial Equipment</p> <p>Please refer to Our Website and specifications, etc. for information about the performance, functions, quality, management, and safety required for the above applications, and use Products after confirming the performance and reliability of the actual Product.</p> |

## Appearance & Shape



## Packaging Information

| Packaging | Specifications | Standard Packing Quantity |
|-----------|----------------|---------------------------|
| -B0       | Bulk           | 750                       |

## Features

Externally driven piezoelectric sounders are used in digital watches, electronic calculators, telephones and other equipment. They are driven by a signal (ex.: 2048Hz or 4096Hz) from an LSI and provide melodious sound.

## Features

1. Low power consumption
2. No noise and high reliability

### Attention

- 1.This datasheet is downloaded from the website of Murata Manufacturing Co., Ltd. Therefore, it's specifications are subject to change or our products in it may be discontinued without advance notice. Please check with our sales representatives or product engineers before ordering.
- 2.This datasheet has only typical specifications because there is no space for detailed specifications.  
Therefore, please review our product specifications or consult the approval sheet for product specifications before ordering.

# PKM22EPPH4005-B0



## Specifications

|                                           |                                     |
|-------------------------------------------|-------------------------------------|
| Oscillation circuits                      | Not built-in                        |
| Size                                      | φ22.0×8.2 mm                        |
| Frequency                                 | 4.0kHz                              |
| Sound Pressure Level                      | 86dB (typ.)                         |
| Sound Pressure Level                      | 75dB (min.)                         |
| Measure Condition of Sound Pressure Level | [±1.5Vo-p,4.0kHz,square wave, 10cm] |
| Capacitance                               | 12nF                                |
| Capacitance Tolerance                     | ±30%                                |
| Measurement Condition of Capacitance      | [1kHz]                              |
| Maximum input voltage                     | ±15.0Vo-p max.                      |
| Operating Temperature Range               | -20°C to 70°C                       |
| Storage Temperature Range                 | -30°C to 80°C                       |
| Shape                                     | Lead                                |
| Lead Shape                                | Pin type                            |
| Lead length                               | Lead length:6.5mm                   |
| Drive Type                                | External Drive                      |
| EIAJ Part Number                          | PS-RP2-C22-40                       |
| Mass                                      | 2867mg                              |

### Attention

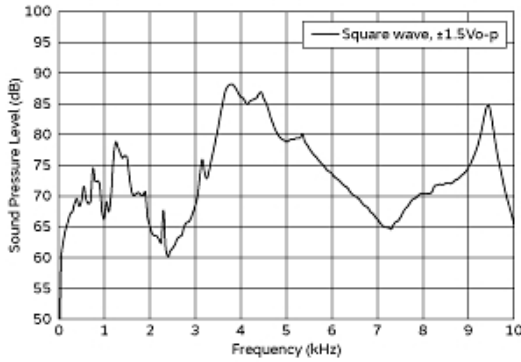
1.This datasheet is downloaded from the website of Murata Manufacturing Co., Ltd. Therefore, it's specifications are subject to change or our products in it may be discontinued without advance notice. Please check with our sales representatives or product engineers before ordering.

2.This datasheet has only typical specifications because there is no space for detailed specifications.

Therefore, please review our product specifications or consult the approval sheet for product specifications before ordering.

# PKM22EPPH4005-B0

## Product Data

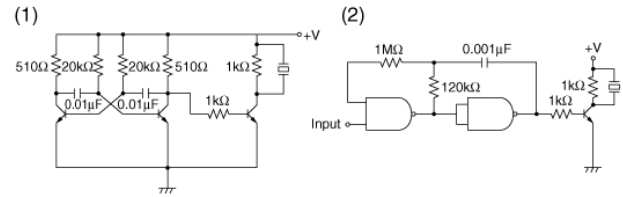


Frequency Response

The following are examples of externally driven circuits.

(1) Unstable multi-vibrator using Tr.

(2) Circuits using inverters or NAND gates.



Recommended Circuit

### Attention

1. This datasheet is downloaded from the website of Murata Manufacturing Co., Ltd. Therefore, its specifications are subject to change or our products in it may be discontinued without advance notice. Please check with our sales representatives or product engineers before ordering.

2. This datasheet has only typical specifications because there is no space for detailed specifications.

Therefore, please review our product specifications or consult the approval sheet for product specifications before ordering.