

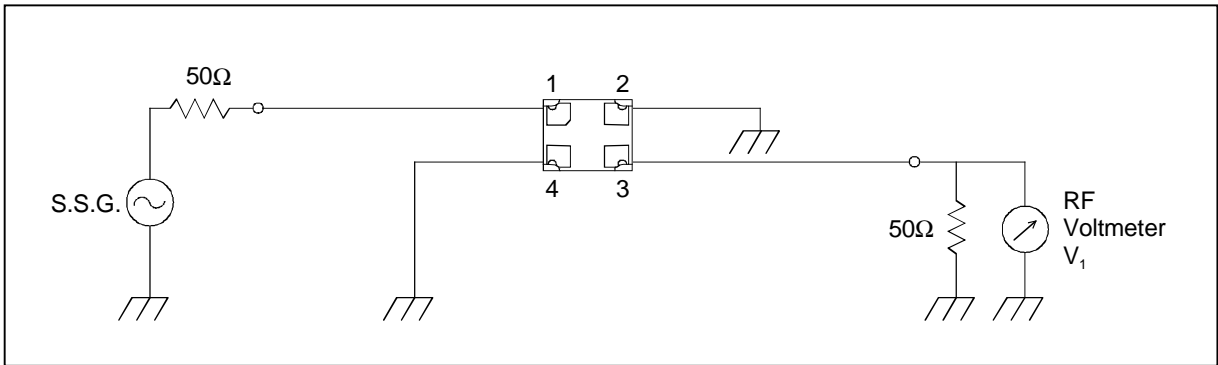
SAW FILTER FOR US-PCS (Rx)

Murata part number : SAFEF1G96KC0F00

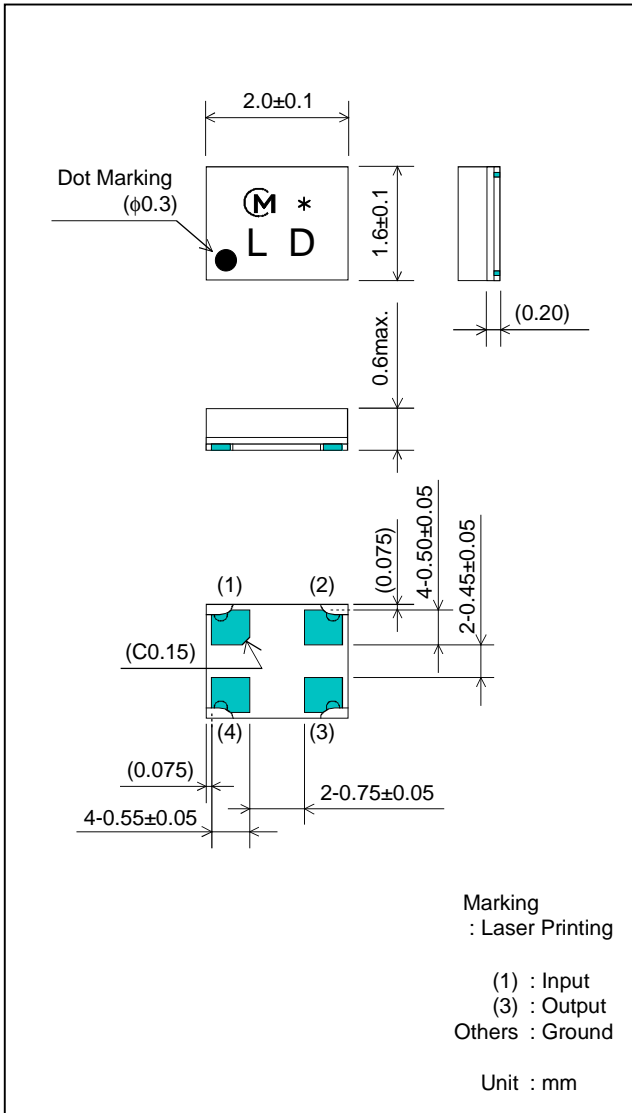
Feature

1. Ultra Small SMD package (2.0x1.6mm package)
2. High Attenuation (at 1850 to 1910MHz ; 20 dB min.)

Test Circuit



Package Dimensions



Specification

Item	Specification	
	-30 to +85°C	typ.
Nominal Center Frequency(f_c)	1960 MHz	
Insertion Loss (1930 to 1990 MHz)	3.2 dB max.	2.2 dB
Absolute Attenuation		
1) 0.1 to 1850 MHz	20 dB min.	23 dB
2) 1850 to 1910 MHz	20 dB min.	27 dB
3) 2100 to 4000 MHz	20 dB min.	25 dB
Ripple Deviation (1930 to 1990 MHz)	2.0 dB max.	0.9 dB
VSWR (1930 to 1990 MHz)	2.1 max.	1.6
Input/Output Impedance (nominal)	50Ω	

SAW FILTER FOR US-PCS (Rx)

Murata part number : SAFEF1G96KC0F00

Frequency Performance

