

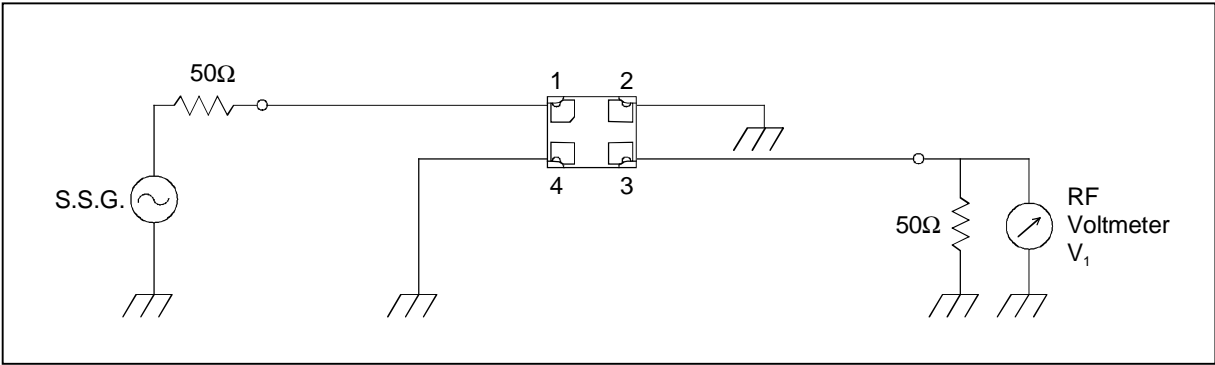
SAW FILTER FOR CDMA800/TDMA800/E-AMPS/GSM850(Tx)

Murata part number : SAFEF836MAL0F00

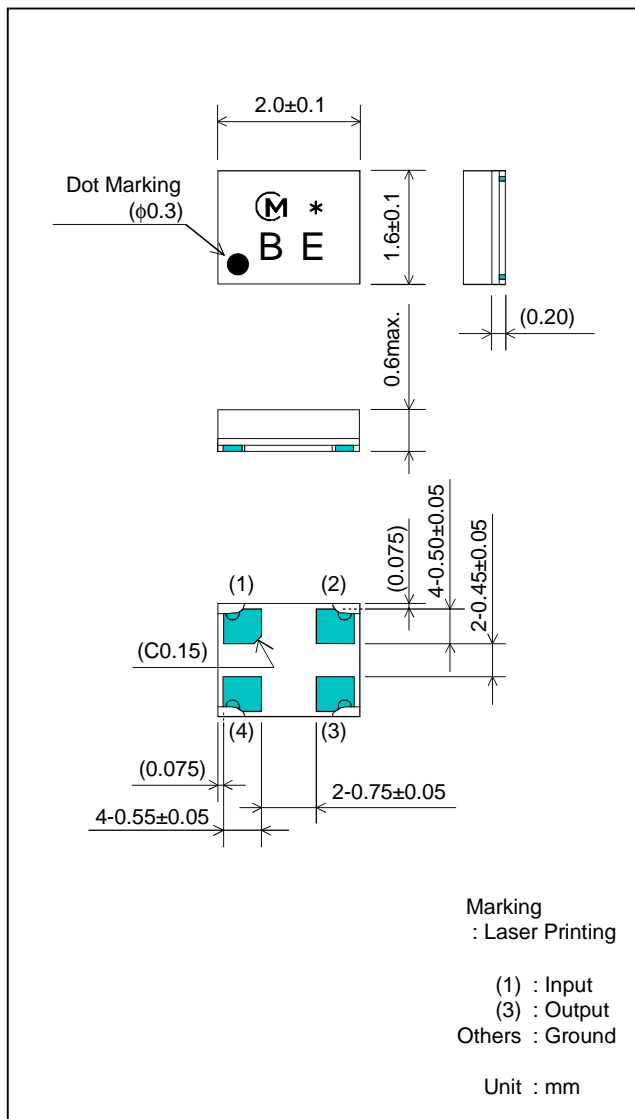
Feature

1. Ultra Small SMD package (2.0x1.6mm package)
2. High Attenuation (at 869 to 894MHz ; 38 dB min.)

Test Circuit



Package Dimensions



Specification

Item	Specification		
	-30 to 85°C	25±2°C	typ.
Nominal Center Frequency(fc)	836.5MHz		
Insertion Loss (824 to 849MHz)	2.8 dB max.	2.4 dB max.	2.2 dB
Absolute Attenuation			
1) 0.1 to 800 MHz	35 dB min.	35 dB min.	53 dB
2) 869 to 894 MHz	38 dB min.	40 dB min.	42 dB
3) 894 to 1700 MHz	35 dB min.	35 dB min.	46 dB
4) 1700 to 2400 MHz	30 dB min.	30 dB min.	41 dB
5) 2400 to 2600 MHz	30 dB min.	30 dB min.	40 dB
6) 2600 to 6000 MHz	25 dB min.	25 dB min.	38 dB
Ripple Deviation (824 to 849MHz)	1.4 dB max.	1.0 dB max.	0.6 dB
VSWR (824 to 849MHz)	1.9 max.	1.9 max.	1.6
Input/Output Impedance (nominal)	50Ω		

SAW FILTER FOR CDMA800/TDMA800/E-AMPS/GSM850(Tx)

Murata part number : SAFEF836MAL0F00

■ Frequency Performance

