

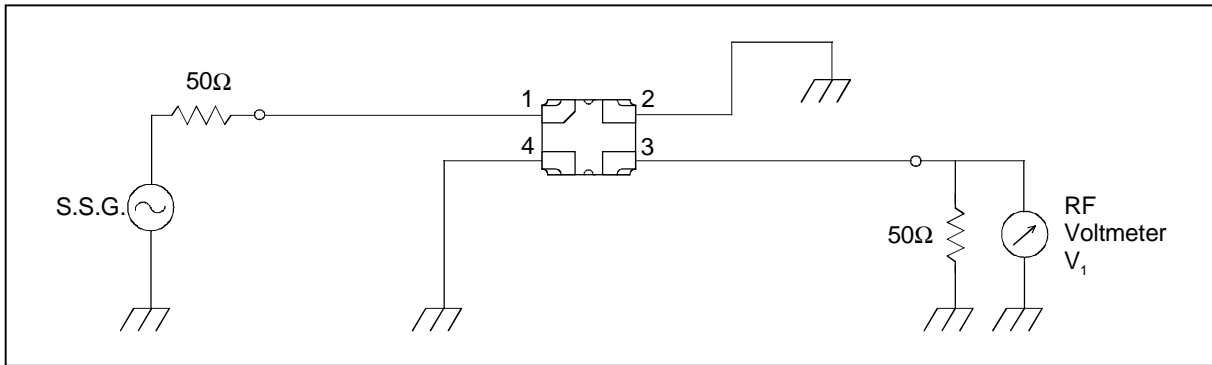
SAW FILTER FOR US-PCS (Tx)

Murata part number : SAFSE1G88KC0T00

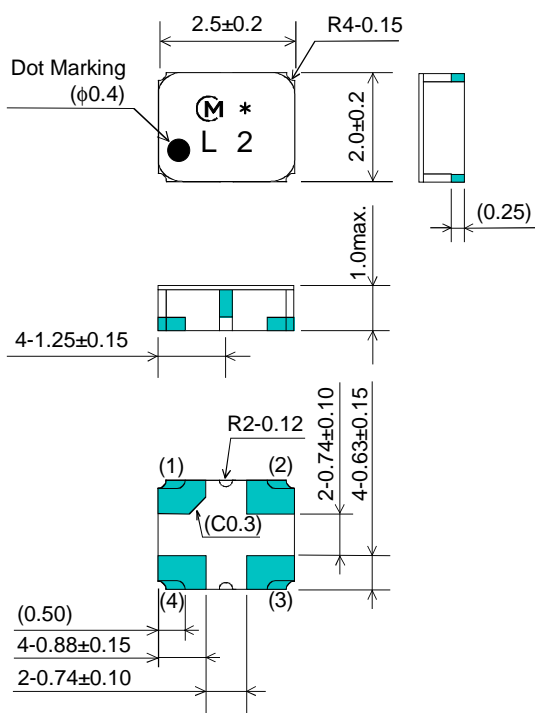
Feature

1. High Attenuation (at 1930 to 1990MHz ; 18 dB min.)
2. Small SMD package (2.5x2.0mm package)

Test Circuit



Package Dimensions



Marking
: Laser Printing

(1) : Input
(3) : Output
Others : Ground

Unit : mm

Specification

Item	Specification	
	-30 to +85°C	typ.
Nominal Center Frequency(f_c)	1880 MHz	
Insertion Loss (1850 to 1910 MHz)	5.0 dB max.	3.5 dB
Absolute Attenuation		
1) 0.1 to 1800 MHz	20 dB min.	28 dB
2) 1930 to 1990 MHz	18 dB min.	27 dB
3) 2100 to 2400 MHz	25 dB min.	39 dB
4) 3700 to 3820 MHz	20 dB min.	25 dB
5) 5550 to 5730 MHz	14 dB min.	18 dB
Ripple Deviation (1850 to 1910 MHz)	3.5 dB max.	2.0 dB
VSWR (1850 to 1910 MHz)	2.2 max.	1.9
Input/Output Impedance (nominal)	50Ω	

SAW FILTER FOR US-PCS (Tx)

Murata part number : SAFSE1G88KC0T00

Frequency Performance

