

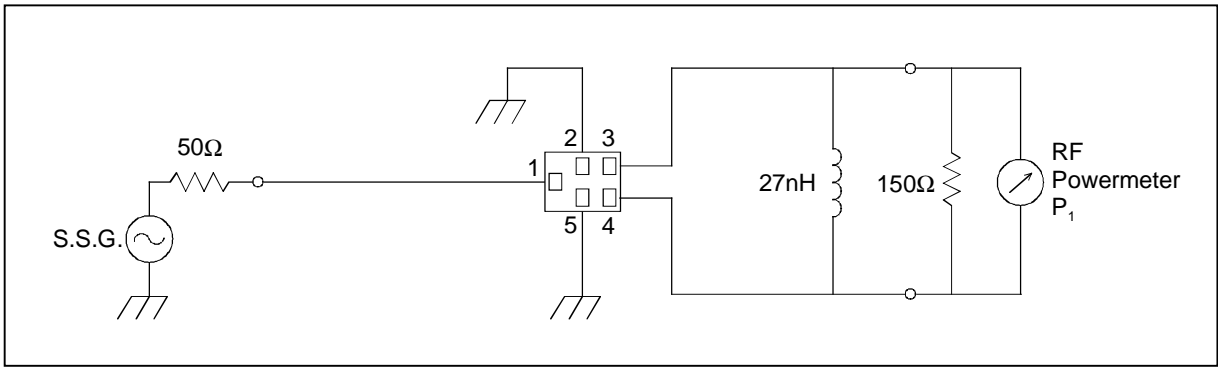
# SAW FILTER FOR GSM1900 (Rx)

Murata part number : SAFEA1G96FA0F00

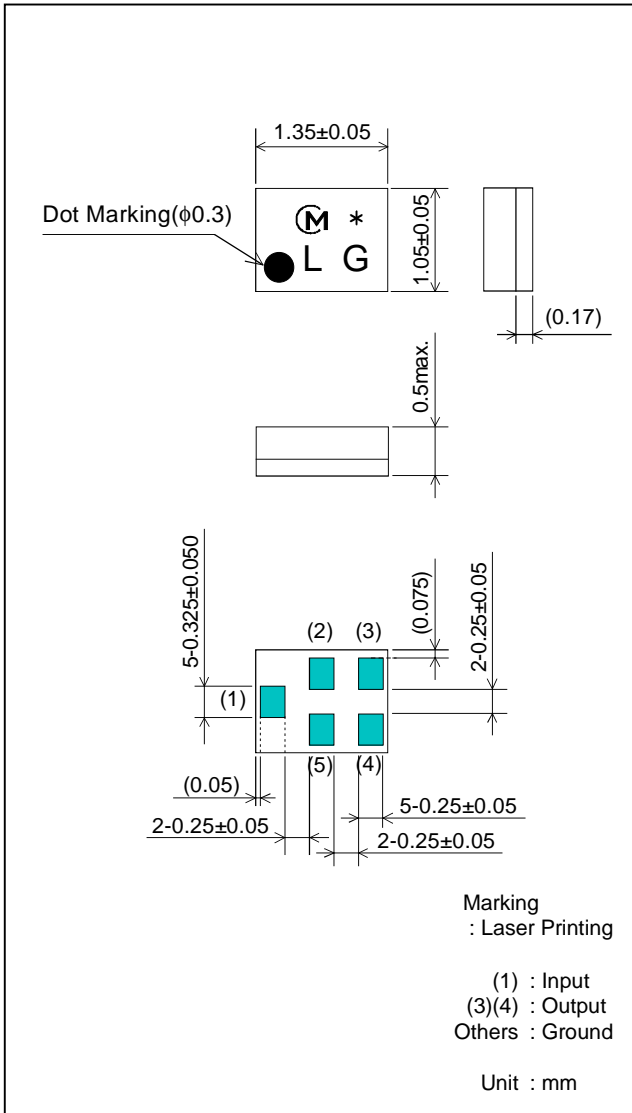
## Feature

1. Low Height (0.5mm(max.))
2. Low Insertion Loss (2.6 dB max.)
3. High Selectivity (at 1830 to 1910 MHz ; 11 dB min.)

## Test Circuit



## Package Dimensions



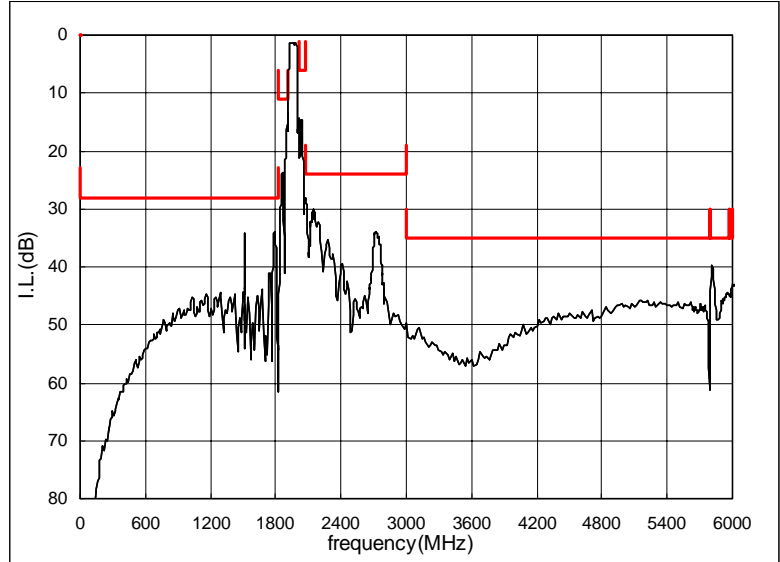
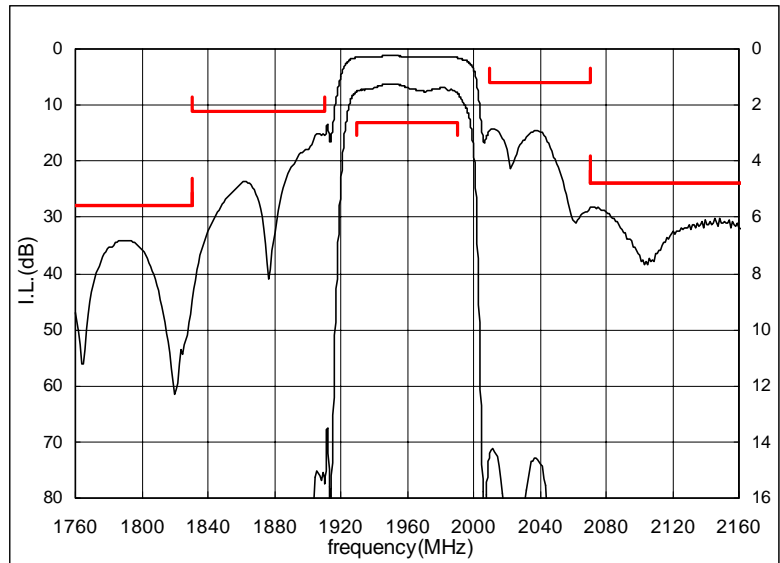
## Specification

Item	Specification		
	-30 to 85°C	25±2°C	typ.
Nominal Center Frequency(fc)	1960MHz		
Insertion Loss (1930 to 1990MHz)	2.6dB max.	2.0dB max.	1.5 dB
Absolute Attenuation			
1) 0.1 to 1830 MHz	28 dB min.	28 dB min.	33 dB
2) 1830 to 1910 MHz	11 dB min.	11 dB min.	15 dB
3) 2010 to 2070 MHz	6 dB min.	12 dB min.	14 dB
4) 2070 to 3000 MHz	24 dB min.	24 dB min.	27 dB
5) 3000 to 5790 MHz	35 dB min.	35 dB min.	46 dB
6) 5790 to 5970 MHz	35 dB min.	35 dB min.	40 dB
7) 5970 to 6000 MHz	35 dB min.	35 dB min.	44 dB
Ripple Deviation (1930 to 1990MHz)	1.7dB max.	0.9dB max.	0.3 dB
VSWR (1930 to 1990MHz)	2.2 max.	1.8 max.	1.6
Amplitude Balance (1930 to 1990MHz)	±1.5dB max.	±1.5dB max.	±1.2dB
Phase Balance (1930 to 1990MHz)	180±12deg. max.	180±9deg. max.	180±5deg.
Input Impedance (nominal)	50Ω		
Output Impedance (nominal)	150Ω//27nH		

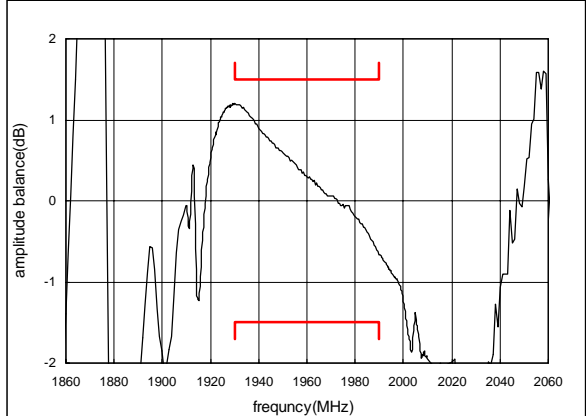
# SAW FILTER FOR GSM1900 (Rx)

Murata part number : SAFEA1G96FA0F00

## Frequency Performance



Amplitude balance



Phase balance

