

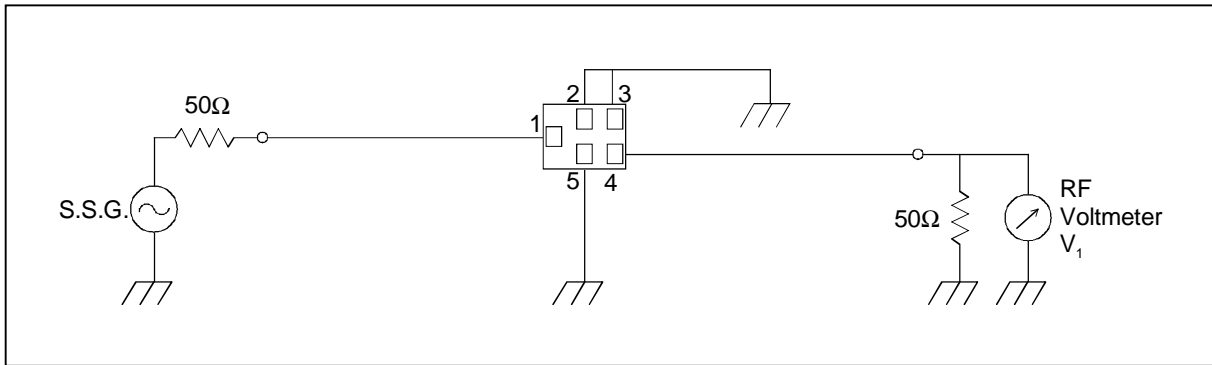
SAW FILTER FOR GSM1800 (Rx)

Murata part number : SAFEB1G84AA0F00

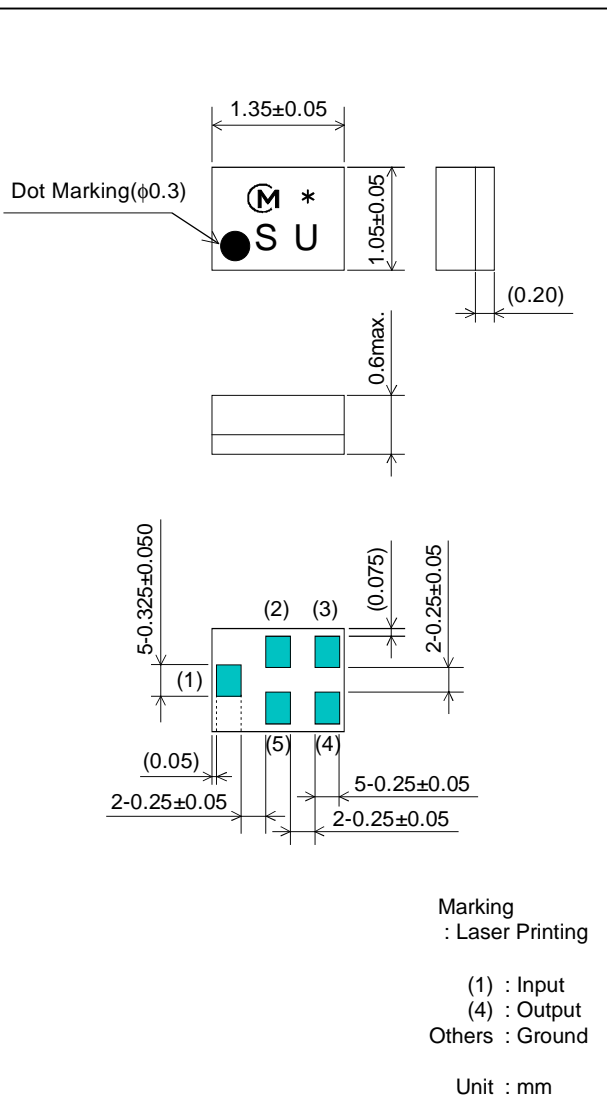
Feature

1. Low Insertion Loss (2.7 dB max.)
2. Ultra Small SMD package (1.35x1.05mm package)

Test Circuit



Package Dimensions



Specification

Item	Specification		
	-25 to 75°C	25±2°C	typ.
Nominal Center Frequency(fc)	1842.5MHz		
Insertion Loss (1805 to 1880MHz)	2.7 dB max.	2.5 dB max.	2.1 dB
Absolute Attenuation			
1) 0.1 to 1410 MHz	29 dB min.	29 dB min.	37 dB
2) 1410 to 1710 MHz	24 dB min.	24 dB min.	33 dB
3) 1710 to 1785 MHz	12 dB min.	14 dB min.	17 dB
4) 1920 to 1980 MHz	13 dB min.	15 dB min.	19 dB
5) 1980 to 2400 MHz	20 dB min.	20 dB min.	26 dB
6) 2400 to 5415 MHz	25 dB min.	25 dB min.	30 dB
7) 5415 to 5640 MHz	25 dB min.	25 dB min.	30 dB
8) 5640 to 6000 MHz	18 dB min.	18 dB min.	35 dB
Ripple Deviation (1805 to 1880MHz)	1.5 dB max.	1.3 dB max.	0.7 dB
VSWR (1805 to 1880MHz)	2.4 max.	2.4 max.	2.0
Input/Output Impedance (nominal)	50Ω		

SAW FILTER FOR GSM1800 (Rx)

Murata part number : SAFEB1G84AA0F00

Frequency Performance

