

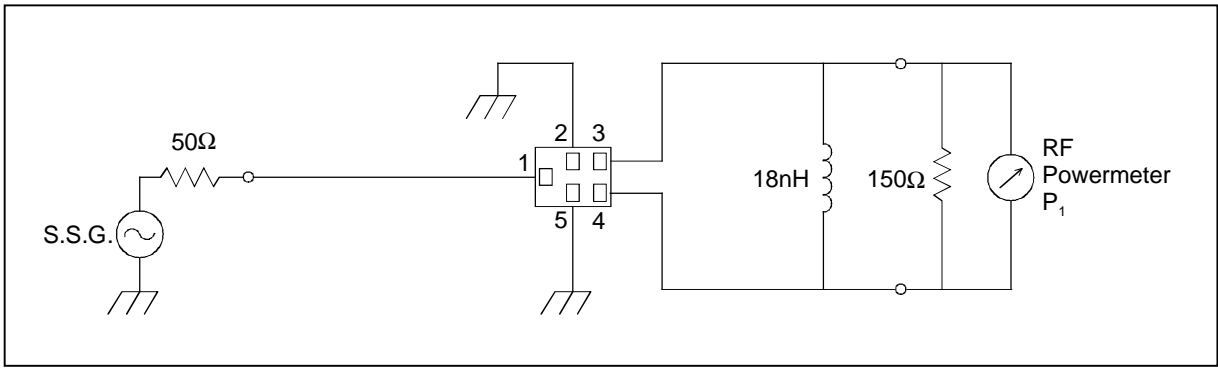
SAW FILTER FOR GSM1800 (Rx)

Murata part number : SAFEB1G84FA0F00

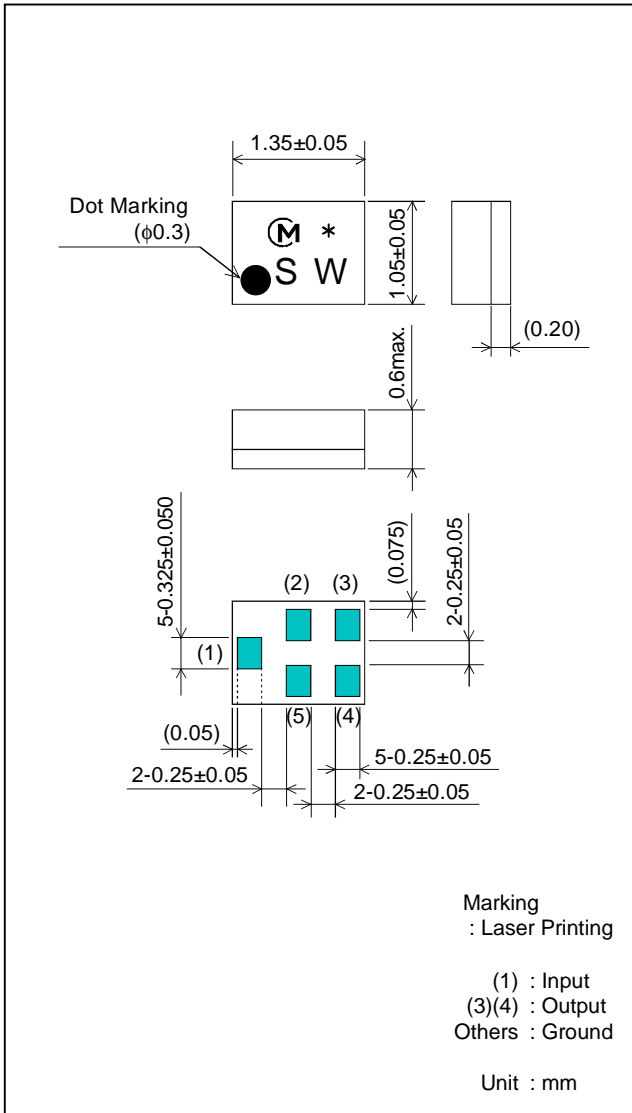
Feature

1. Low Insertion Loss (2.0 dB max.)
2. Ultra Small SMD package (1.35x1.05mm package)
3. Balance type (50Ω//150Ω)

Test Circuit



Package Dimensions



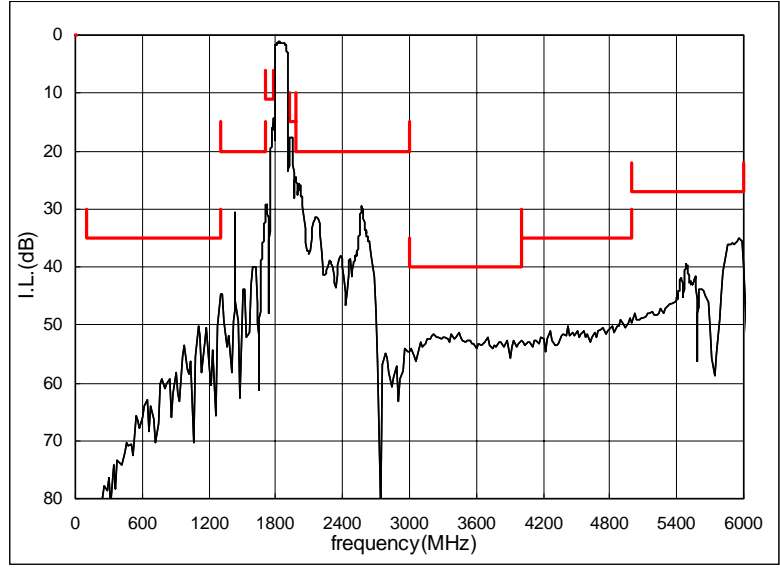
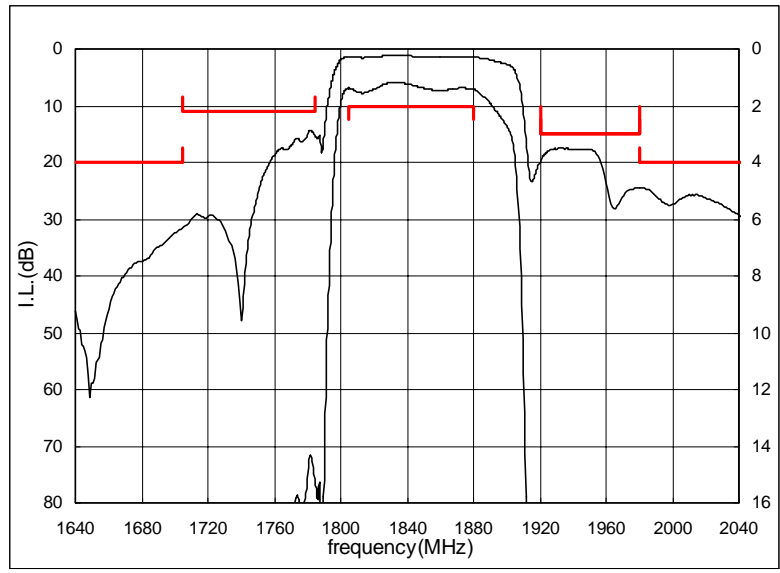
Specification

Item	Specification		
	-10 to 80°C	25±2°C	typ.
Nominal Center Frequency(fc)	1842.5MHz		
Insertion Loss (1805 to 1880MHz)	2.0dB max.	1.8dB max.	1.6 dB
Absolute Attenuation			
1) 100 to 1300 MHz	35 dB min.	35 dB min.	47 dB
2) 1300 to 1705 MHz	20 dB min.	20 dB min.	30 dB
3) 1705 to 1785 MHz	11 dB min.	13 dB min.	14 dB
4) 1920 to 1980 MHz	15 dB min.	15 dB min.	17 dB
5) 1980 to 3000 MHz	20 dB min.	20 dB min.	23 dB
6) 3000 to 4000 MHz	40 dB min.	40 dB min.	51 dB
7) 4000 to 5000 MHz	35 dB min.	35 dB min.	49 dB
8) 5000 to 6000 MHz	27 dB min.	27 dB min.	35 dB
Ripple Deviation (1805 to 1880MHz)	1.0dB max.	1.0dB max.	0.4 dB
VSWR (1805 to 1880MHz)	2.2 max.	2.1 max.	1.8
Amplitude Balance (1805 to 1880MHz)	±1.5dB max.	±1.2dB max.	±0.7dB
Phase Balance (1805 to 1880MHz)	180±12deg. max.	180±10deg. max.	180±2.5deg.
Input Impedance (nominal)	50Ω		
Output Impedance (nominal)	150Ω//18nH		

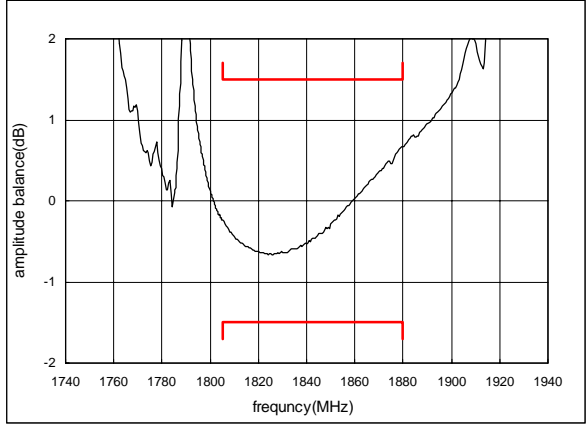
SAW FILTER FOR GSM1800 (Rx)

Murata part number : SAFEB1G84FA0F00

Frequency Performance



Amplitude balance



Phase balance

