

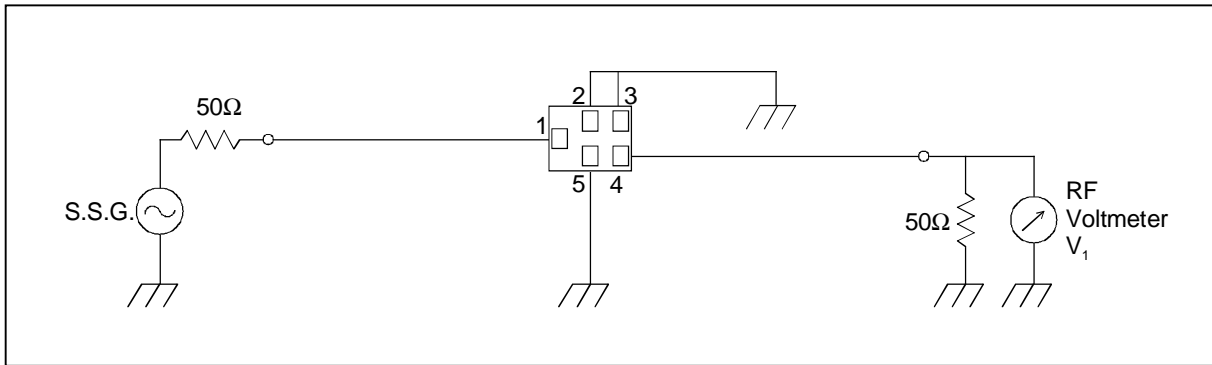
SAW FILTER FOR GSM1900 (Rx)

Murata part number : SAFEB1G96AA0F00

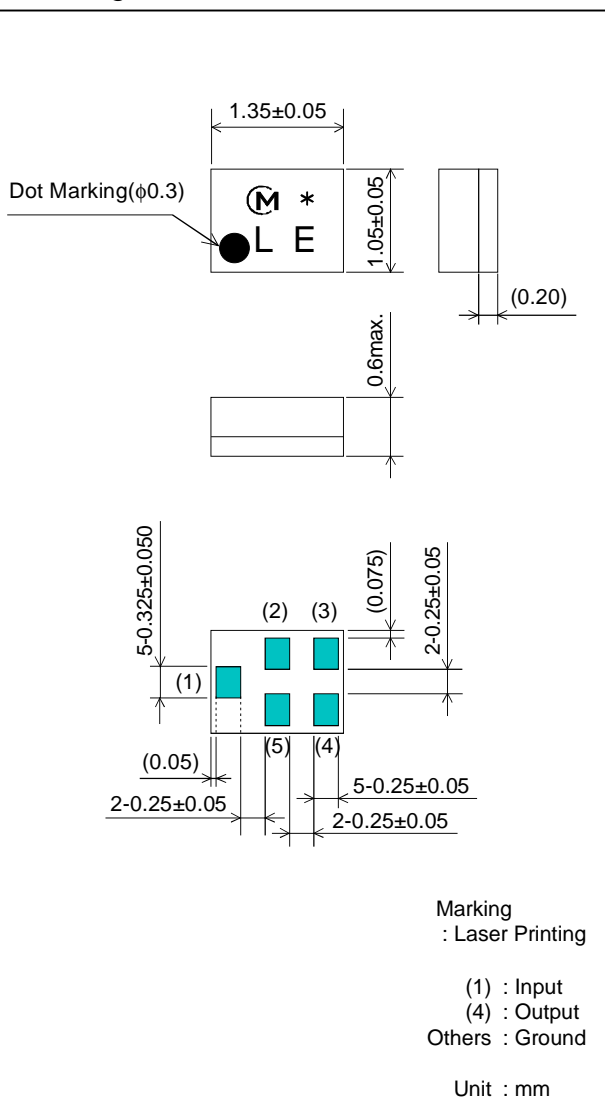
Feature

1. Low Insertion Loss (2.7 dB max.)
2. Ultra Small SMD package (1.35x1.05mm package)

Test Circuit



Package Dimensions



Specification

Item	Specification		
	-25 to 75°C	25±2°C	typ.
Nominal Center Frequency(fc)	1960MHz		
Insertion Loss (1930 to 1990MHz)	2.7 dB max.	2.5 dB max.	1.6 dB
Absolute Attenuation			
1) 0.1 to 1850 MHz	25 dB min.	25 dB min.	29 dB
2) 1850 to 1910 MHz	9 dB min.	12 dB min.	15 dB
3) 2010 to 2070 MHz	9 dB min.	10 dB min.	13 dB
4) 2070 to 2400 MHz	20 dB min.	20 dB min.	26 dB
5) 2400 to 5790 MHz	23 dB min.	23 dB min.	30 dB
6) 5790 to 6000 MHz	25 dB min.	25 dB min.	31 dB
Ripple Deviation (1930 to 1990MHz)	1.6 dB max.	1.4 dB max.	0.7 dB
VSWR (1930 to 1990MHz)	2.4 max.	2.2 max.	1.7
Input/Output Impedance (nominal)	50Ω		

SAW FILTER FOR GSM1900 (Rx)

Murata part number : SAFEB1G96AA0F00

Frequency Performance

