

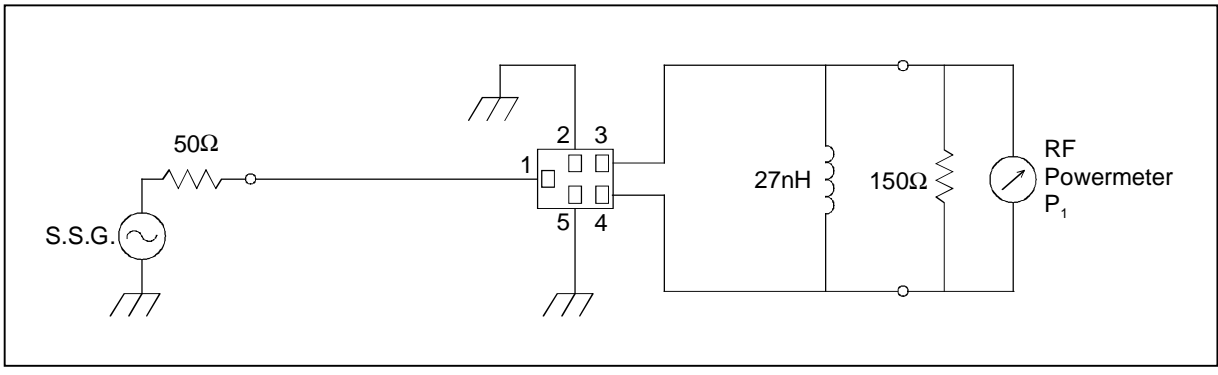
SAW FILTER FOR GSM1900 (Rx)

Murata part number : SAFEB1G96FA0F00

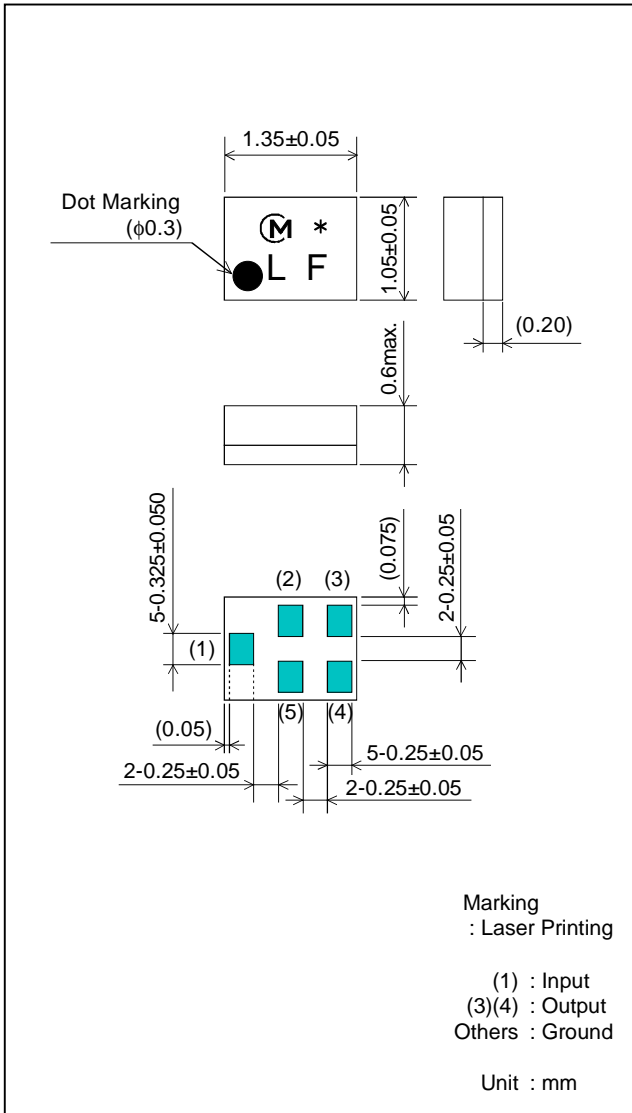
Feature

1. Low Insertion Loss (2.5 dB max.)
2. Ultra Small SMD package (1.35x1.05mm package)
3. Balance type (50Ω//150Ω)

Test Circuit



Package Dimensions



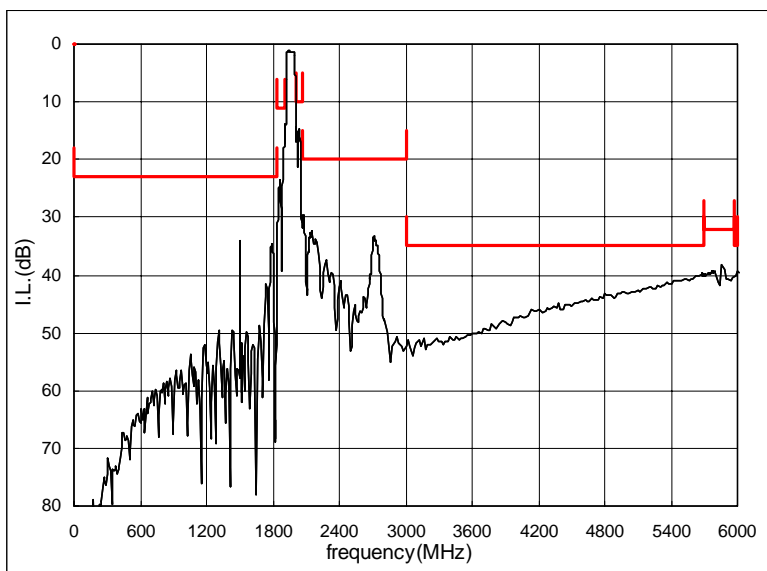
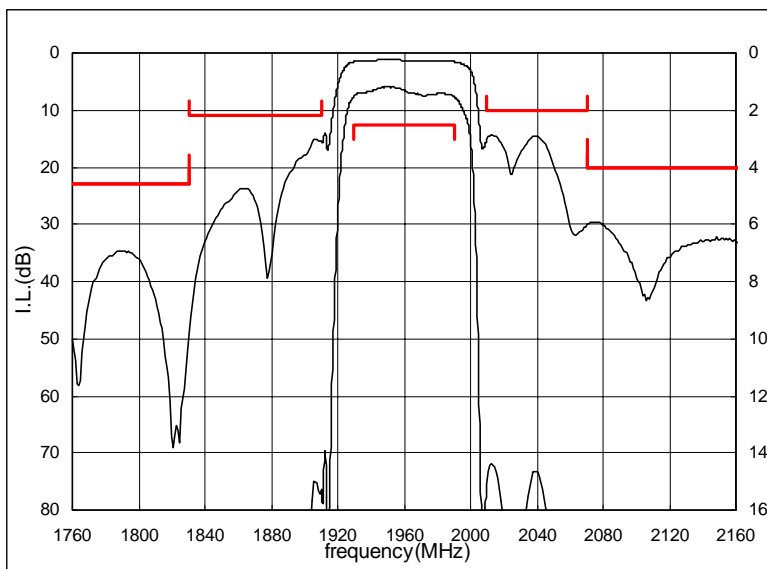
Specification

Item	Specification		
	-10 to 80°C	25±2°C	typ.
Nominal Center Frequency(fc)	1960MHz		
Insertion Loss (1930 to 1990MHz)	2.5dB max.	2.0dB max.	1.5 dB
Absolute Attenuation			
1) 0.1 to 1830 MHz	23 dB min.	23 dB min.	33 dB
2) 1830 to 1910 MHz	11 dB min.	11 dB min.	15 dB
3) 2010 to 2070 MHz	10 dB min.	12 dB min.	14 dB
4) 2070 to 3000 MHz	20 dB min.	20 dB min.	29 dB
5) 3000 to 5700 MHz	35 dB min.	35 dB min.	36 dB
6) 5700 to 5970 MHz	32 dB min.	32 dB min.	35 dB
7) 5970 to 6000 MHz	35 dB min.	35 dB min.	37 dB
Ripple Deviation (1930 to 1990MHz)	1.6dB max.	1.0dB max.	0.4 dB
VSWR (1930 to 1990MHz)	2.0 max.	1.8 max.	1.6
Amplitude Balance (1930 to 1990MHz)	±2.0dB max.	±1.8dB max.	±1.2dB
Phase Balance (1930 to 1990MHz)	180±12deg. max.	180±9deg. max.	180±4deg.
Input Impedance (nominal)	50Ω		
Output Impedance (nominal)	150Ω//27nH		

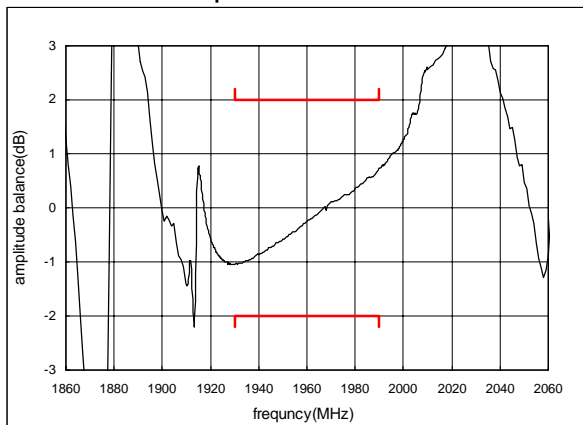
SAW FILTER FOR GSM1900 (Rx)

Murata part number : SAFEB1G96FA0F00

Frequency Performance



Amplitude balance



Phase balance

