

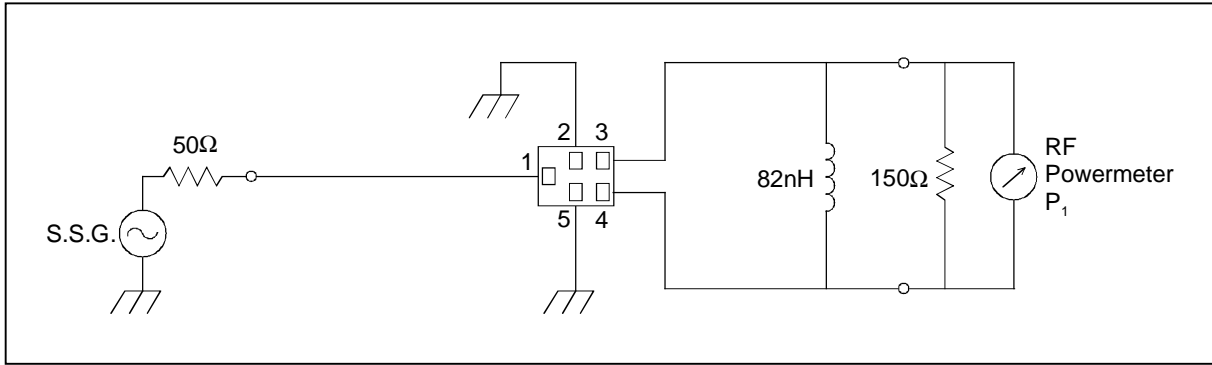
SAW FILTER FOR GSM850 (Rx)

Murata part number : SAFEB881MFL0F00

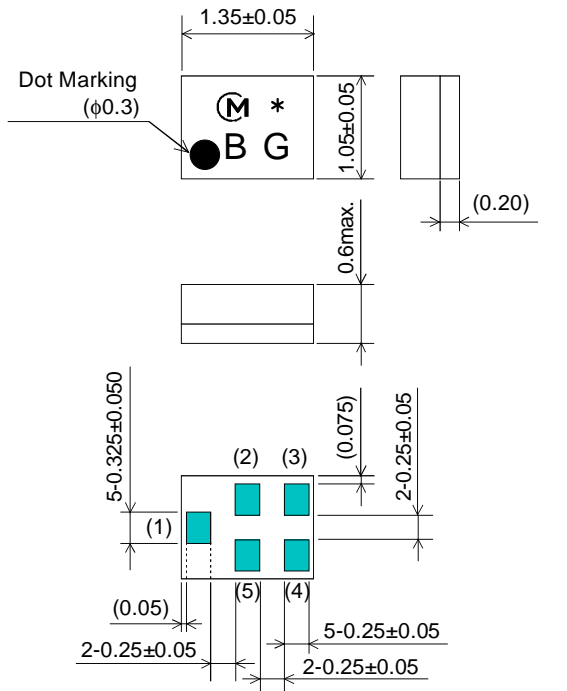
Feature

1. Low Insertion Loss (2.0 dB max.)
2. Ultra Small SMD package (1.35x1.05mm package)
3. Balance type (50Ω/150Ω)

Test Circuit



Package Dimensions



Marking
: Laser Printing

(1) : Input
(3)(4) : Output
Others : Ground

Unit : mm

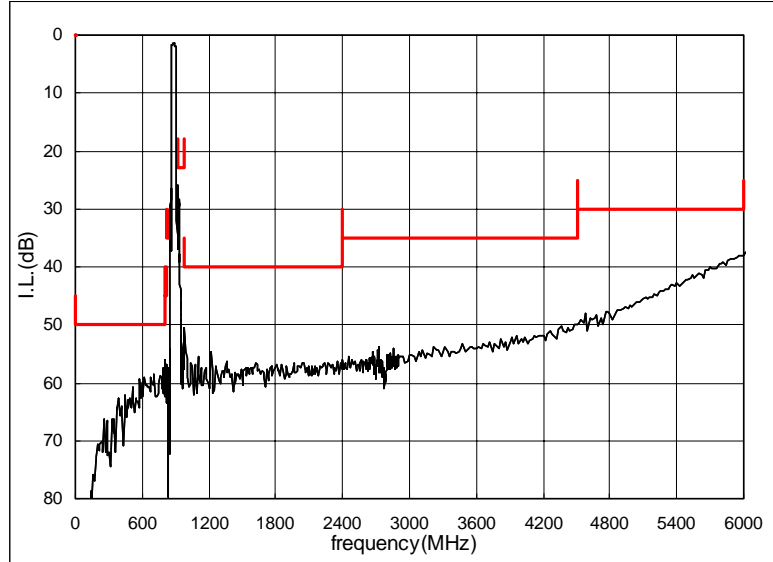
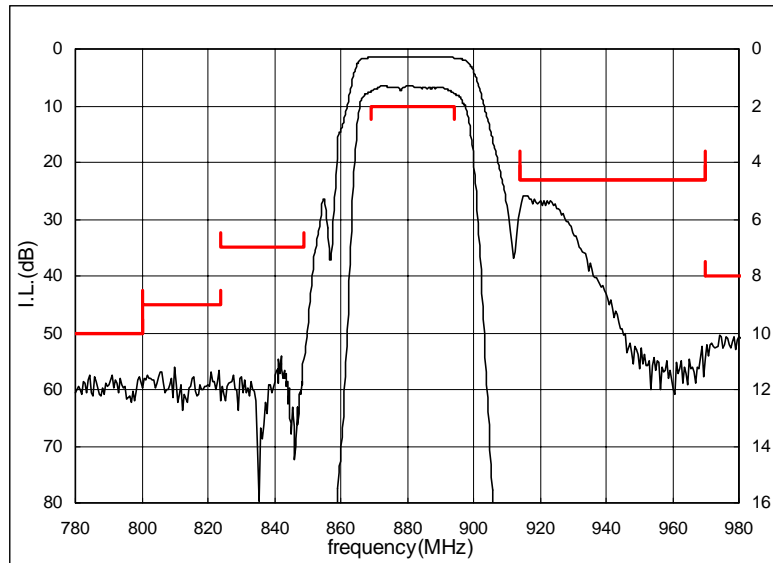
Specification

Item	Specification		
	-10 to 80°C	25±2°C	typ.
Nominal Center Frequency(fc)	881.5MHz		
Insertion Loss (869 to 894MHz)	2.0dB max.	1.9dB max.	1.6 dB
Absolute Attenuation			
1) 0.1 to 800 MHz	50 dB min.	50 dB min.	57 dB
2) 800 to 824 MHz	45 dB min.	45 dB min.	55 dB
3) 824 to 849 MHz	35 dB min.	38 dB min.	54 dB
4) 914 to 970 MHz	23 dB min.	23 dB min.	25 dB
5) 970 to 2400 MHz	40 dB min.	40 dB min.	49 dB
6) 2400 to 4500 MHz	35 dB min.	35 dB min.	50 dB
7) 4500 to 6000 MHz	30 dB min.	30 dB min.	36 dB
Ripple Deviation (869 to 894MHz)	0.9dB max.	0.7dB max.	0.3 dB
VSWR (869 to 894MHz)	1.7 max.	1.6 max.	1.3
Amplitude Balance (869 to 894MHz)	±1.0dB max.	±0.5dB max.	±0.2dB
Phase Balance (869 to 894MHz)	180±10deg. max.	180±8deg. max.	180±2.0deg.
Input Impedance (nominal)	50Ω		
Output Impedance (nominal)	150Ω/82nH		

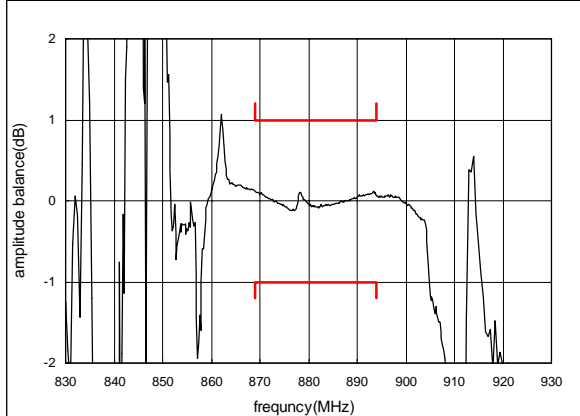
SAW FILTER FOR GSM850 (Rx)

Murata part number : SAFEB881MFL0F00

Frequency Performance



Amplitude balance



Phase balance

