

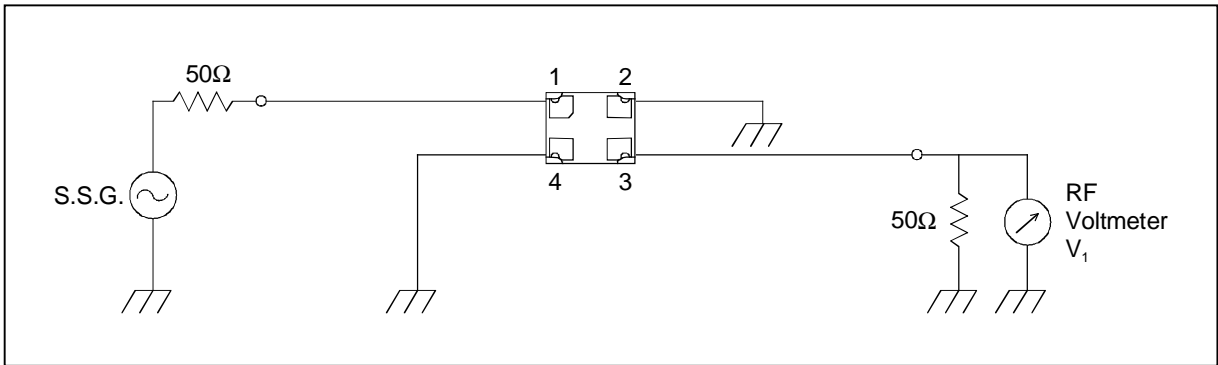
SAW FILTER FOR GSM1800 (Rx)

Murata part number : SAFEF1G84AA0F00

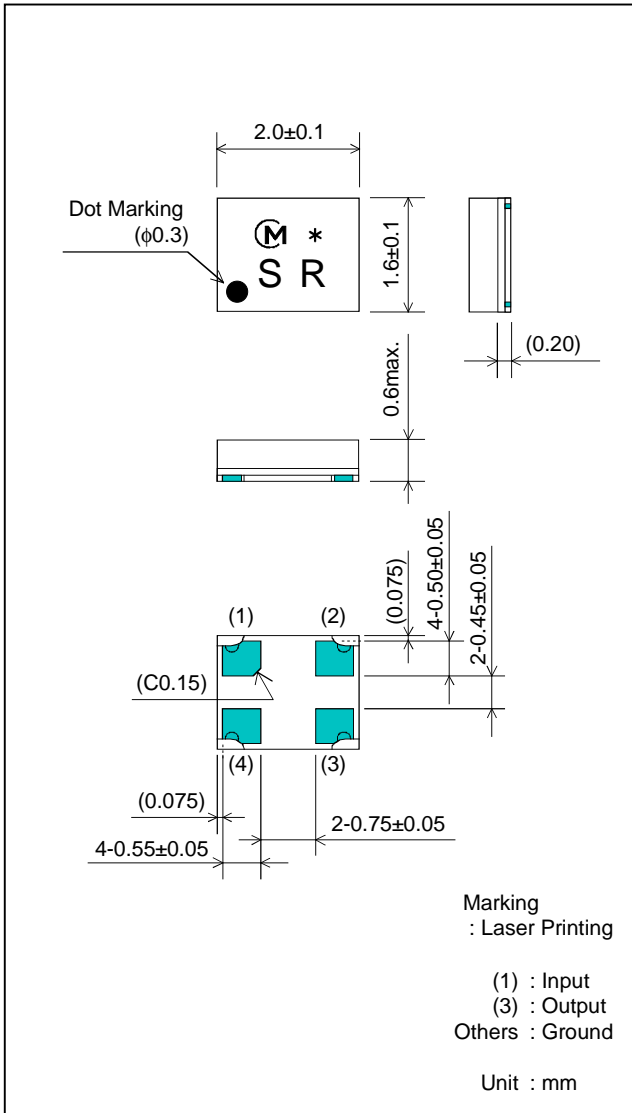
Feature

1. Low Insertion Loss (2.8 dB max.)
2. Ultra Small SMD package (2.0x1.6mm package)

Test Circuit



Package Dimensions



Specification

Item	Specification	
	-30 to +85°C	typ.
Nominal Center Frequency(f_c)	1842.5 MHz	
Insertion Loss (1805 to 1880 MHz)	2.8 dB max.	2.1 dB
Absolute Attenuation		
1) 0.1 to 1500 MHz	30 dB min.	37 dB
2) 1500 to 1710 MHz	24 dB min.	32 dB
3) 1710 to 1785 MHz	10 dB min.	17 dB
4) 1920 to 1980 MHz	15 dB min.	19 dB
5) 1980 to 2160 MHz	20 dB min.	25 dB
6) 2160 to 2350 MHz	29 dB min.	34 dB
7) 2350 to 3800 MHz	25 dB min.	30 dB
8) 3800 to 5000 MHz	22 dB min.	25 dB
9) 5000 to 6000 MHz	20 dB min.	24 dB
Ripple Deviation (1805 to 1880 MHz)	1.7 dB max.	0.7 dB
VSWR (1805 to 1880 MHz)	2.2 max.	1.8
Input/Output Impedance (nominal)	50Ω	

SAW FILTER FOR GSM1800 (Rx)

Murata part number : SAFEF1G84AA0F00

Frequency Performance

