

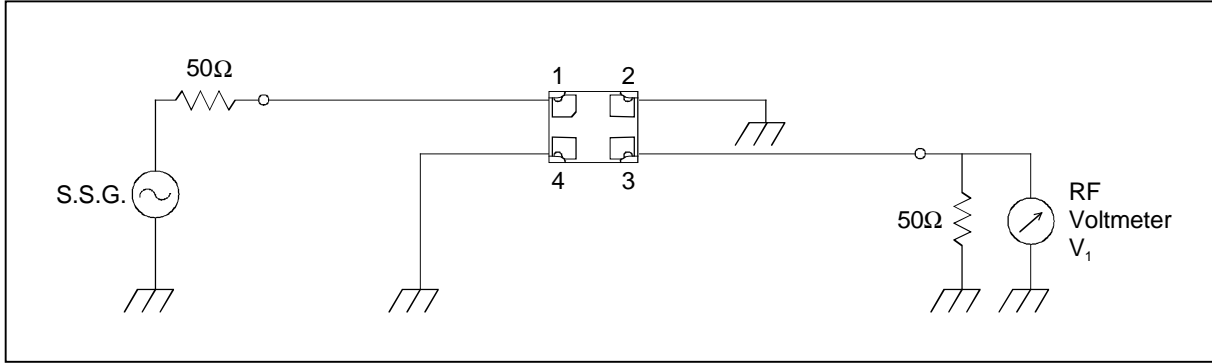
# SAW FILTER FOR GSM850 (Rx)

Murata part number : SAFEF881MAL0F00

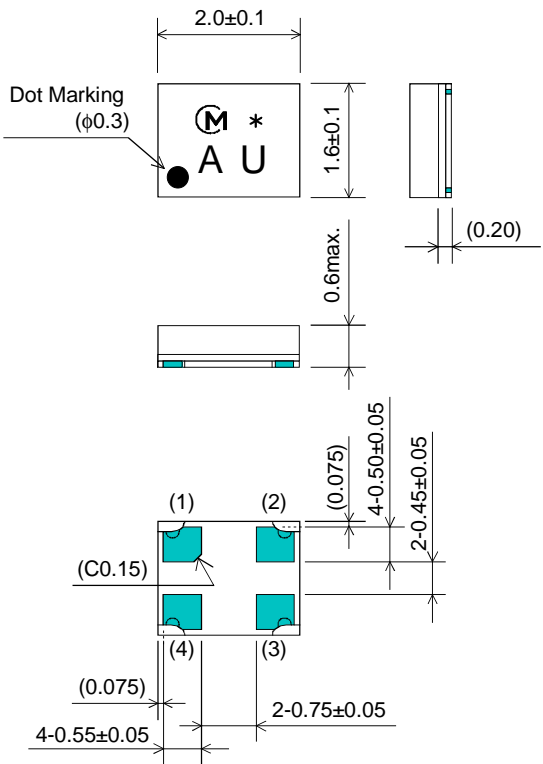
## Feature

1. Low Insertion Loss (2.6 dB max.)
2. Ultra Small SMD package (2.0x1.6mm package)

## Test Circuit



## Package Dimensions



Marking  
: Laser Printing

(1) : Input  
(3) : Output  
Others : Ground

Unit : mm

## Specification

Item	Specification	
	-30 to +85°C	typ.
Nominal Center Frequency( $f_c$ )	881.5 MHz	
Insertion Loss (869 to 894 MHz)	2.6 dB max.	2.0 dB
Absolute Attenuation		
1) 0.1 to 824 MHz	45 dB min.	53 dB
2) 824 to 849 MHz	45 dB min.	50 dB
3) 914 to 960 MHz	21 dB min.	28 dB
4) 960 to 3129 MHz	30 dB min.	36 dB
5) 3129 to 6000 MHz	25 dB min.	32 dB
Ripple Deviation (869 to 894 MHz)	1.4 dB max.	0.4 dB
VSWR (869 to 894 MHz)	1.7 max.	1.5
Input/Output Impedance (nominal)	50Ω	

# SAW FILTER FOR GSM850 (Rx)

Murata part number : SAFEF881MAL0F00

## Frequency Performance

