

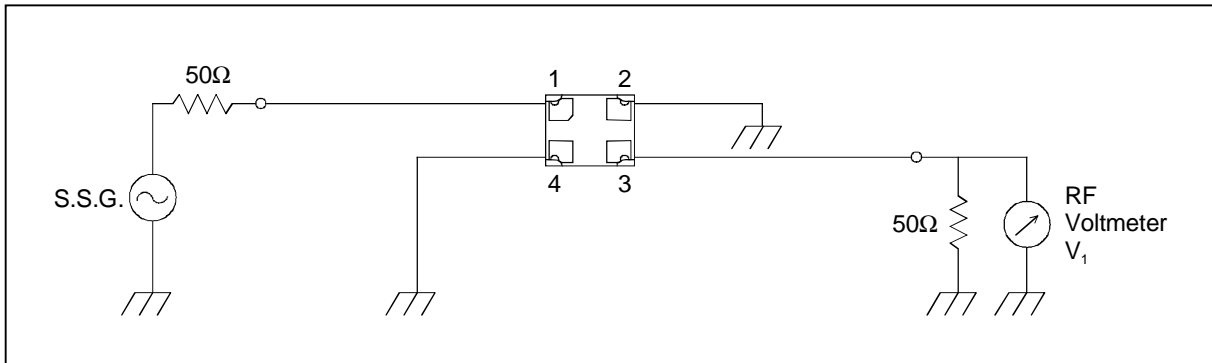
# SAW FILTER FOR GSM900 (Tx)

Murata part number : SAFEF897MAL0F00

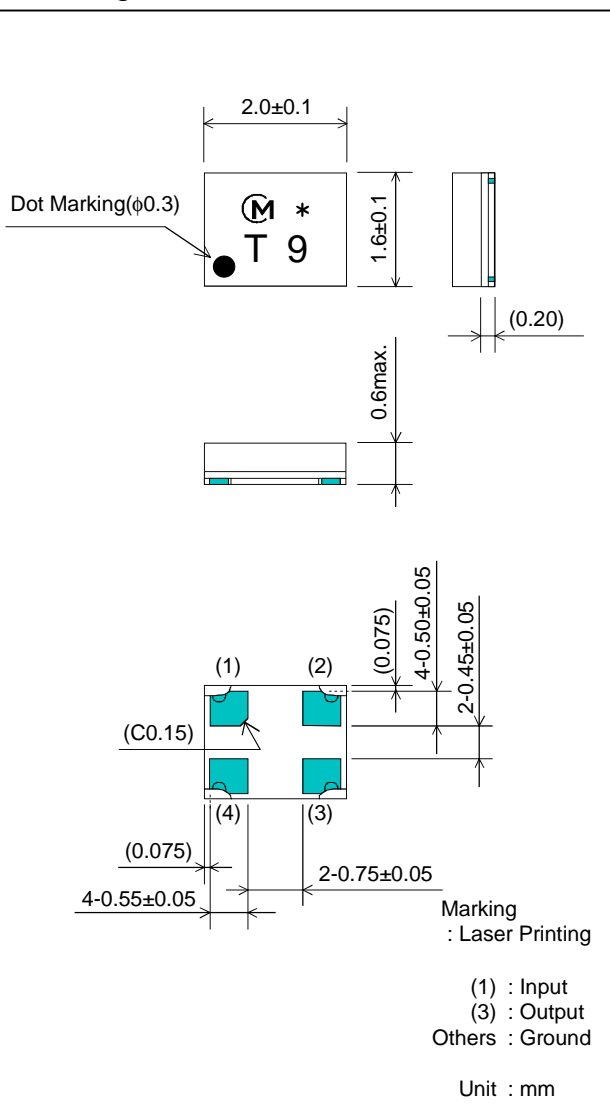
## Feature

1. Low Insertion Loss (2.8dB max.)
2. Ultra Small SMD package (2.0x1.6mm package)

## Test Circuit



## Package Dimensions



## Specification

Item	Specification		
	-30 to 85°C	25±2°C	typ.
Nominal Center Frequency(fc)	897.5MHz		
Insertion Loss (880 to 915MHz)	2.8 dB max.	2.5 dB max.	2.0 dB
Absolute Attenuation			
1) 0.1 to 860 MHz	35 dB min.	35 dB min.	47 dB
2) 860 to 870 MHz	25 dB min.	25 dB min.	31 dB
3) 925 to 935 MHz	7 dB min.	10 dB min.	12 dB
4) 935 to 960 MHz	25 dB min.	25 dB min.	32 dB
5) 1760 to 1830 MHz	35 dB min.	35 dB min.	46 dB
6) 2640 to 2745 MHz	30 dB min.	30 dB min.	39 dB
Ripple Deviation (880 to 915MHz)	1.8 dB max.	1.5 dB max.	0.7 dB
VSWR (880 to 915MHz)	2.3 max.	2.2 max.	2.0
Input/Output Impedance (nominal)	50Ω		

# SAW FILTER FOR GSM900 (Tx)

Murata part number : SAFEF897MAL0F00

## Frequency Performance

