

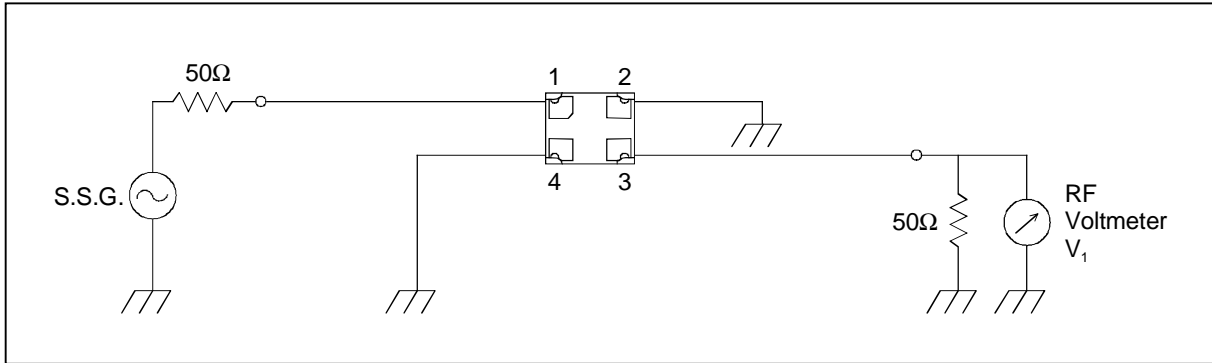
# SAW FILTER FOR GSM900 (Rx)

Murata part number : SAFEF942MAL0F00

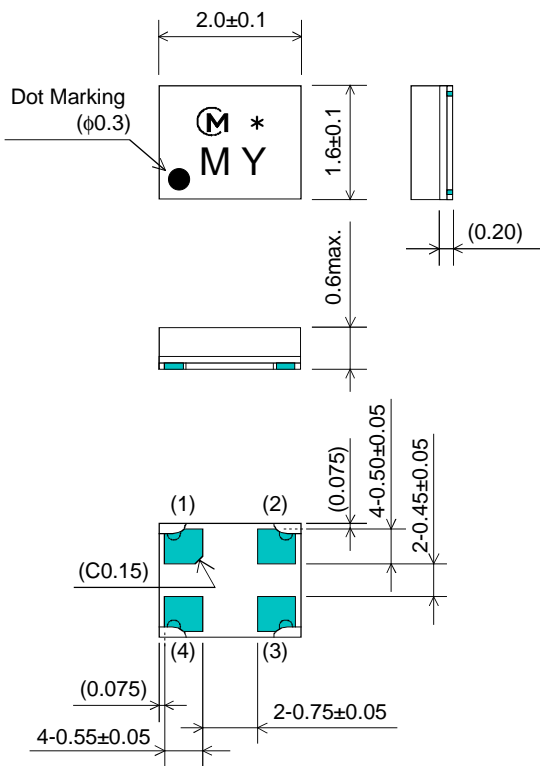
## Feature

1. Low Insertion Loss (3.0 dB max.)
2. Ultra Small SMD package (2.0x1.6mm package)

## Test Circuit



## Package Dimensions



Marking  
: Laser Printing

(1) : Input  
(3) : Output  
Others : Ground

Unit : mm

## Specification

Item	Specification	
	-30 to +85°C	typ.
Nominal Center Frequency( $f_c$ )	942.5 MHz	
Insertion Loss (925 to 960 MHz)	3.0 dB max.	1.9 dB
Absolute Attenuation		
1) 0.1 to 880 MHz	45 dB min.	50 dB
2) 880 to 905 MHz	23 dB min.	42 dB
3) 905 to 915 MHz	20 dB min.	30 dB
4) 980 to 1020 MHz	24 dB min.	32 dB
5) 1020 to 3360 MHz	27 dB min.	37 dB
6) 3360 to 6000 MHz	20 dB min.	35 dB
Ripple Deviation (925 to 960 MHz)	1.7 dB max.	0.6 dB
VSWR (925 to 960 MHz)	2.1 max.	1.8
Input/Output Impedance (nominal)	50Ω	

# SAW FILTER FOR GSM900 (Rx)

Murata part number : SAFEF942MAL0F00

## Frequency Performance

