

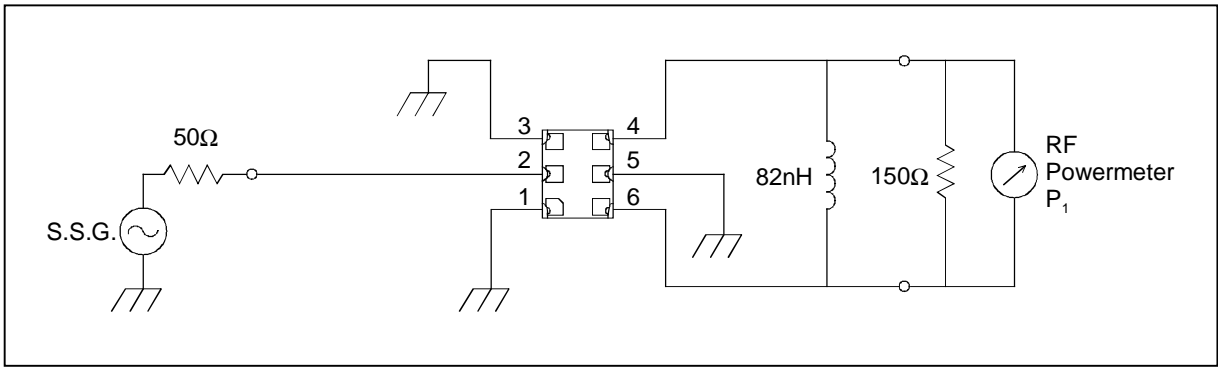
# SAW FILTER FOR GSM850 (Rx)

Murata part number : SAFEH881MFM0F00

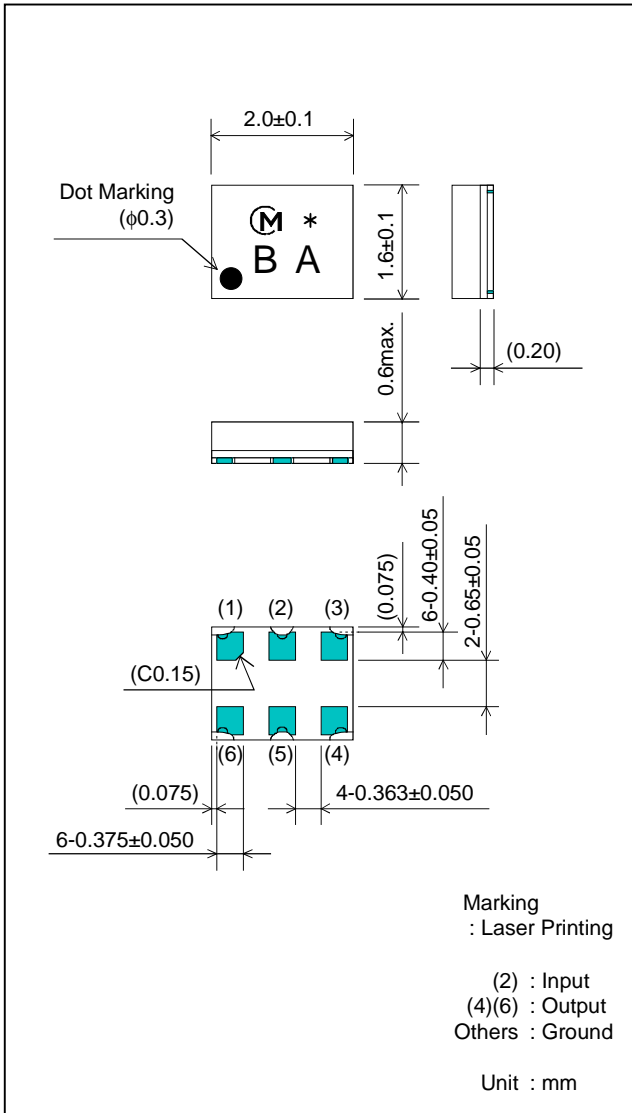
## Feature

1. Ultra Small SMD package (2.0x1.6mm package)
2. Low Insertion Loss (2.0 dB max.)
3. Balance type (50Ω/150Ω)

## Test Circuit



## Package Dimensions



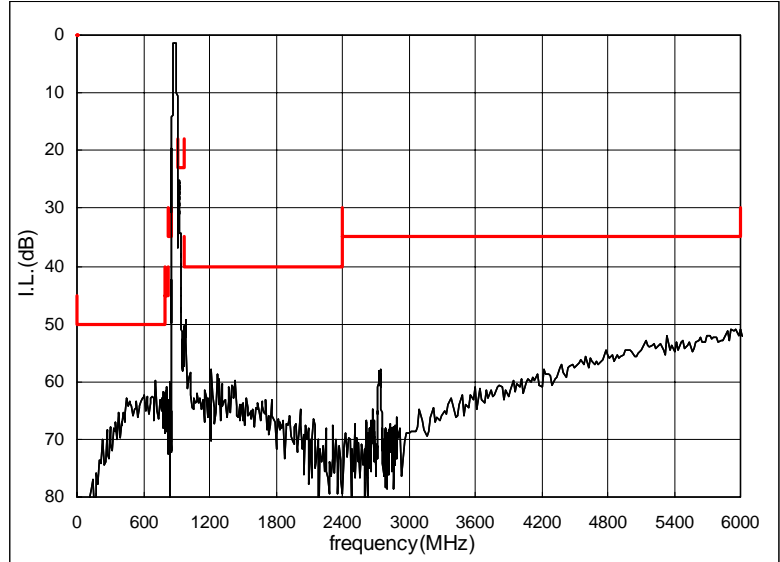
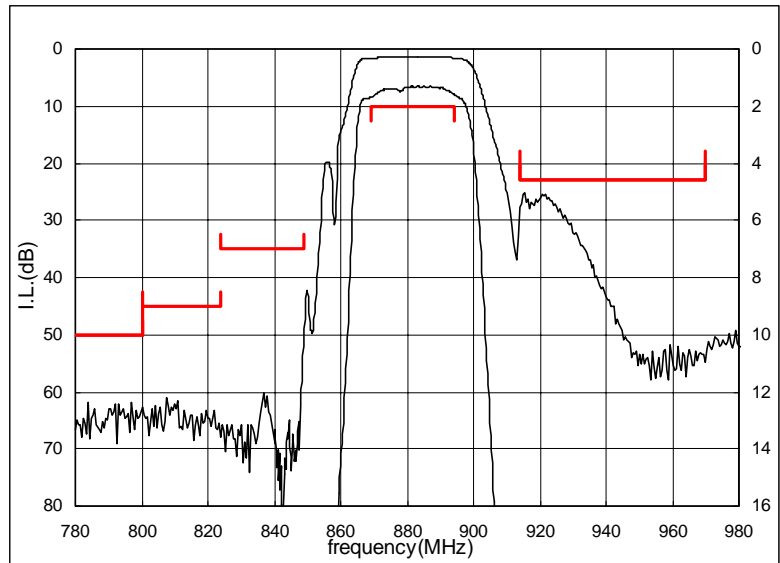
## Specification

Item	Specification		
	-10 to 80°C	25±2°C	typ.
Nominal Center Frequency(fc)	881.5MHz		
Insertion Loss (869 to 894MHz)	2.0dB max.	1.9dB max.	1.7 dB
Absolute Attenuation			
1) 0 to 800 MHz	50 dB min.	50 dB min.	60 dB
2) 800 to 824 MHz	45 dB min.	45 dB min.	61 dB
3) 824 to 849 MHz	35 dB min.	38 dB min.	49 dB
4) 914 to 970 MHz	23 dB min.	23 dB min.	26 dB
5) 970 to 2400 MHz	40 dB min.	40 dB min.	50 dB
6) 2400 to 6000 MHz	35 dB min.	35 dB min.	50 dB
Ripple Deviation (869 to 894MHz)	1.0dB max.	1.0dB max.	0.4 dB
VSWR (869 to 894MHz)	1.8 max.	1.7 max.	1.4
Amplitude Balance (869 to 894MHz)	±1.0dB max.	±0.5dB max.	±0.1dB
Phase Balance (869 to 894MHz)	180±10deg. max.	180±8deg. max.	180±2deg.
Input Impedance (nominal)	50Ω		
Output Impedance (nominal)	150Ω//82nH		

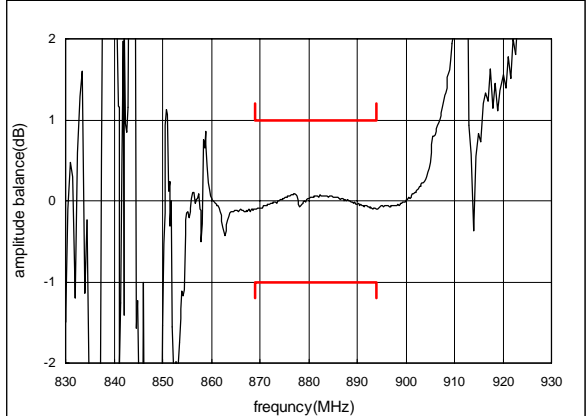
# SAW FILTER FOR GSM850 (Rx)

Murata part number : SAFEH881MFM0F00

## Frequency Performance



Amplitude balance



Phase balance

