

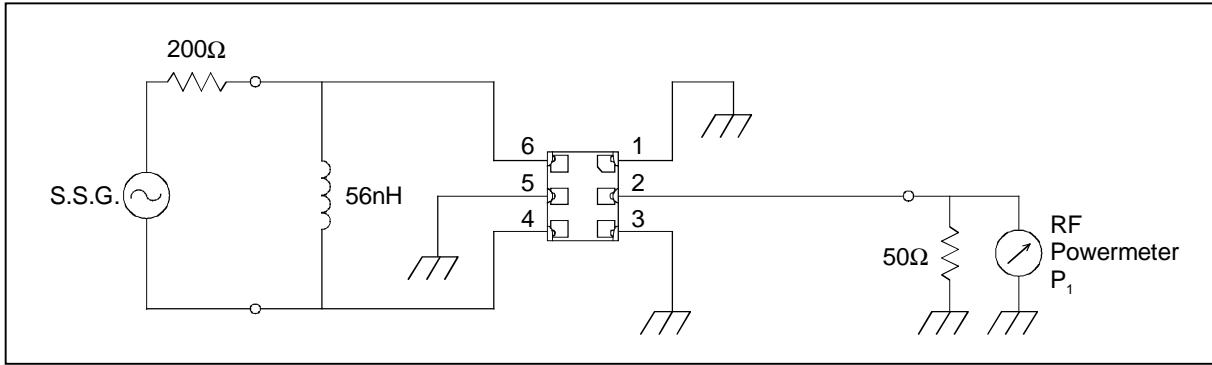
SAW FILTER FOR GSM900 (Tx)

Murata part number : *SAFEH897MFN0F00*

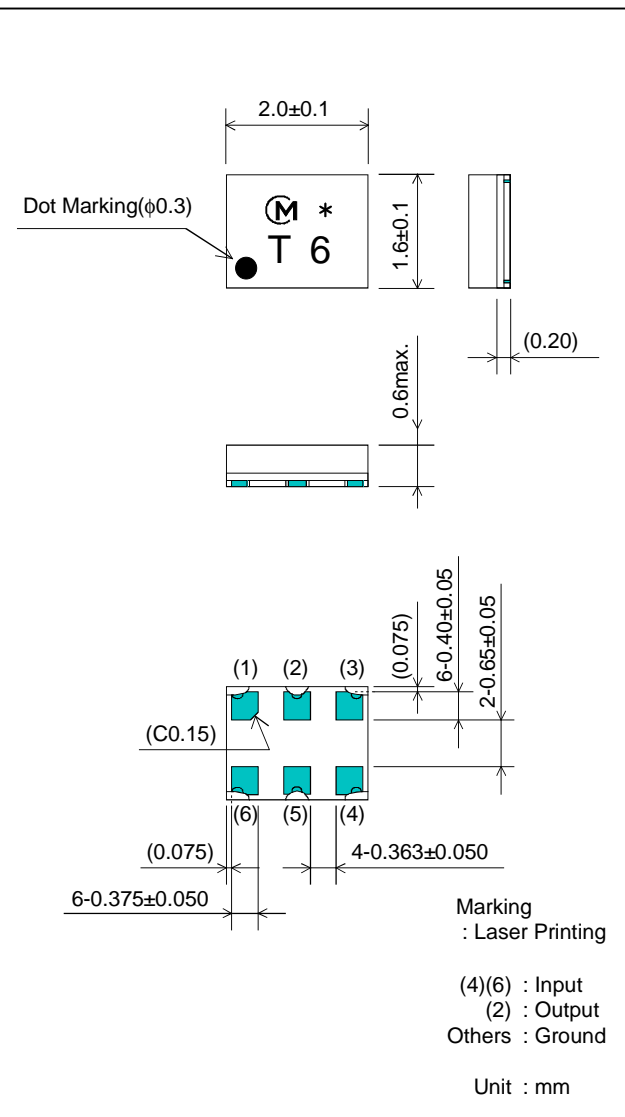
Feature

1. Low Insertion Loss (3.4 dB max.)
2. Ultra Small SMD package (2.0x1.6mm package)
3. Balance type (200Ω//50Ω)

Test Circuit



Package Dimensions



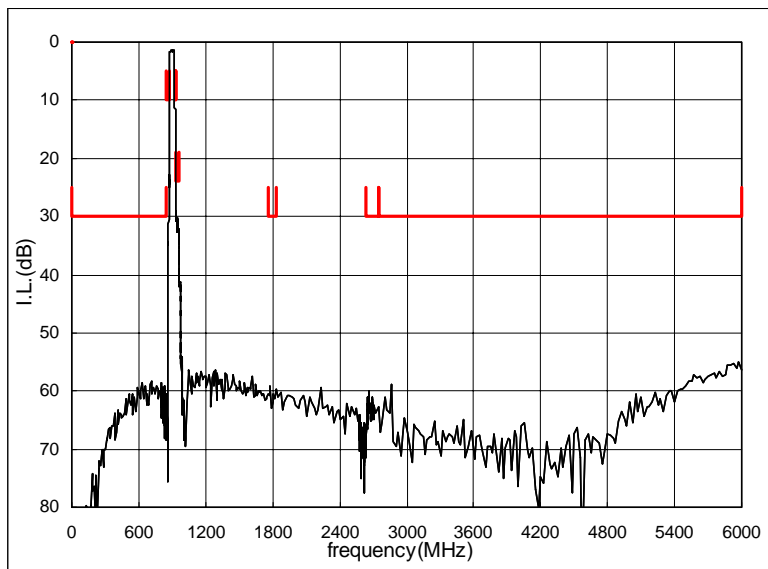
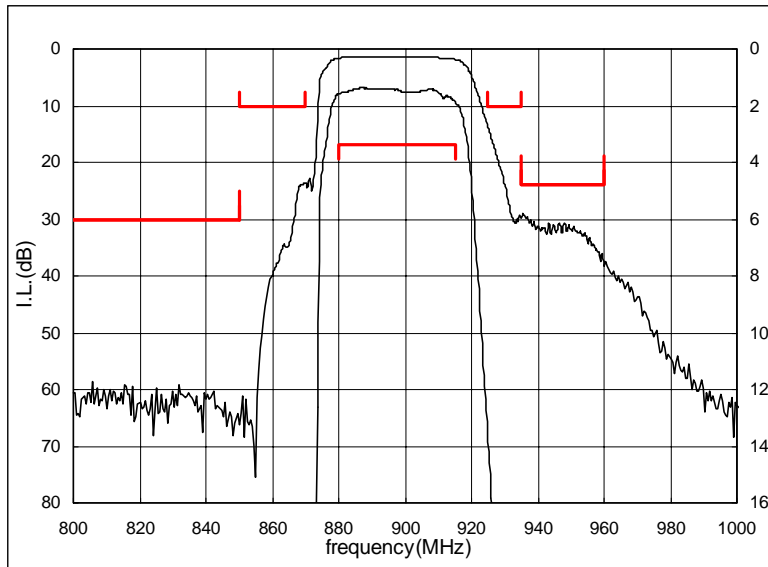
Specification

Item	Specification		
	-20 to 70°C	25±2°C	typ.
Nominal Center Frequency(fc)	897.5MHz		
Insertion Loss (880 to 915MHz)	3.4dB max.	3.0dB max.	1.9 dB
Absolute Attenuation			
1) 0.1 to 850 MHz	30 dB min.	30 dB min.	58 dB
2) 850 to 870 MHz	10 dB min.	10 dB min.	24 dB
3) 925 to 935 MHz	10 dB min.	10 dB min.	15 dB
4) 935 to 960 MHz	24 dB min.	25 dB min.	29 dB
5) 1760 to 1830 MHz	30 dB min.	30 dB min.	61 dB
6) 2640 to 2745 MHz	30 dB min.	30 dB min.	61 dB
7) 2745 to 6000 MHz	30 dB min.	30 dB min.	57 dB
Ripple Deviation (880 to 915MHz)	2.0dB max.	1.6dB max.	0.6 dB
VSWR (880 to 915MHz)	2.3 max.	2.2 max.	1.5
Group Delay Time Deviation (880 to 915MHz)	70ns max.	70ns max.	24ns
Amplitude Balance (880 to 915MHz)	±1.0dB max.	±0.8dB max.	±0.3dB
Phase Balance (880 to 915MHz)	180±8deg. max.	180±7deg. max.	180±2deg.
Input Impedance (nominal)	50Ω		
Output Impedance (nominal)	200Ω//56nH		

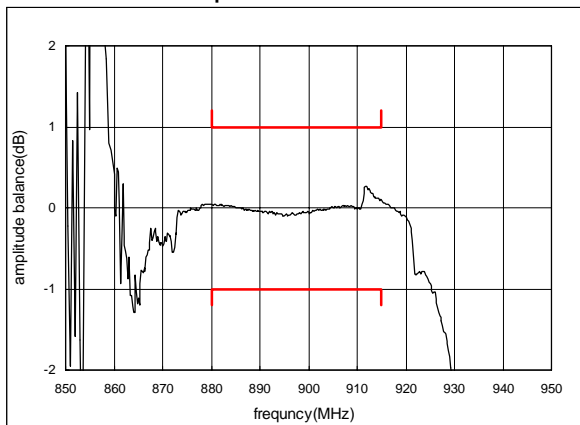
SAW FILTER FOR GSM900 (Tx)

Murata part number : SAFEH897MFN0F00

Frequency Performance



Amplitude balance



Phase balance

