

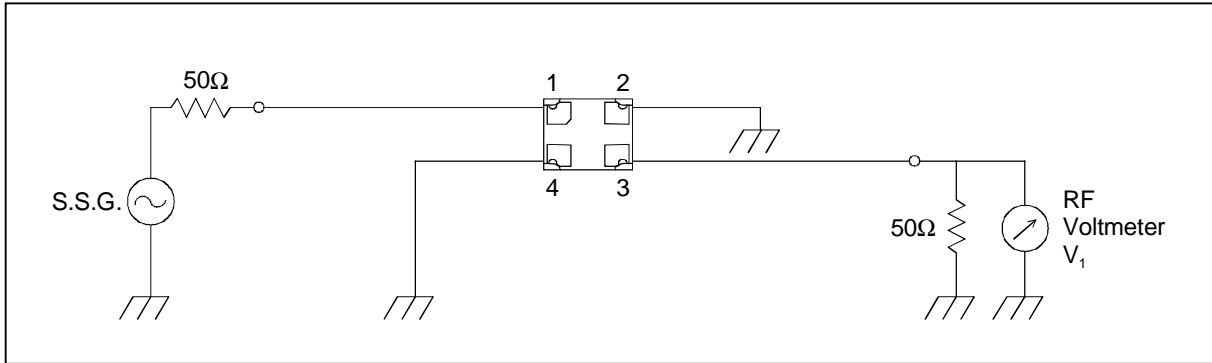
SAW FILTER FOR J-CDMA (Rx)

Murata part number : SAFEF851MKC0F00

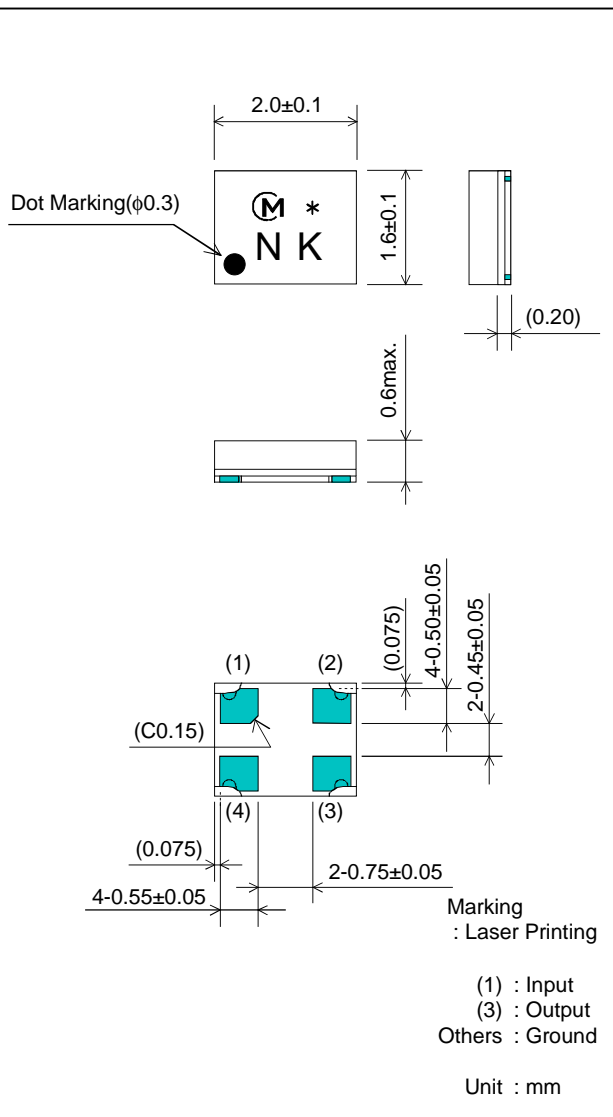
Feature

1. Ultra Small SMD package (2.0x1.6mm package)
2. Wide Band (38 MHz)
3. Low Insertion Loss (3.4 dB max.)

Test Circuit



Package Dimensions



Specification

| Item | Specification | |
|---|---------------|--------|
| | -20 to +85°C | typ. |
| Nominal Center Frequency(f _c) | 851 MHz | |
| Insertion Loss (832 to 870 MHz) | 3.4 dB max. | 2.6 dB |
| Absolute Attenuation | | |
| 1) 608 to 652 MHz | 20 dB min. | 30 dB |
| 2) 720 to 761 MHz | 20 dB min. | 33 dB |
| 3) 776 to 816 MHz | 20 dB min. | 31 dB |
| 4) 887 to 889 MHz | 34 dB min. | 48 dB |
| 5) 898 to 925 MHz | 35 dB min. | 37 dB |
| 6) 1000 to 1500 MHz | 20 dB min. | 33 dB |
| 7) 1500 to 2000 MHz | 23 dB min. | 27 dB |
| Ripple Deviation (832 to 870 MHz) | 2.7 dB max. | 1.5 dB |
| VSWR (832 to 870 MHz) | 2.2 max. | 1.9 |
| Input/Output Impedance (nominal) | 50Ω | |

SAW FILTER FOR J-CDMA (Rx)

Murata part number : SAFEF851MKC0F00

Frequency Performance

