

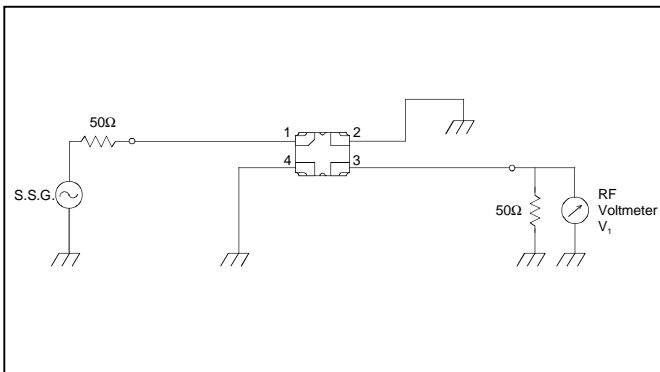
SAW FILTER FOR PHS RF

Murata part number : SAFZE1G90KA0T00

Feature

1. Small SMD package (SN22 package)
2. Ripple Deviation Flatness (0.7dB max.)
3. High Attenuation
(at 1986 to 2056MHz ; 30 dB min.)

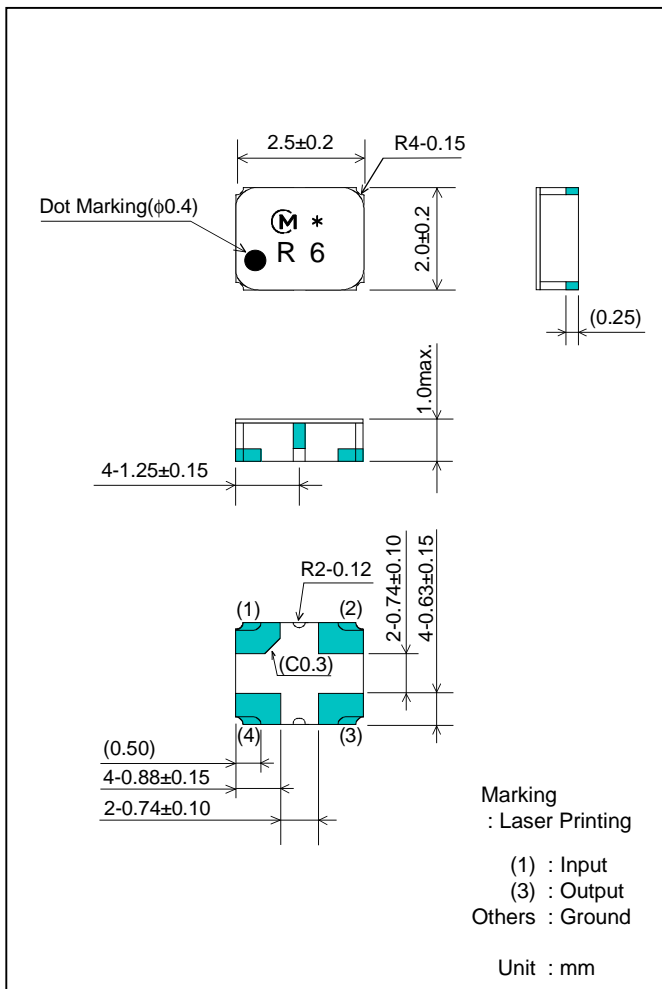
Test Circuit



Specification (-20 to +75°C)

Item	Specification
Nominal Center Frequency (fc)	1902.0 MHz
Insertion Loss (1884.55 to 1919.45MHz)	3.0 dB max.
Absolute Attenuation	
1) 1396 to 1432 MHz	25 dB min.
2) 1629 to 1676 MHz	30 dB min.
3) 1731 to 1801 MHz	30 dB min.
4) 1986 to 2056 MHz	30 dB min.
5) 2128 to 2164 MHz	35 dB min.
6) 2372 to 2408 MHz	30 dB min.
7) 3769 to 3839 MHz	20 dB min.
Ripple Deviation (1884.55 to 1919.45MHz)	0.7 dB max.
VSWR (1884.55 to 1919.45MHz)	2.6 max.
Input / Output Impedance (nominal)	50Ω

Package Dimensions



Frequency Characteristics

