

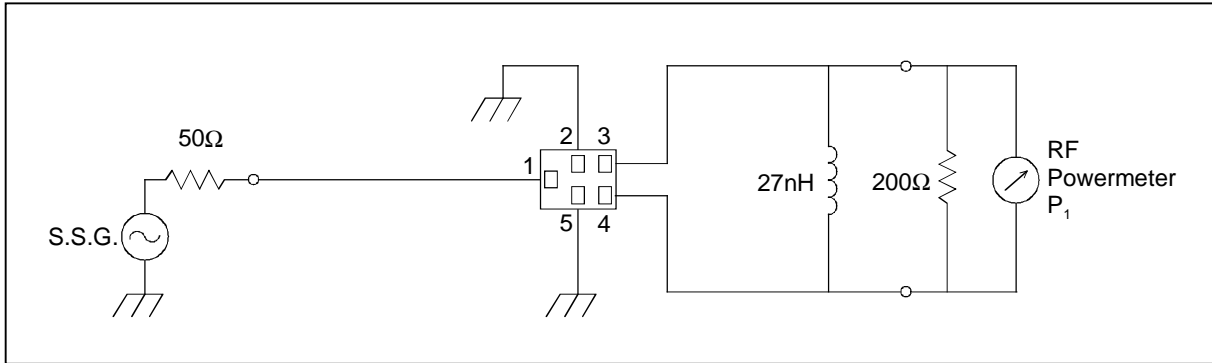
SAW FILTER FOR W-CDMA (Rx)

Murata part number : SAFEB2G14FA0F00

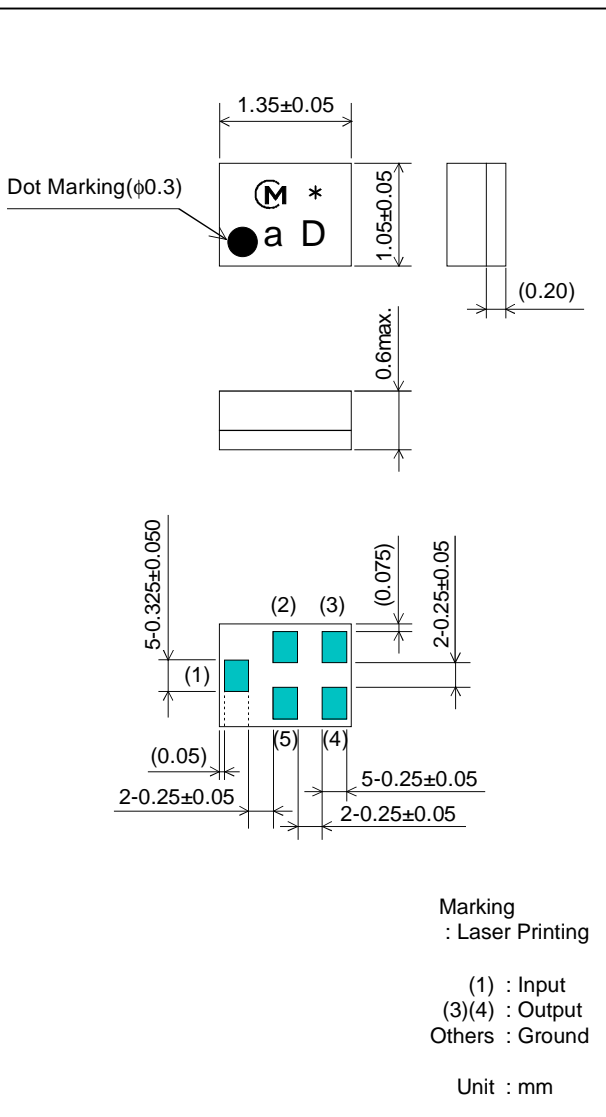
Feature

1. Low Insertion Loss (2.3 dB max.)
2. Balance type (50Ω//200Ω)
3. High Attenuation (at 1920 to 1980 MHz ; 43 dB min.)
4. Ultra Small SMD package (1.35x1.05mm package)

Test Circuit



Package Dimensions



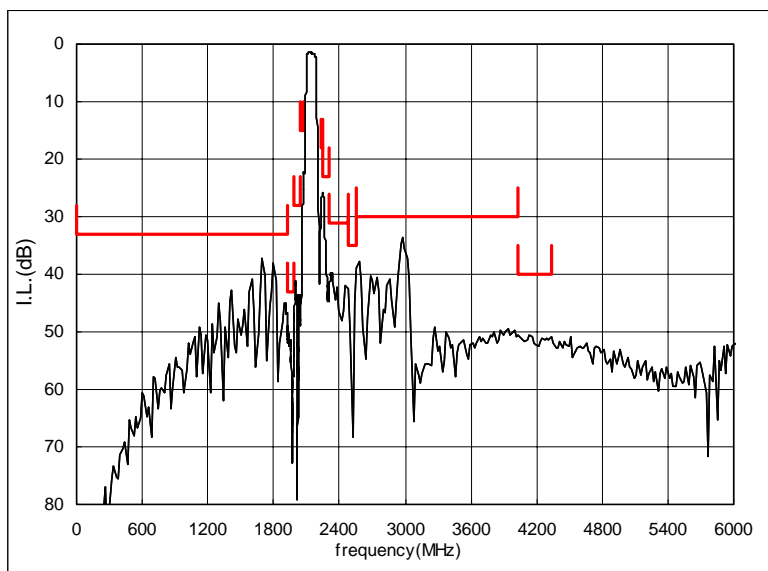
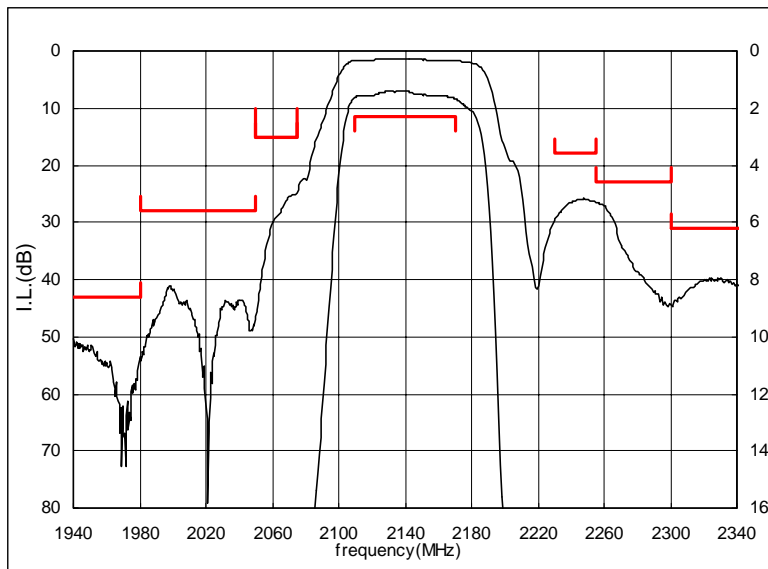
Specification

Item	Specification		
	-30 to 85°C	25±2°C	typ.
Nominal Center Frequency(fc)	2140MHz		
Insertion Loss (2110 to 2170MHz)	2.3dB max.	2dB max.	1.6 dB
Absolute Attenuation			
1) 0.1 to 1920 MHz	33 dB min.	33 dB min.	38 dB
2) 1920 to 1980 MHz	43 dB min.	43 dB min.	48 dB
3) 1980 to 2050 MHz	28 dB min.	28 dB min.	41 dB
4) 2050 to 2075 MHz	15 dB min.	15 dB min.	24 dB
5) 2230 to 2255 MHz	18 dB min.	18 dB min.	25 dB
6) 2255 to 2300 MHz	23 dB min.	23 dB min.	26 dB
7) 2300 to 2480 MHz	31 dB min.	31 dB min.	39 dB
8) 2480 to 2550 MHz	35 dB min.	35 dB min.	38 dB
9) 2550 to 4030 MHz	30 dB min.	30 dB min.	33 dB
10) 4030 to 4340 MHz	40 dB min.	40 dB min.	52 dB
11) 6330 to 6510 MHz	30 dB min.	30 dB min.	45 dB
Ripple Deviation (2110 to 2170MHz)	1.2dB max.	1dB max.	0.3 dB
VSWR (2110 to 2170MHz)	1.8 max.	1.7 max.	1.5
Amplitude Balance (2110 to 2170MHz)	±1.2dB max.	±1.0dB max.	+0.6dB
Phase Balance (2110 to 2170MHz)	180±10deg. max.	180±9deg. max.	180+5deg.
Input Impedance (nominal)	50Ω		
Output Impedance (nominal)	200Ω//27nH		

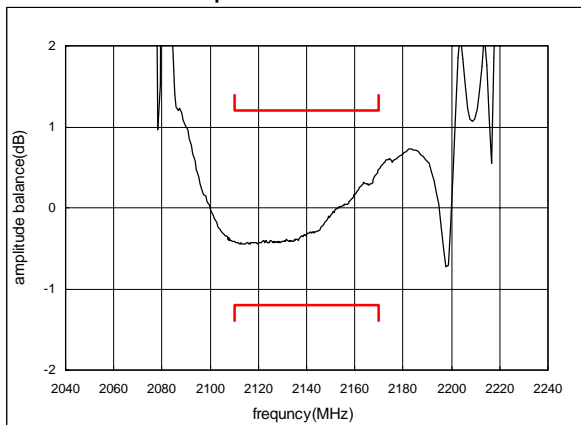
SAW FILTER FOR W-CDMA (Rx)

Murata part number : SAFEB2G14FA0F00

Frequency Performance



Amplitude balance



Phase balance

