

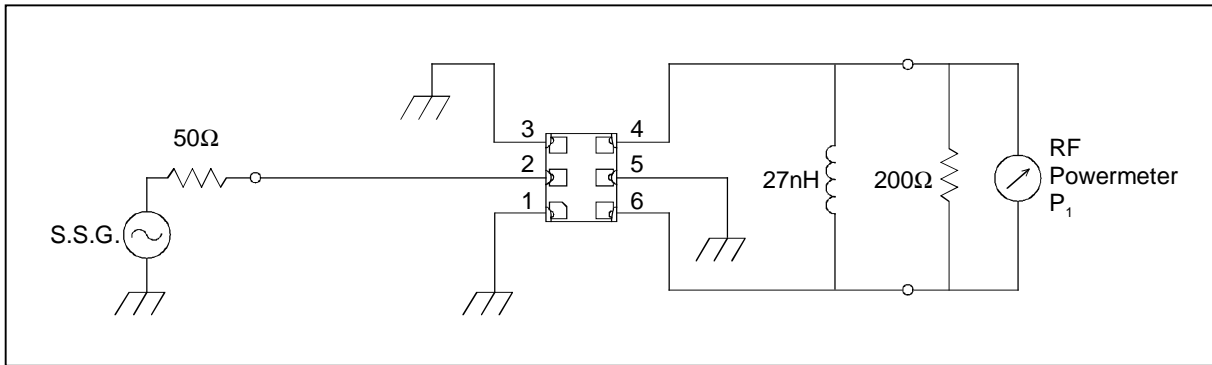
SAW FILTER FOR W-CDMA (Rx)

Murata part number : SAFEH2G14FA0F00

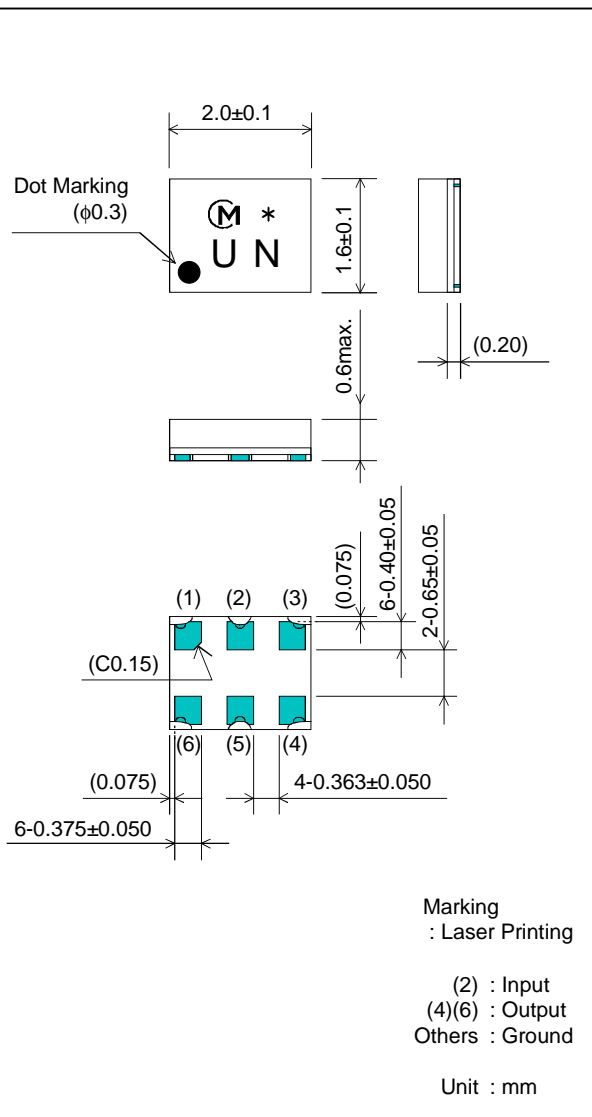
Feature

1. Low Insertion Loss (2.3 dB max.)
2. Balance type (50Ω//200Ω)
3. High Attenuation (at 1920 to 1980 MHz ; 42 dB min.)
4. Ultra Small SMD package (2.0x1.6mm package)

Test Circuit



Package Dimensions



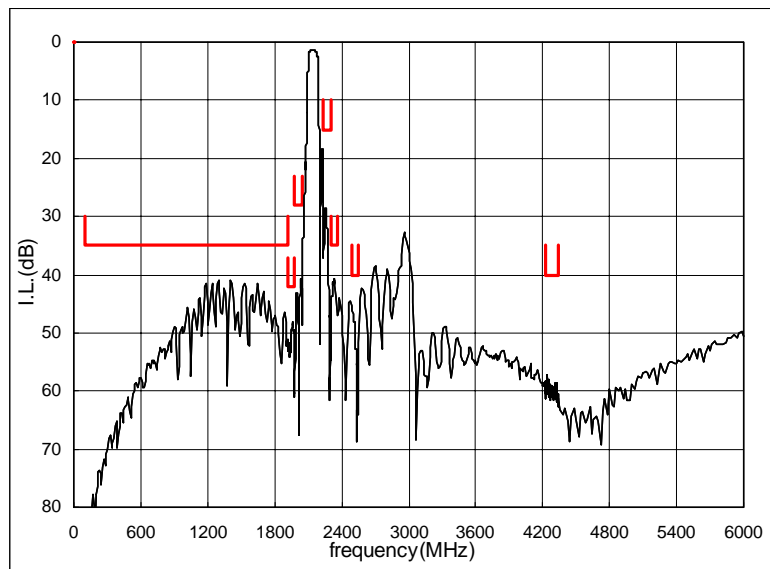
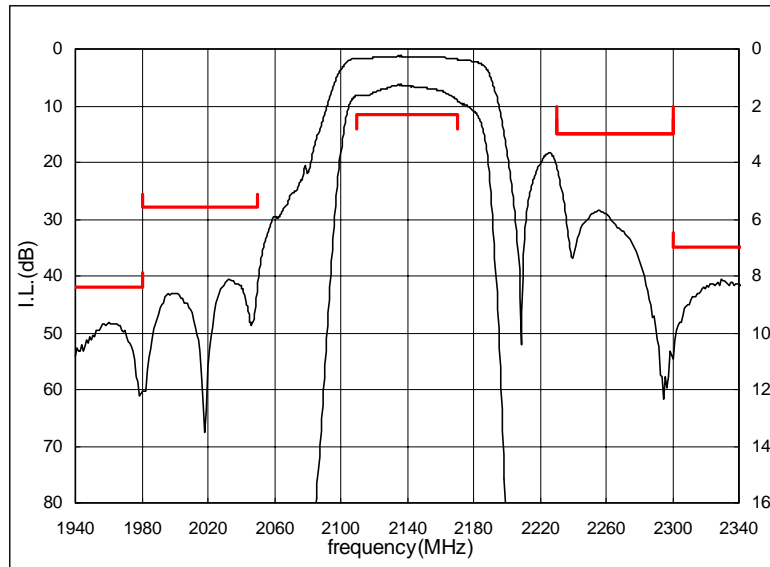
Specification

Item	Specification		
	-30 to 85°C	25±2°C	typ.
Nominal Center Frequency(fc)	2140MHz		
Insertion Loss (2110 to 2170MHz)	2.3dB max.	2.2dB max.	1.7 dB
Absolute Attenuation			
1) 100 to 1920 MHz	35 dB min.	35 dB min.	41 dB
2) 1920 to 1980 MHz	42 dB min.	42 dB min.	47 dB
3) 1980 to 2050 MHz	28 dB min.	28 dB min.	37 dB
4) 2230 to 2300 MHz	15 dB min.	15 dB min.	22 dB
5) 2300 to 2360 MHz	35 dB min.	35 dB min.	40 dB
6) 2490 to 2550 MHz	40 dB min.	40 dB min.	45 dB
7) 4220 to 4340 MHz	40 dB min.	40 dB min.	57 dB
Ripple Deviation (2110 to 2170MHz)	1.2dB max.	1.1dB max.	0.6 dB
Ripple Deviation Any 5MHz (2110 to 2170MHz)	0.5dB max.	0.5dB max.	0.2 dB
VSWR (2110 to 2170MHz)	1.8 max.	1.7 max.	1.4
Amplitude Balance (2110 to 2170MHz)	±1.4dB max.	±1.0dB max.	±0.8dB
Phase Balance (2110 to 2170MHz)	180±10deg. max.	180±10deg. max.	180±3deg.
Input Impedance (nominal)	50Ω		
Output Impedance (nominal)	200Ω//27nH		

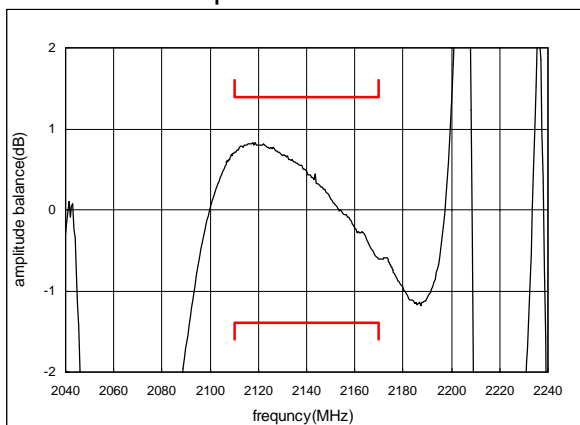
SAW FILTER FOR W-CDMA (Rx)

Murata part number : SAFEH2G14FA0F00

Frequency Performance



Amplitude balance



Phase balance

