

Murata Components Library for Ansoft Designer[®]/Nexxim[®]

Installation Manual

Download Murata Library

- **Murata Components Library for Ansoft Designer[®] /Nexxim[®]** has two versions, one for EIA and the other for JIS.
- Please download the necessary version for your use.
 - EIA Murata Library *[Murata_Library_EIA.zip](#)*
 - JIS Murata Library *[Murata_Library_JIS.zip](#)*

Note)

Please select only one library for the installation. Two version of library can not co-exist in the Ansoft Designer[®] Library.

Installing on Ansoft Designer® Folder

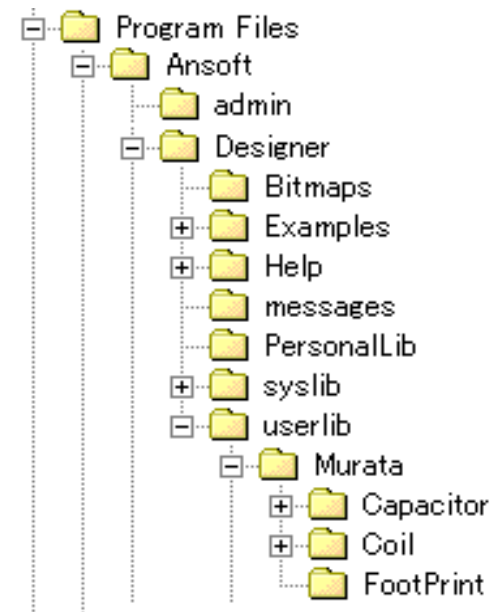
- Unzip the download file.
- Copy the whole Murata folder into *<Ansoft Installation Folder>/userlib*.

For example, “*C:/Program Files/Ansoft/Designer/userlib*”

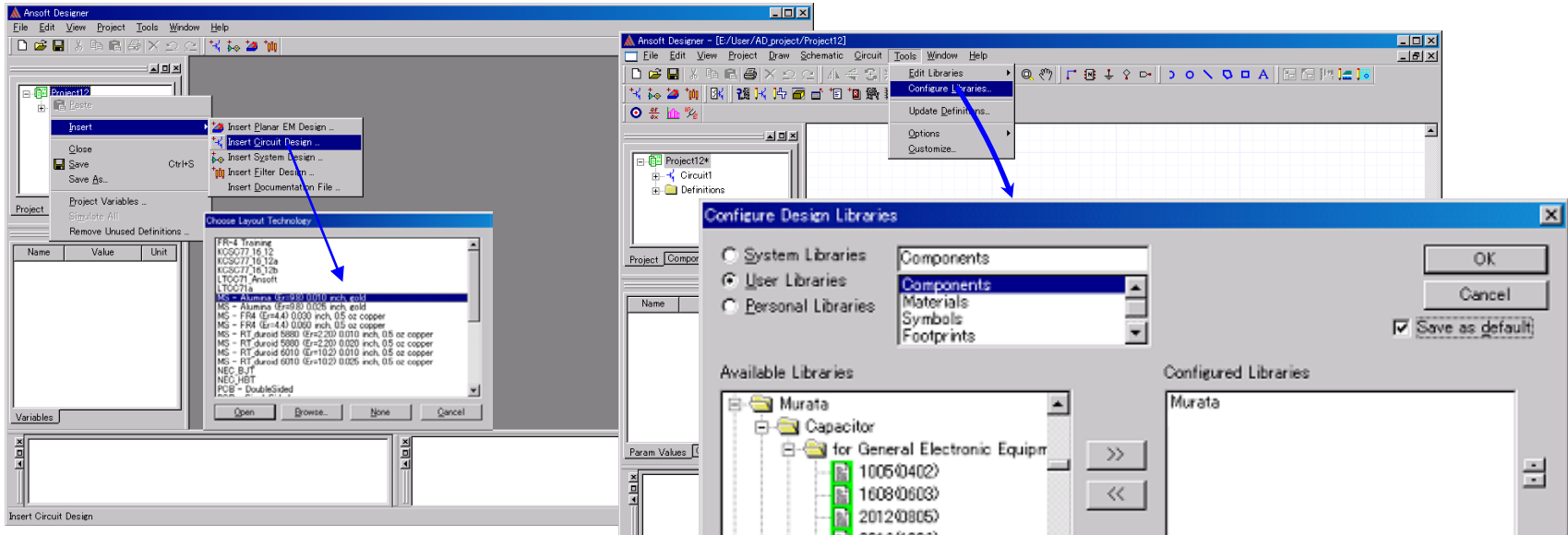
If Murata folder of previous version exist, delete in advance.

- Move SMTGlobalControl.bmp in Murata folder into *<Ansoft Installation Folder>/Bitmaps*.

This completes the installation of the library.

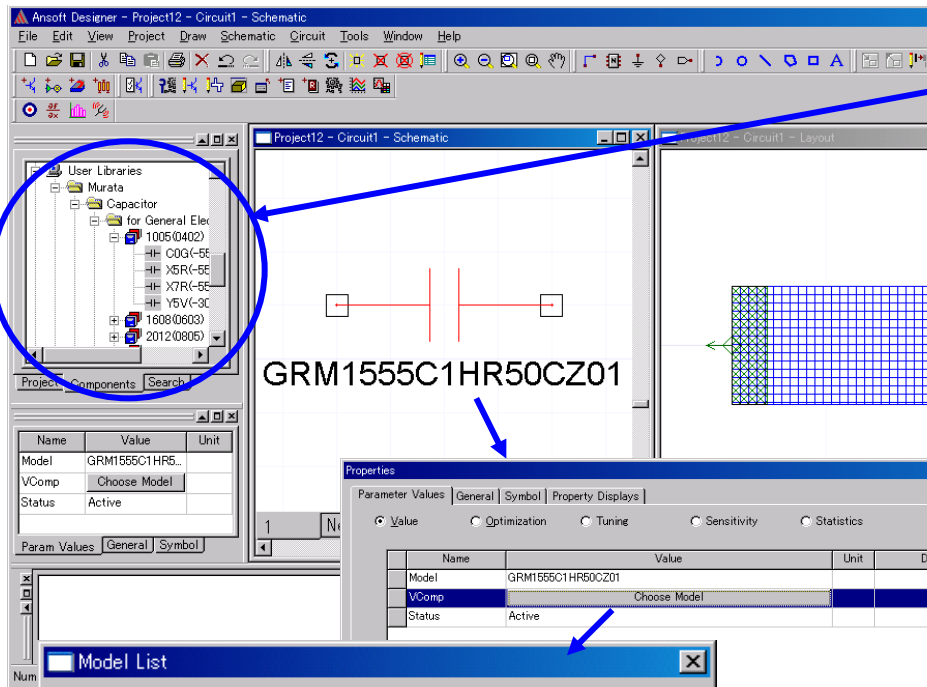


Using Murata Library in Ansoft Designer®

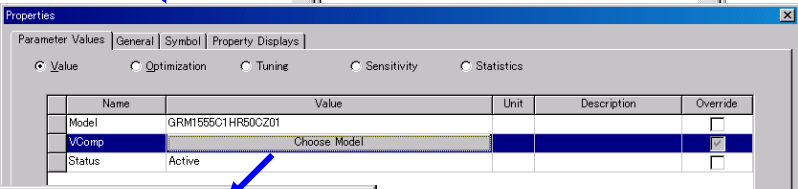


1. Launch **Ansoft Designer®**
2. In the **Project**, insert circuit editor by using **<Insert Circuit Design...>**
3. **Technology File** (board data) window opens. Select the desired board material.
4. **Schematic Editor** now opens and design environment is now ready to use.
5. From the bar menu, select **Tools>Configure Libraries...**
6. Click on **User Libraries** and select **Components**. Select **Murata Folder** and move to **Configure Libraries**.
7. Repeat the same procedure for the **Footprint** and **Symbols**.
7. **Save as Default** allows user to set the Murata Library as default library and when the new design is inserted, Murata Library shows up automatically.

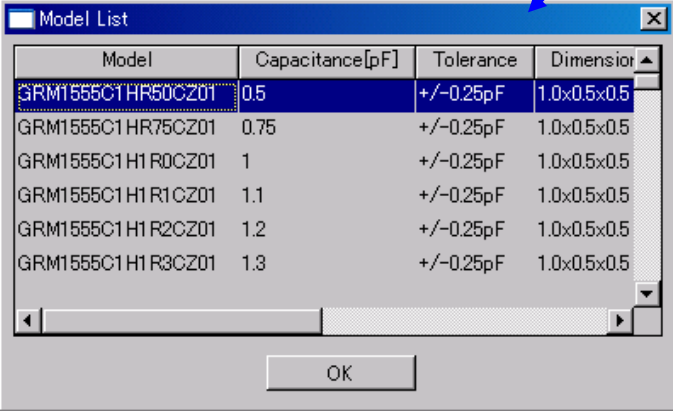
Selecting Components in Ansoft Designer®



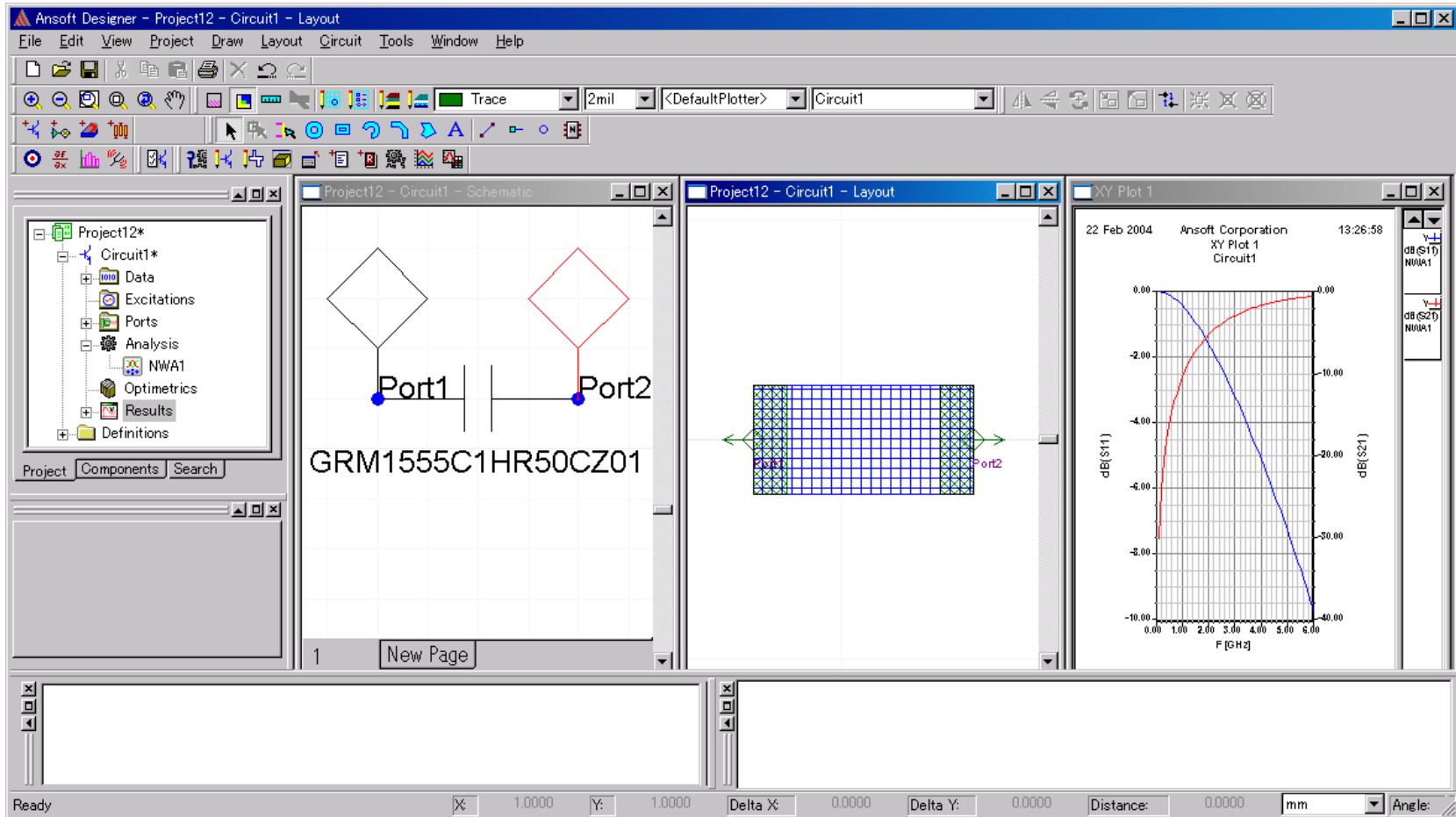
Components can be selected in Components Browser. Murata Library is stored in Murata Folder.



Property window opens when the component is double clicked. Use *Chose Model* to select desired Parts.



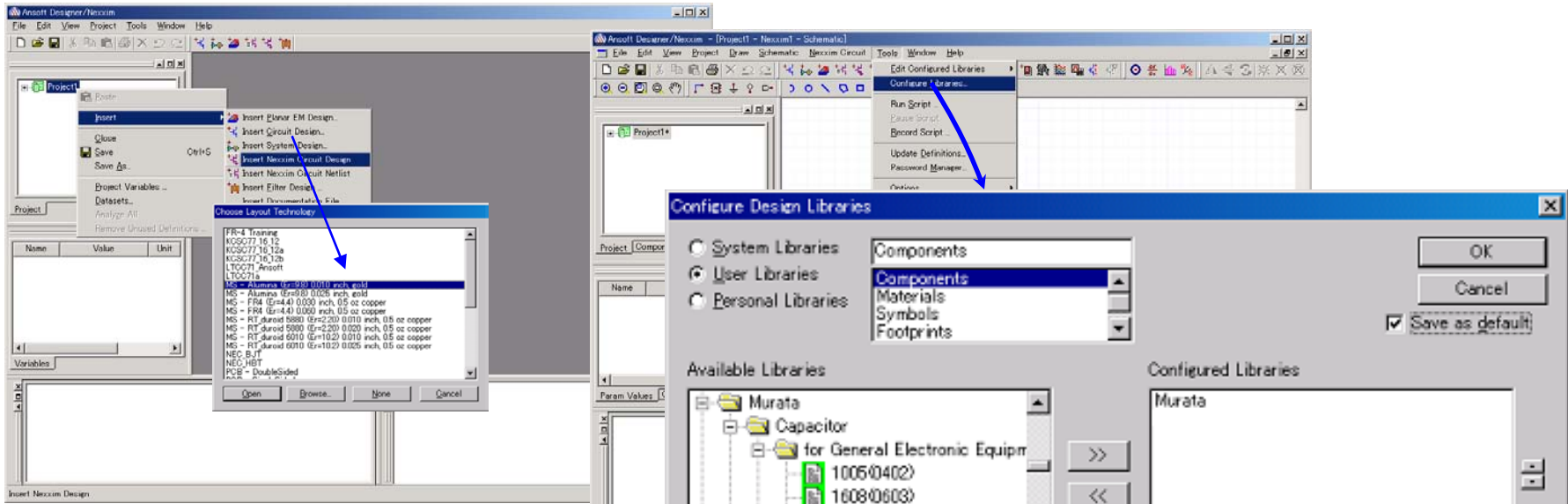
Displaying Simulation Results



By placing the Ports on your circuit or component, user can simulate the circuit and display the results. (Details are described in user manual.)

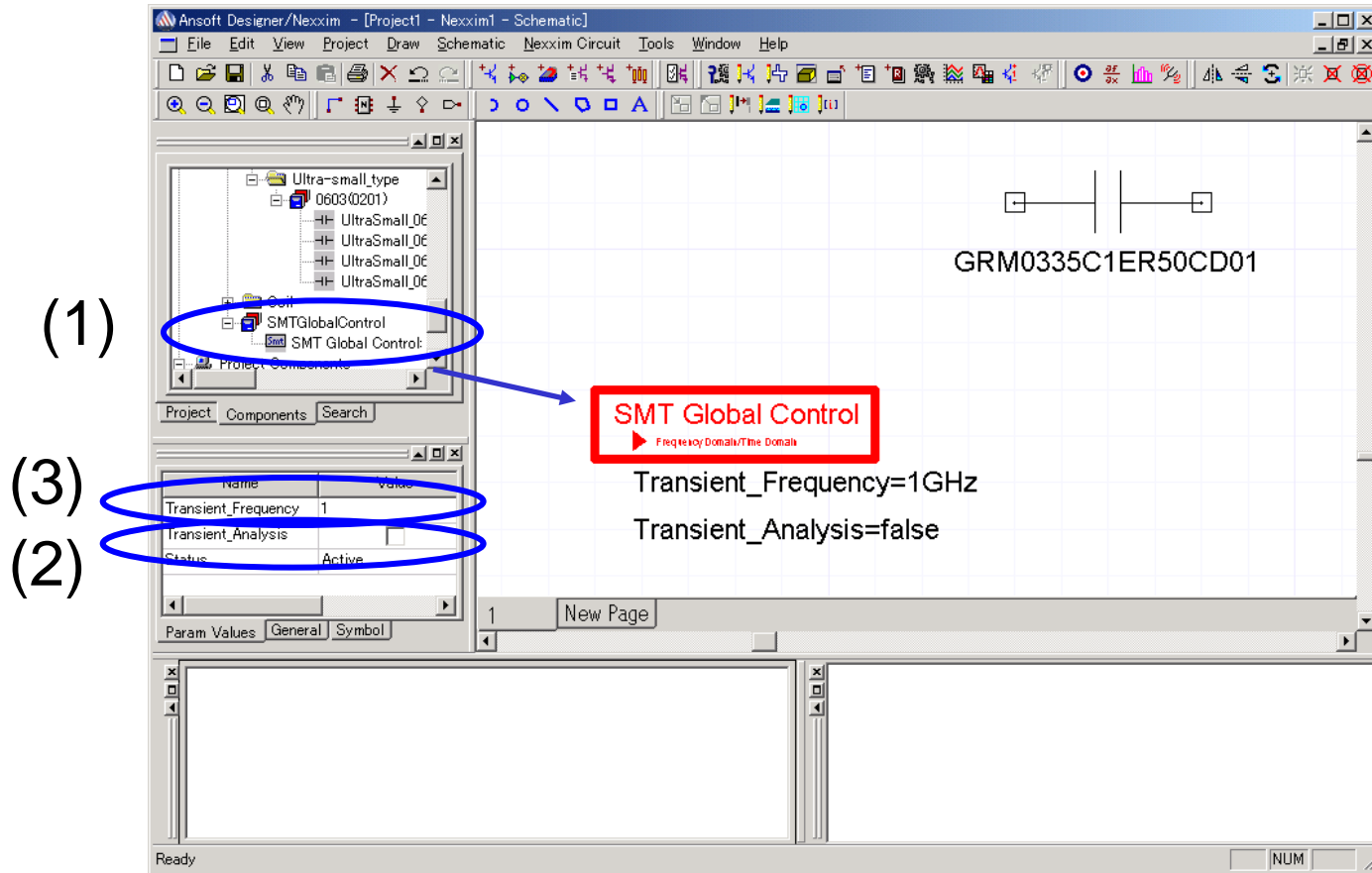
Using Murata Library in Nexxim®

If you can use Nexxim®, configure the settings as below before you use Murata Library.



1. Launch **Ansoft Designer®**
2. In the **Project**, insert Nexxim® circuit editor by using **<Insert Nexxim® Circuit Design...>**
3. **Technology File** (board data) window opens. Select the desired board material.
4. **Schematic Editor** now opens and design environment is now ready to use.
5. From the bar menu, select **Tools>Configure Libraries...**
6. Click on **User Libraries** and select **Components**. Select **Murata Folder** and move to **Configure Libraries**.
Repeat the same procedure for the **Footprint**
7. **Save as Default** allows user to set the Murata Library as default library and when the new design is inserted, Murata Library shows up automatically.

How to use the components in Nexxim[®]



- (1) Place “SMT Global Control” of Murata Components without fail when you design Nexxim[®] circuit.
- (2) Check “Transient_Analysis” in the property of “SMT Global Control” when you use the transient analysis.
- (3) Enter the basic frequency of the signal into “Transient_Frequency” of “SMT Global Control”.