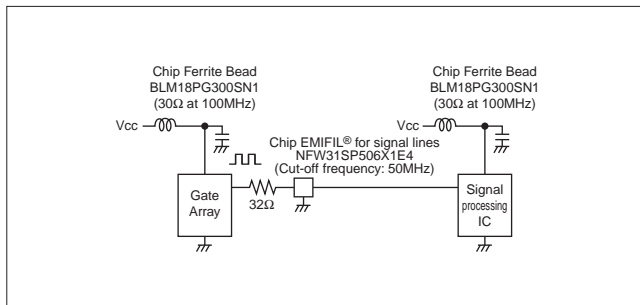


## Example of Noise Suppression in Printers 6

### Installing EMI filters on the Clock Line

Clock signals generate high frequency noise. Noise and signal frequencies may be close to each other. Therefore, an EMI filter with high and steep attenuation is used, such as the NFW31S series (Chip EMIFIL® for signal lines) or the BLM□□B series (Chip Ferrite Bead For high-speed signal lines).

Noise caused by transient currents is also generated on the power supply line. Therefore, a chip ferrite bead is installed, as well as a by-pass capacitor, to suppress noise on the power supply line.



### Example of effects produced when installing EMI filters on the Clock lines

Noise suppression effects produced when installing the EMI filter on the data clock lines.

