

DSRC/C-V2X Solutions

Type 1YL/2AN

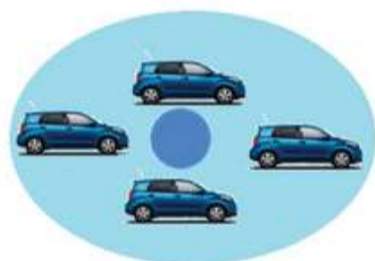
V2X (Vehicle-to-Everything) is a wireless communication technology that connects cars to all types of things. Murata's V2X modules support both the Dedicated Short Range Communications (DSRC) and Cellular V2X (C-V2X) standards based on Autotalks (Qualcomm) solution. Murata's C-V2X variant also includes a processor capable of running V2X middleware and applications and an optional secure CAN MCU.



Key Features / Advantageous

- Dual V2X solution (Global support)
- Compact size and Easy connector option model available
- Wide temperature range from -40°C to 105°C
- Hardware security module (eHSM)
- Dual core ARM Cortex A7 CPU / 2AN
- Built-in semiconductor memory / 2AN
- DSRC : IEEE802.11p, C-V2X : 3GPP Release 14/15.
- IF supports USB / SPI / UART / CAN / Ethernet (MAC) / 2AN

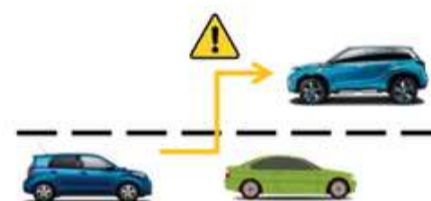
Key Applications / Use Cases



Platooning/ Cooperative Adaptive Cruise Control



Collision warning and cooperative braking



Lane changing/ merging



Autonomous driving



Pedestrian safety



Connected Automated Parking



Cooperative intersection Control

Products & Specifications

• Product based on Autotalks SECTON/ PLUTON/ CRATON chipsets	• 5GHz operation
• Support compensator for longer wired communication	• ETSI and IEEE standard supports

Others

Murata collaborates with ITS company, Zero-Sum ITS Solutions India Pvt. Ltd., for their Sub-GHz+5.9GHz PoC in Ahmedabad. Murata's module is in actual India city!

