

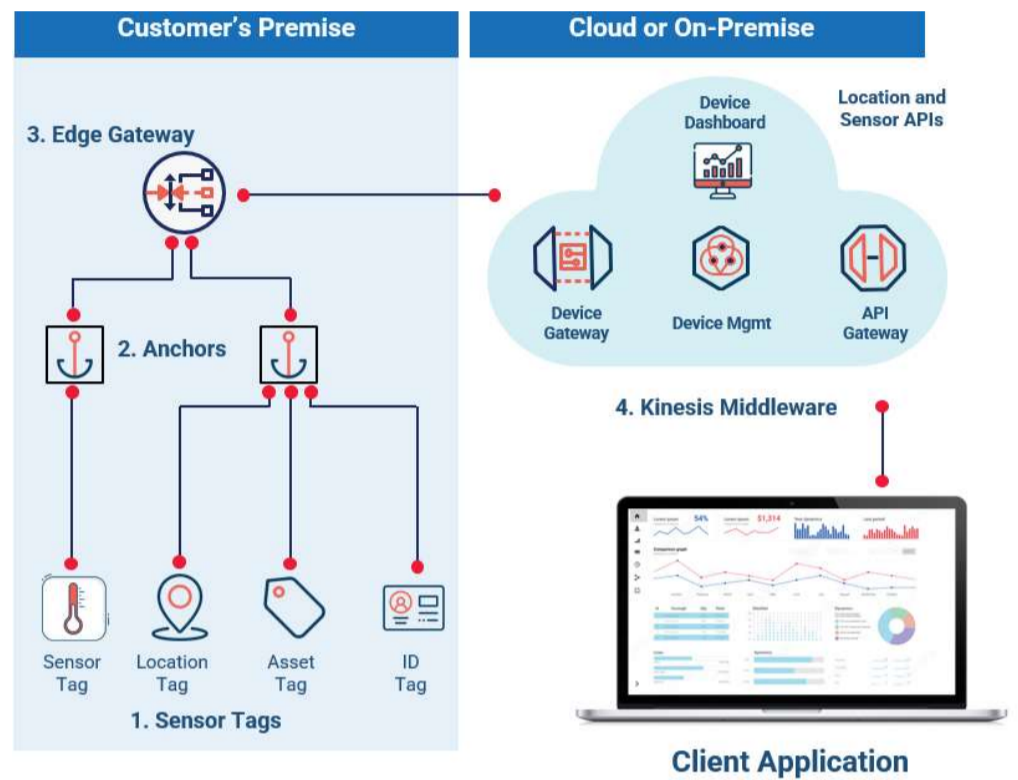
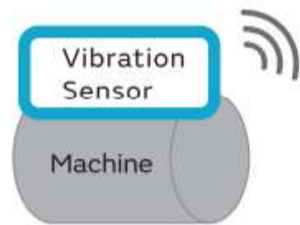


UWB RTLS

UWB RTLS is an advanced indoor tracking solution targeted for precised location access, which is used in industries, factories, warehouses, medical, office spaces and other public areas.

The tracking object or person will be equipped with UWB tags and will be precisely monitored by UWB anchors. The information will be passed to the cloud.

UWB features like AoA, TWR , PDoA are the methods enabled for tracking algorithm creation.



Solution Design

- 1 Targeting for any industry to track their valuable asset or person, for an effective outcome or process easiness.
- 2 RTLS is a solution which is best suitable for an indoor tracking with 10cm accuracy expected.
- 3 ATOLL will provide a comprehensive RTLS stack and customisable application.
- 4 Anchor, TAG and Gateway make an RTLS system rigid.
- 5 Easy to configure user interface portal available for quick access and the system support auto correction/ calibration.

Solution Objectives

- 1 Track with high accuracy
- 3 Increase the security and safety
- 2 Avoid misplacement
- 4 Increase solution yield and profitability

Possible Applications/Use Cases

