

## μSD-M.2 Adapter

### μSD-M.2 adapter

Customized Wi-Fi®/Bluetooth®  
for NXP's i.MX RT, i.MX 6 & i.MX 8

#### MCUXpresso FreeRTOS Platforms

- i.MX RT 1020 EVK
- i.MX RT 1050 EVK
- i.MX RT 1060 EVK
- i.MX RT 1064 EVK

#### Linux Platforms

- i.MX 8M Mini/Nano EVK
- i.MX 6UL/ULL EVK
- i.MX 6SX SDB
- i.MX 6Q(P)/DL SDB

#### Features

- microSD (uSD) interface for WLAN-SDIO (SD is an option with microSD-SD adapter)
- Arduino Headers (i.MX RT/8) or Flat/Flex Connector (i.MX 6) for BT UART/PCM and WLAN/BT control signals
- Optional power, debug, and clocking signals connect through Arduino Header or Micro-AB USB connector
- Specifically designed/engineered for compatibility with Embedded Artists' Wi-Fi®/Bluetooth® M.2 Modules
- Type 1DX, 1MW, 1LV, 1ZM, and 1YM M.2 Modules compatible with Adapter - pictured below

#### Embedded Artists M.2 modules

1YM



1ZM



1DX



1MW



1LV



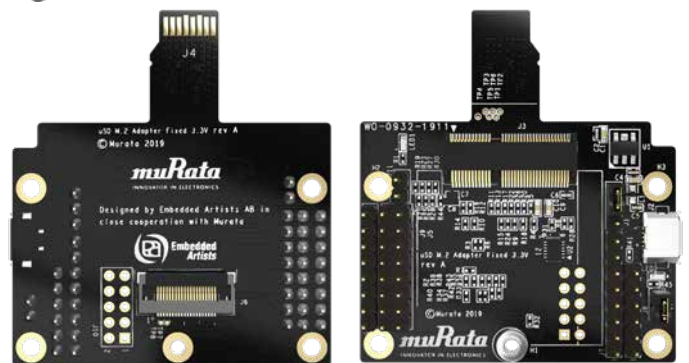
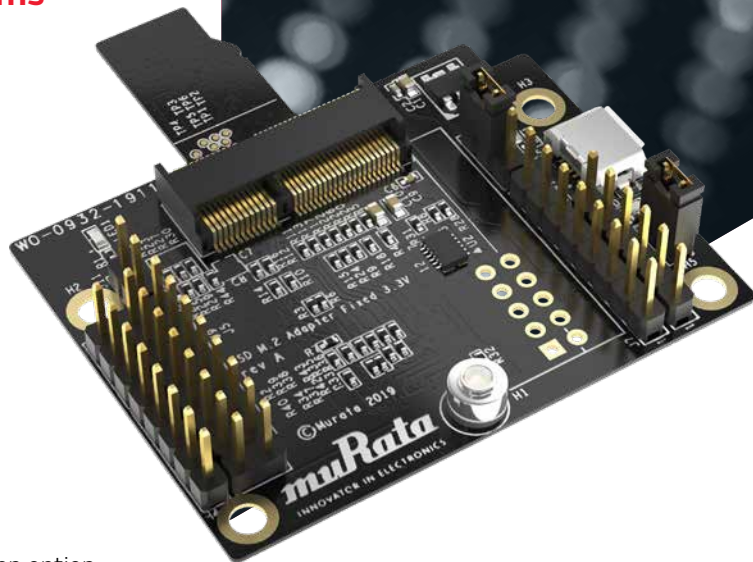
#### More details:

- <https://wireless.murata.com/usd-m2>
- <https://www.embeddedartists.com/m2>

[www.murata.com](http://www.murata.com)

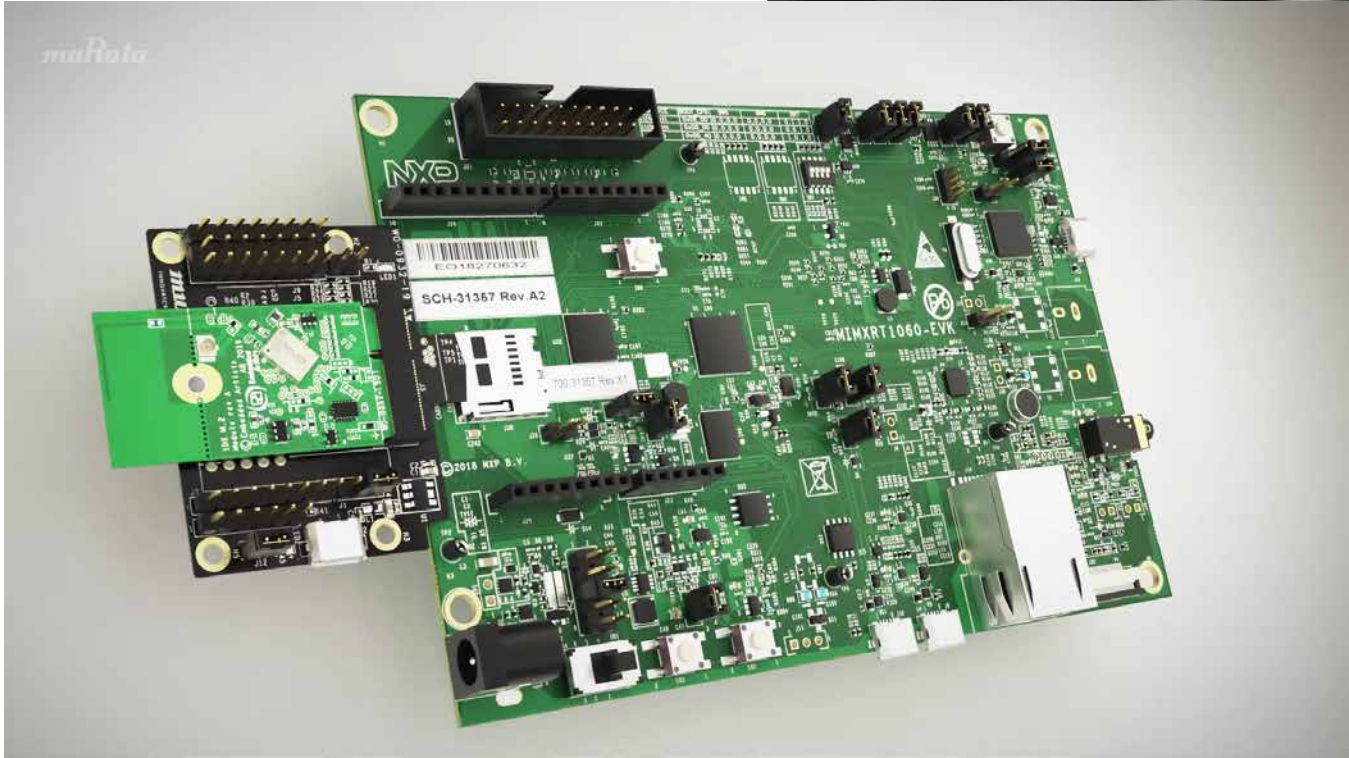
Contents are subject to change without notice.

**muRata**  
INNOVATOR IN ELECTRONICS

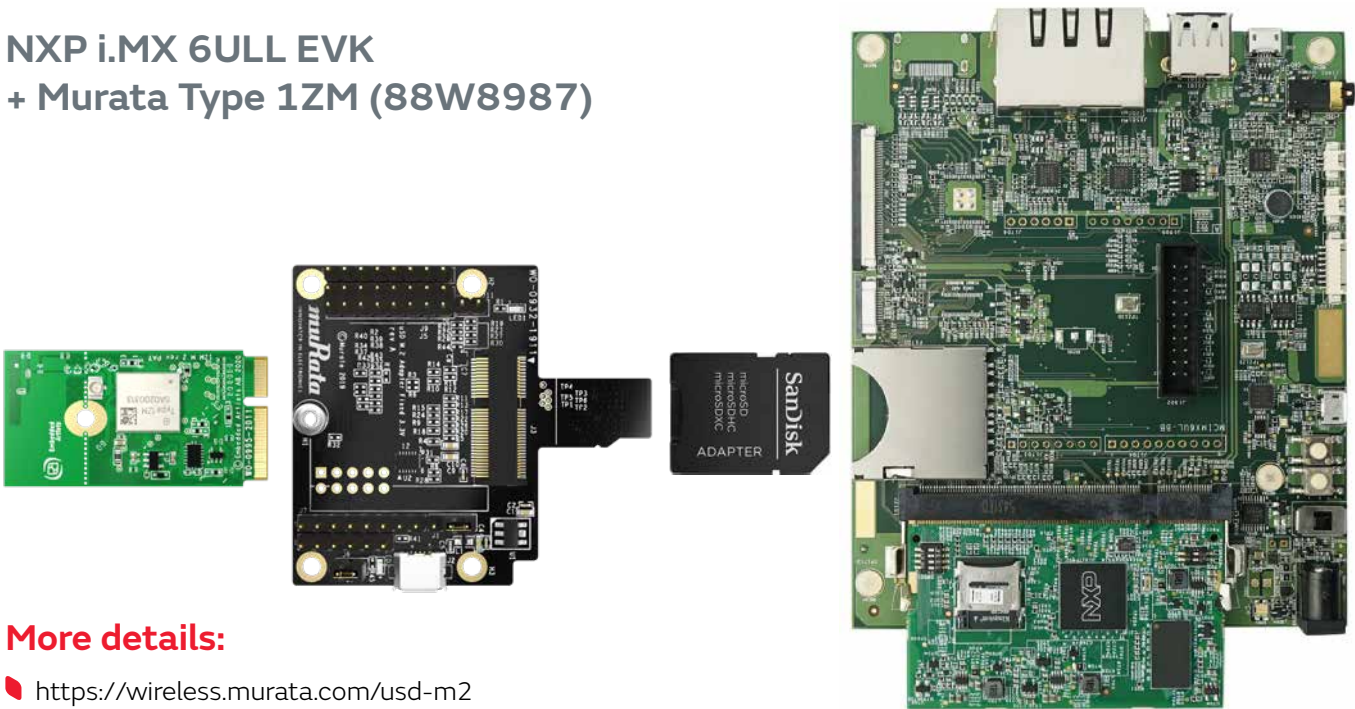


## Examples

NXP's i.MX RT 1060 EVK  
+ Murata Type 1DX (CYW4343W)



NXP i.MX 6ULL EVK  
+ Murata Type 1ZM (88W8987)



### More details:

- 📌 <https://wireless.murata.com/usd-m2>
- 📌 <https://www.embeddedartists.com/m2>