

**SCA8X0/21X0/3100 PWB**  
Specification

## 1 Introduction

The purpose of SCA8X0/21X0/3100 PWB is to enable fast prototyping.

SCA8X0/21X0/3100 PWB includes

- SCA3100, SCA21X0 or SCA8X0 sensor soldered on PWB
- PWB version A: design # VT129495A0 with pin headers
- Connectors and passive components

Refer to "SCA8x0\_21x0\_3100\_product\_family\_specification\_82\_694\_00C" when using the SCA8X0/21X0/3100 PWB.

## 2 SCA8X0/21X0/3100 PWB

Detailed BOM of SCA8X0/21X0/3100 PWB version A is presented in Table 1 below.

Table 1. BOM of SCA8X0/21X0/3100 PWB version A.

Item	Qty	Ref	Part Name / type	Value
1	2	C1,C3	Capacitor / 0603	100 nF
2	1	J1	8-pin through hole pin header, pitch 100 mils	
3	1	J2	7-pin through hole pin header, pitch 100 mils	
4	1	SCA8X0/21X0/3100	SCA8X0, SCA21X0 or SCA3100 sensor	
5	1		PWB (VT129495A0) / FR4, thickness 1,6 mm, size 20,0 × 23,0 mm	

Detailed pictures of SCA8X0/21X0/3100 PWB are presented in following pages:

- Circuit diagram
- PWB layout
- Assembly drawings

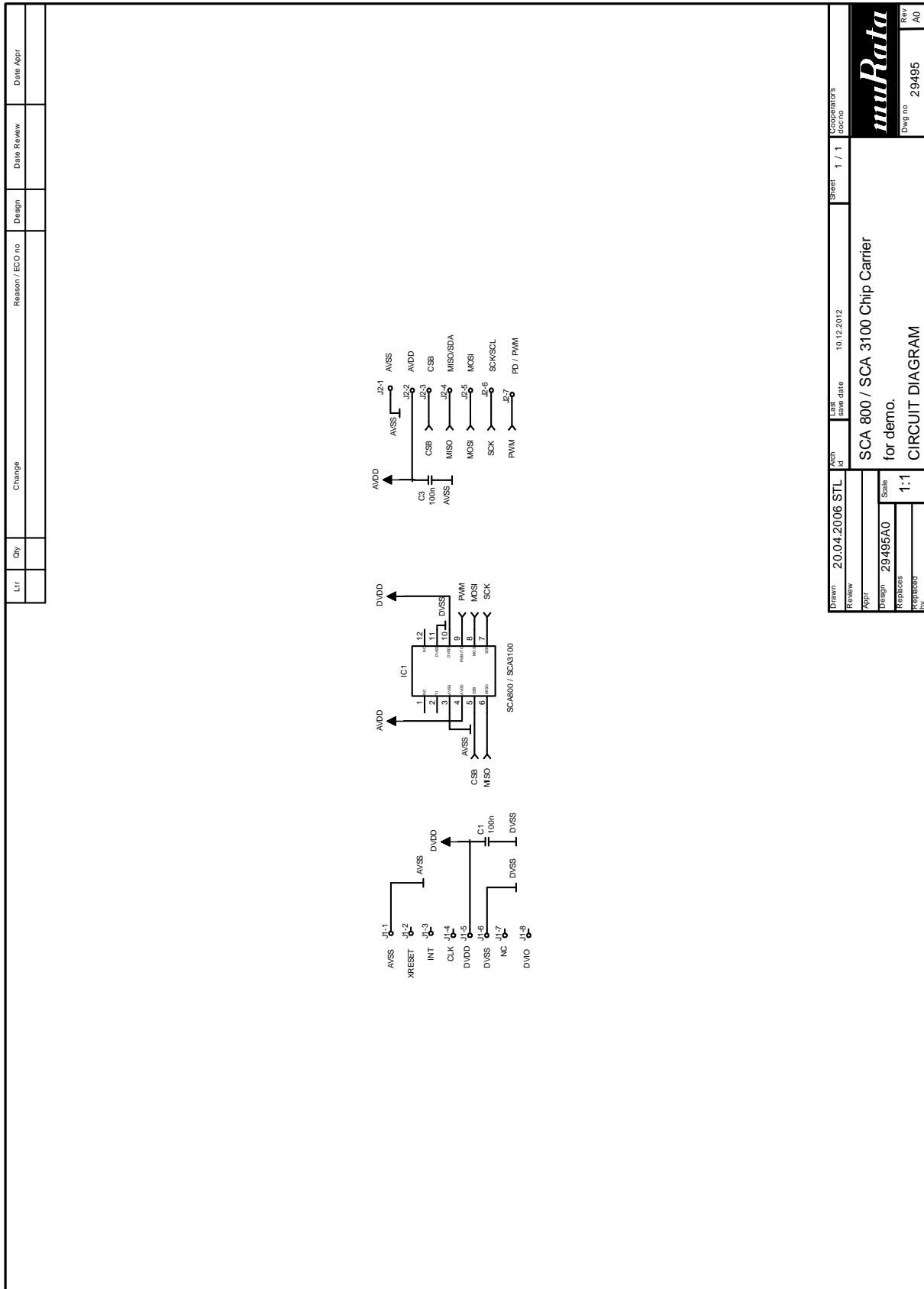


Figure 1. SCA8X0/21X0/3100 PWB Schematics.

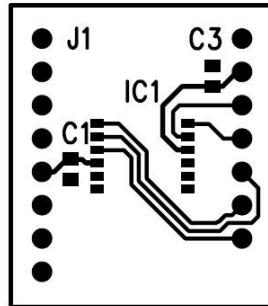


Figure 2. SCA8X0/21X0/3100 PWB Top Layer Layout.

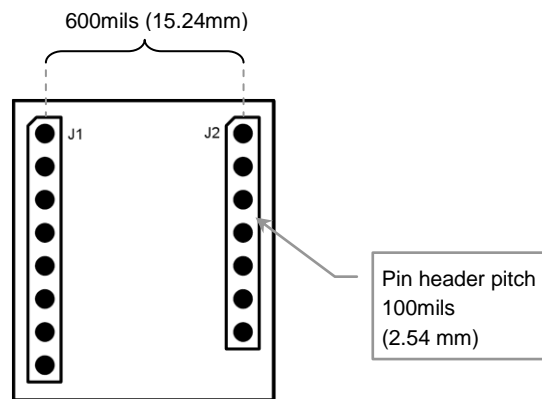


Figure 3. SCA8X0/21X0/3100 PWB Bottom View and Mechanical Dimensions.