

SMD Piezoelectric Sounders for Automotive & Industrial/ Security

PKLCS1212E Series



PKLCS1212E24A0-R1



PKLCS1212E40A1-R1

NEW!

PKMCS1818E Series



PKMCS1818E20A0-R1

Application

- Parking Assist System
- Warning Alarm
- Power slide door
- Electric key etc.



Features

Wide Operational Temperature Range

PKLCS1212E Series: -40 to +85 °C

PKMCS1818E Series: -40 to +105 °C

Stable electrical performance

Quite stable electrical performance after reflow soldering

Small, thin and lightweight

PKLCS1212E Series: 12×12×3mm, 360mg

PKMCS1818E Series: 18×18×8mm, 950mg

High SPL

PKLCS1212E Series: 80 to 84dB(Typ.)

PKMCS1818E Series: 100dB(Typ.)

Low Power Consumption

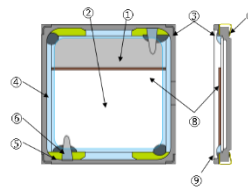
Lower power consumption by higher impedance at operating frequency can preserve longer battery life (0.4 to 0.5mA@3Vo-p ※reference value)

No magnetic noise

There is no electrical noise because of no magnet and/or coil in structure.

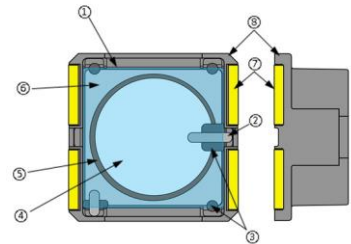
Structure

PKLCS1212E Series



①	Metal Plate
②	Inner Electrode
③	Case
④	Sealing Material
⑤	Insulating Adhesive
⑥	Conductive Adhesive
⑦	Outer Terminal
⑧	Ceramic Element
⑨	Case(Cover)

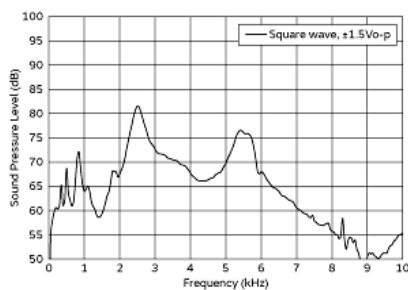
PKMCS1818E20A0-R1



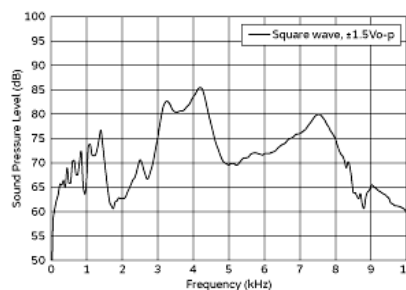
①	Insulating Adhesive
②	Conductive Adhesive
③	Insulating Adhesive
④	Electrode
⑤	Ceramic Element
⑥	Metal Plate
⑦	Terminal
⑧	Case

SPL-Frequency Characteristics (Typical Data)

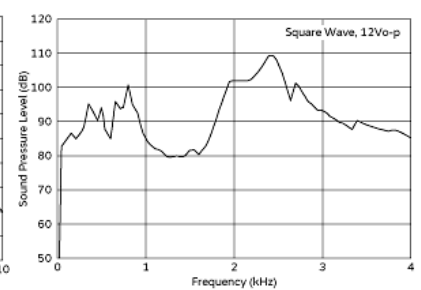
PKLCS1212E24A0-R1



PKLCS1212E40A1-R1



PKMCS1818E20A0-R1



Specifications

Part Number	PKLCS1212E24A0-R1	PKLCS1212E40A1-R1	PKMCS1818E20A0-R1
Frequency	2.4kHz	4.0kHz	2.0kHz
Sound Pressure Level	80dB (typ.)	84dB (typ.)	100dB (typ.)
Measurement Condition	±1.5Vo-p, square wave, 10cm		12Vo-p, square wave, 10cm
Maximum input voltage	±12.5 Vo-p max.		18.0Vo-p [with polarity]
Operating Temperature Range	-40 to +85 °C		-40 to 105 °C
Storage Temperature Range	-40 to +85 °C		-40 to 105 °C
Drive Type	External Drive		

*PKLCS series(1.2×1.2×3.0 mm) also has a lineup of
 -Frequency rating of 2.0kHz.
 -For Consumer usage.

*Please refer to below link or QR code for more details

Piezoelectric Sounders / Buzzers

<http://www.murata.com/en-global/products/sound/sounder>



"my Murata" Sound Components site Exclusive Contents

<https://my.murata.com/en/web/sound/members/mymurataexclusivecontentslist>



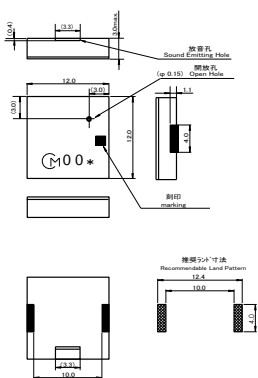
Six reasons why Murata's SMD sounders are selected

<http://www.murata.com/en-global/products/sound/sounder/smdsounder>

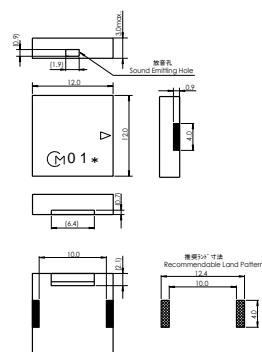


Dimension, Standard Land Pattern Dimensions (in mm, Tol.: ±0.2mm)

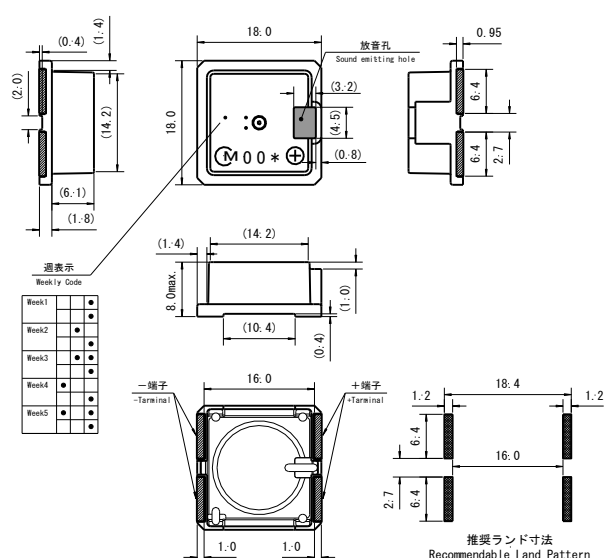
PKLCS1212E24A0-R1



PKLCS1212E40A1-R1



PKMCS1818E20A0-R1



(Note)
The location of open hole is not specified.