

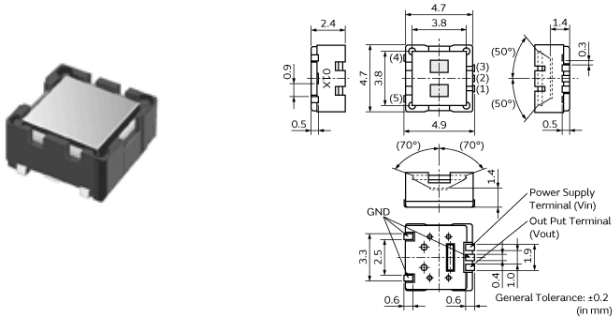
# IRS-B210ST01-R1

Discontinued

RoHS

REACH

## Appearance & Shape



## Packaging Information

Packaging	Specifications	Standard Packing Quantity
R1	Reel	2000

## Features

SMD type

**Attention**  
1.This datasheet is downloaded from the website of Murata Manufacturing Co., Ltd. Therefore, it's specifications are subject to change or our products in it may be discontinued without advance notice. Please check with our sales representatives or product engineers before ordering.  
2.This datasheet has only typical specifications because there is no space for detailed specifications.  
Therefore, please review our product specifications or consult the approval sheet for product specifications before ordering.

# IRS-B210ST01-R1



## Specifications

Shape	SMD
Electrode	(1.2x0.85mm)x2
Responsivity(typ.)	3.6mV
Supply Voltage Range	2V to 15V
Field of View	theta1=50deg.,theta2=70deg.
Operating Temperature Range	-40°C to 70°C
Storage Temperature Range	-40°C to 85°C

### Attention

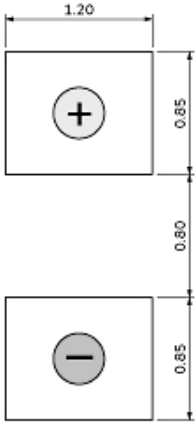
1.This datasheet is downloaded from the website of Murata Manufacturing Co., Ltd. Therefore, it's specifications are subject to change or our products in it may be discontinued without advance notice. Please check with our sales representatives or product engineers before ordering.

2.This datasheet has only typical specifications because there is no space for detailed specifications.

Therefore, please review our product specifications or consult the approval sheet for product specifications before ordering.

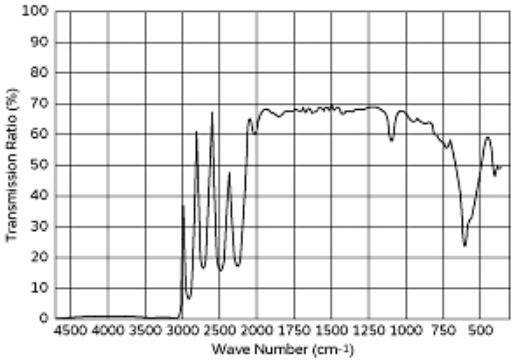
# IRS-B210ST01-R1

## Product Data

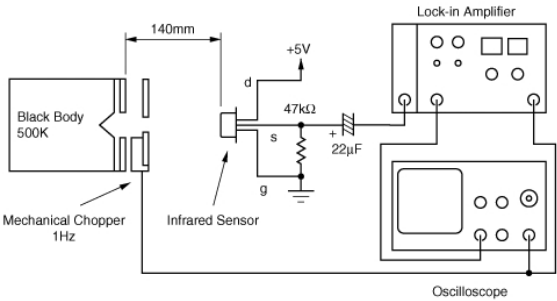


(in mm)

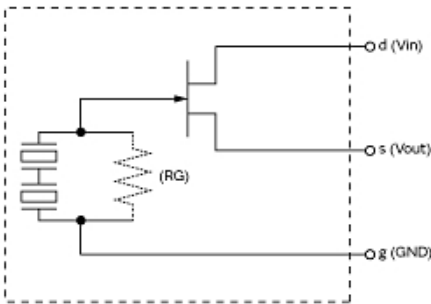
Pyroelectric Element



Filter characteristics



Test system of Responsivity



Circuit diagrams

### Attention

- 1.This datasheet is downloaded from the website of Murata Manufacturing Co., Ltd. Therefore, it's specifications are subject to change or our products in it may be discontinued without advance notice. Please check with our sales representatives or product engineers before ordering.
- 2.This datasheet has only typical specifications because there is no space for detailed specifications.  
Therefore, please review our product specifications or consult the approval sheet for product specifications before ordering.