

LQP02HQ18NJ02#

“#” at the end indicates the package specification code.

0402 (01005) in mm (in inch), Higher Q

In Production

RoHS

REACH

125
°C max.

Film

High
Q

Reflow
OK

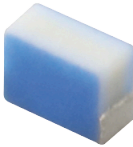
< List of part numbers with package codes >

LQP02HQ18NJ02B LQP02HQ18NJ02E LQP02HQ18NJ02L

Applications

Unsuitable Applications	Please be sure to read and comply with these "Precautions for use."
Specific Applications	Consumer equipment, Medical equipment [GHTF A/B/C] except for implant & surgery & auto injector, Industrial equipment except for transportation & facility & energy equipment Please refer to Our Website and specifications, etc. for information about the performance, functions, quality, management, and safety required for the above applications, and use Products after confirming the performance and reliability of the actual Product.
Recommended Applications	Consumer equipment

Appearance & Shape



Attention

- 1.This datasheet is downloaded from the website of Murata Manufacturing Co., Ltd. Therefore, it's specifications are subject to change or our products in it may be discontinued without advance notice. Please check with our sales representatives or product engineers before ordering.
- 2.This datasheet has only typical specifications because there is no space for detailed specifications.
- Therefore, please review our product specifications or consult the approval sheet for product specifications before ordering.

LQP02HQ18NJ02#

“#” at the end indicates the package specification code.



References

Packaging	Specifications	Standard Packing Quantity
B	Bulk(Bag)	500
E	180mm Paper Tape (W8P2)	15000
L	180Embossed Tape	30000

Mass (typ.)	
1 piece	0.085mg

Attention

1.This datasheet is downloaded from the website of Murata Manufacturing Co., Ltd. Therefore, it's specifications are subject to change or our products in it may be discontinued without advance notice. Please check with our sales representatives or product engineers before ordering.

2.This datasheet has only typical specifications because there is no space for detailed specifications.

Therefore, please review our product specifications or consult the approval sheet for product specifications before ordering.

LQP02HQ18NJ02#

“#” at the end indicates the package specification code.



Specifications

L size	0.4±0.02mm
W size	0.2±0.02mm
T size	0.3±0.02mm
Size code inch (mm)	01005 (0402)
Inductance	18nH±5%
Inductance Test Frequency	500MHz
Rated current (Itemp) (Based on Temperature rise)	160mA
Max. of DC resistance	1.63Ω
Operating Temperature Range(Self-temperature rise is not included)	-55°C to 125°C
Class of magnetic shield	Non-Shielded
Q(min.)	13
Q Test Frequency	500MHz
Self resonance frequency (min.)	3.7GHz
Brand	Murata
Series	LQP02HQ_02

Attention

1.This datasheet is downloaded from the website of Murata Manufacturing Co., Ltd. Therefore, it's specifications are subject to change or our products in it may be discontinued without advance notice. Please check with our sales representatives or product engineers before ordering.

2.This datasheet has only typical specifications because there is no space for detailed specifications.

Therefore, please review our product specifications or consult the approval sheet for product specifications before ordering.

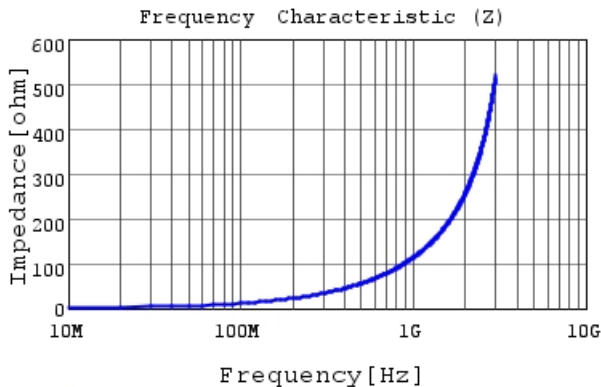
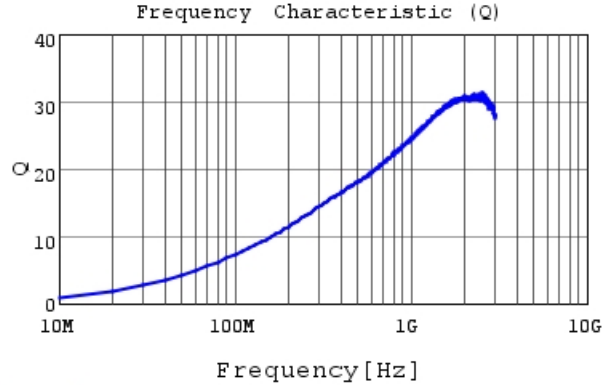
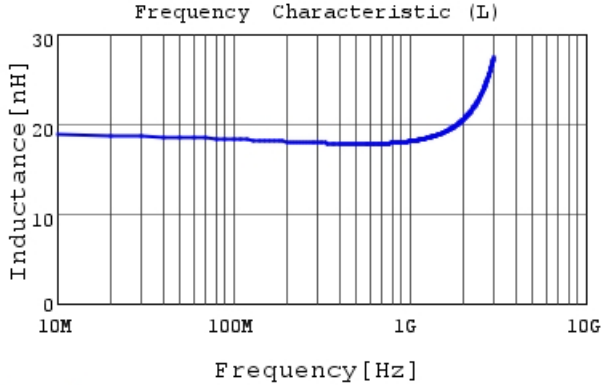
LQP02HQ18NJ02#

“#” at the end indicates the package specification code.



Characteristic Data

The charts below may show another part number which shares its characteristics.



Attention

1.This datasheet is downloaded from the website of Murata Manufacturing Co., Ltd. Therefore, it's specifications are subject to change or our products in it may be discontinued without advance notice. Please check with our sales representatives or product engineers before ordering.

2.This datasheet has only typical specifications because there is no space for detailed specifications.

Therefore, please review our product specifications or consult the approval sheet for product specifications before ordering.