

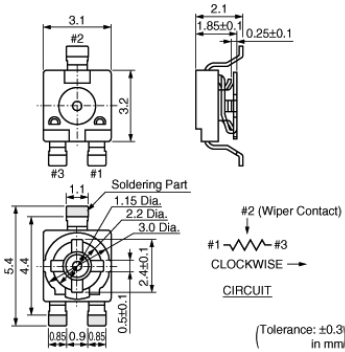
# PVZ3K221E01B00

Discontinued

RoHS

REACH

## Appearance & Shape



## Features

1. Excellent solderability characteristics are achieved via special plating techniques on each termination.
2. Specially designed substrate prevents wicking of flux onto the top of the part body.

## Packaging Information

| Packaging | Specifications | Standard Packing Quantity |
|-----------|----------------|---------------------------|
| B00       | Bulk(Bag)      | 1000                      |

**Attention**  
 1.This datasheet is downloaded from the website of Murata Manufacturing Co., Ltd. Therefore, it's specifications are subject to change or our products in it may be discontinued without advance notice. Please check with our sales representatives or product engineers before ordering.  
 2.This datasheet has only typical specifications because there is no space for detailed specifications.  
 Therefore, please review our product specifications or consult the approval sheet for product specifications before ordering.

# PVZ3K221E01B00



## Specifications

|  |   |
|--|---|
| Power Rating                               | 0.1W                                      |
| Shape                                      | SMD                                       |
| Maximum Working Voltage                    | 50Vdc                                     |
| Adjustment Direction                       | Rear                                      |
| Size                                       | 3mm                                       |
| Auto Adjustment                            | Yes                                       |
| Number of Turns (Effective Rotation Angle) | 1(230°±10°)                               |
| Mechanical Rotation Angle                  | Endless                                   |
| Total Resistance Value                     | 220Ω                                      |
| Total Resistance Value Tolerance           | ±30%                                      |
| Temperature Coefficient of Resistance      | ±500ppm/°C                                |
| Resistance Taper                           | B (Linear)                                |
| Contact Resistance Variation               | 5% max. of nominal total resistance value |
| Residual Resistance                        | 10ohm max.                                |
| Soldering Method                           | Reflow,Soldering Iron                     |
| Torque                                     | 2.0 to 19.6mN · m                         |
| Measure Condition of RatedPower            | 50°C                                      |
| Operating Temperature Range                | -25°C to 85°C                             |
| Mass                                       | 0.04g                                     |

### Attention

1.This datasheet is downloaded from the website of Murata Manufacturing Co., Ltd. Therefore, it's specifications are subject to change or our products in it may be discontinued without advance notice. Please check with our sales representatives or product engineers before ordering.

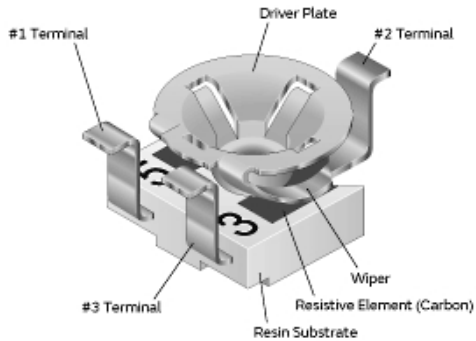
2.This datasheet has only typical specifications because there is no space for detailed specifications.

Therefore, please review our product specifications or consult the approval sheet for product specifications before ordering.

# PVZ3K221E01B00



## Product Data



## Constructions

### Attention

1.This datasheet is downloaded from the website of Murata Manufacturing Co., Ltd. Therefore, it's specifications are subject to change or our products in it may be discontinued without advance notice. Please check with our sales representatives or product engineers before ordering.

2.This datasheet has only typical specifications because there is no space for detailed specifications.

Therefore, please review our product specifications or consult the approval sheet for product specifications before ordering.