

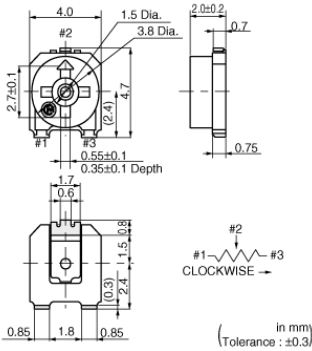
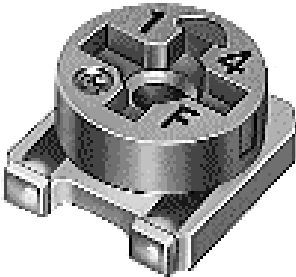
# PVM4A504C01R00

Discontinued

RoHS

REACH

## Appearance & Shape



## Features

1. Sealed construction protects the interior from dust and liquid, which achieves stable performance.
2. Available for flow and reflow soldering methods while maintaining unique sealed construction.
3. Simple construction of 3-piece parts achieves high reliability.
4. Large diameter slot of rotor improves driver insertion.
5. Available for cleaning after soldering.

## Packaging Information

| Packaging | Specifications      | Standard Packing Quantity |
|-----------|---------------------|---------------------------|
| R00       | 180mm Embossed Tape | 500                       |

### Attention

1.This datasheet is downloaded from the website of Murata Manufacturing Co., Ltd. Therefore, it's specifications are subject to change or our products in it may be discontinued without advance notice. Please check with our sales representatives or product engineers before ordering.  
2.This datasheet has only typical specifications because there is no space for detailed specifications.  
Therefore, please review our product specifications or consult the approval sheet for product specifications before ordering.

# PVM4A504C01R00



## Specifications

|  |   |
|--|---|
| Power Rating                               | 0.1W                                      |
| Shape                                      | SMD                                       |
| Maximum Working Voltage                    | 50Vdc                                     |
| Adjustment Direction                       | Top                                       |
| Size                                       | 4mm                                       |
| Auto Adjustment                            | Yes                                       |
| Number of Turns (Effective Rotation Angle) | 1(240°±10°)                               |
| Mechanical Rotation Angle                  | Endless                                   |
| Total Resistance Value                     | 500kΩ                                     |
| Total Resistance Value Tolerance           | ±25%                                      |
| Temperature Coefficient of Resistance      | ±250ppm/°C                                |
| Resistance Taper                           | B (Linear)                                |
| Contact Resistance Variation               | 3% max. of nominal total resistance value |
| Residual Resistance                        | 2% max. of nominal total resistance value |
| Soldering Method                           | Reflow,Soldering Iron                     |
| Torque                                     | 2.0 to 24.5mN · m                         |
| Measure Condition of RatedPower            | 70°C                                      |
| Operating Temperature Range                | -55°C to 125°C                            |
| Mass                                       | 0.08g                                     |

### Attention

1.This datasheet is downloaded from the website of Murata Manufacturing Co., Ltd. Therefore, it's specifications are subject to change or our products in it may be discontinued without advance notice. Please check with our sales representatives or product engineers before ordering.

2.This datasheet has only typical specifications because there is no space for detailed specifications.

Therefore, please review our product specifications or consult the approval sheet for product specifications before ordering.

# PVM4A504C01R00



## Product Data



## Constructions

### Attention

1.This datasheet is downloaded from the website of Murata Manufacturing Co., Ltd. Therefore, it's specifications are subject to change or our products in it may be discontinued without advance notice. Please check with our sales representatives or product engineers before ordering.

2.This datasheet has only typical specifications because there is no space for detailed specifications.

Therefore, please review our product specifications or consult the approval sheet for product specifications before ordering.