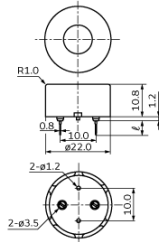


PKM22EPPH4012-B0

In Production RoHS REACH

Appearance & Shape



Part Number	ℓ
PKM22EPPH4007-B0	6.5
PKM22EPPH4012-B0	3.5

ToL: ±0.5 (in mm)

Features

Externally driven piezoelectric sounders are used in digital watches, electronic calculators, telephones and other equipment. They are driven by a signal (ex.: 2048Hz or 4096Hz) from an LSI and provide melodious sound.

Features

1. Low power consumption
2. No noise and high reliability

Applications

Other Usage	Consumer/Industrial
-------------	---------------------

Packaging Information

Packaging	Specifications	Minimum Order Quantity
-B0	Bulk	750

Attention

1.This datasheet is downloaded from the website of Murata Manufacturing Co., Ltd. Therefore, it's specifications are subject to change or our products in it may be discontinued without advance notice. Please check with our sales representatives or product engineers before ordering.

2.This datasheet has only typical specifications because there is no space for detailed specifications.

Therefore, please review our product specifications or consult the approval sheet for product specifications before ordering.

PKM22EPPH4012-B0



Specifications

Oscillation circuits	Not built-in
Size	φ22.0×12.0 mm
Frequency	4.0kHz
Sound Pressure Level	92dB (typ.)
Sound Pressure Level	85dB (min.)
Measure Condition of Sound Pressure Level	[±1.5Vo-p, 4.0kHz, square wave, 10cm]
Capacitance	12nF
Capacitance Tolerance	±30%
Measurement Condition of Capacitance	[1kHz]
Maximum input voltage	±15.0Vo-p max.
Operating Temperature Range	-20°C to 70°C
Storage Temperature Range	-30°C to 80°C
Shape	Lead
Lead Shape	Pin type
Lead length	Lead length:3.5mm
Drive Type	External Drive
EIAJ Part Number	PS-RP2-C22-40

Attention

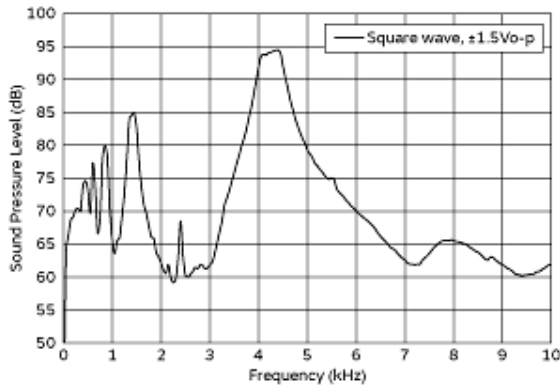
1.This datasheet is downloaded from the website of Murata Manufacturing Co., Ltd. Therefore, it's specifications are subject to change or our products in it may be discontinued without advance notice. Please check with our sales representatives or product engineers before ordering.

2.This datasheet has only typical specifications because there is no space for detailed specifications.

Therefore, please review our product specifications or consult the approval sheet for product specifications before ordering.

PKM22EPPH4012-B0

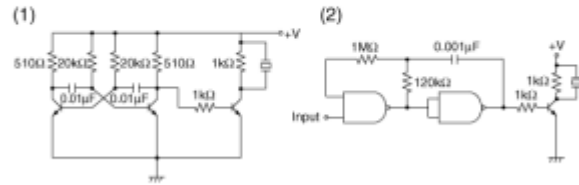
Product Data



Frequency Response

The following are examples of externally driven circuits.

- (1) Unstable multi-vibrator using Tr.
- (2) Circuits using inverters or NAND gates.



Recommended Circuit

Attention

1.This datasheet is downloaded from the website of Murata Manufacturing Co., Ltd. Therefore, it's specifications are subject to change or our products in it may be discontinued without advance notice. Please check with our sales representatives or product engineers before ordering.
2.This datasheet has only typical specifications because there is no space for detailed specifications.
Therefore, please review our product specifications or consult the approval sheet for product specifications before ordering.