

KC355LD72W474KH01#

“#” at the end indicates the package specification code.



< List of part numbers with package codes >

KC355LD72W474KH01L KC355LD72W474KH01K

Applications

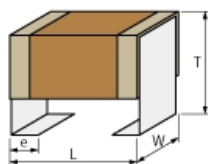
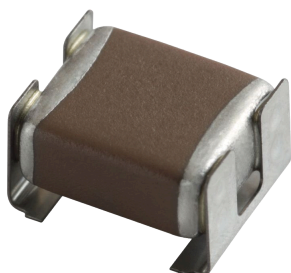
| | |
|-------------------------|--|
| Unsuitable Applications | Please be sure to read and comply with these "Precautions for use." |
| Specific Applications | Automotive powertrain/safety equipment, Automotive infotainment/comfort equipment, Medical equipment [GHTE A/B/C] except for implant equipment Please refer to Our Website and specifications, etc. for information about the performance, functions, quality, management, and safety required for the above applications, and use Products after confirming the performance and reliability of the actual Product. |

References

| Packaging | Specifications | Standard Packing Quantity |
|-----------|-------------------|---------------------------|
| L | 180 Embossed Tape | 400 |
| K | 330 Embossed Tape | 2000 |

| Mass (typ.) | |
|-------------|-------|
| 1 piece | 0.32g |

Appearance & Shape



Attention

1. This datasheet is downloaded from the website of Murata Manufacturing Co., Ltd. Therefore, its specifications are subject to change or our products in it may be discontinued without advance notice. Please check with our sales representatives or product engineers before ordering.

2. This datasheet has only typical specifications because there is no space for detailed specifications.

Therefore, please review our product specifications or consult the approval sheet for product specifications before ordering.

KC355LD72W474KH01#

“#” at the end indicates the package specification code.



Specifications

| | |
|--|----------------|
| Length | 6.1±0.4mm |
| Width | 5.3±0.2mm |
| Thickness | 2.8±0.2mm |
| Capacitance | 0.47μF ±10% |
| Metal terminal width e | 1.2±0.2mm |
| Operating Temperature Range | -55°C to 125°C |
| Rated Voltage | 450Vdc |
| Capacitance change rate | +22/-33% |
| Temperature characteristics (complied standard) | X7T(EIA) |
| Temperature range of temperature characteristics | -55°C to 125°C |

Attention

- 1.This datasheet is downloaded from the website of Murata Manufacturing Co., Ltd. Therefore, it's specifications are subject to change or our products in it may be discontinued without advance notice. Please check with our sales representatives or product engineers before ordering.
- 2.This datasheet has only typical specifications because there is no space for detailed specifications.
Therefore, please review our product specifications or consult the approval sheet for product specifications before ordering.

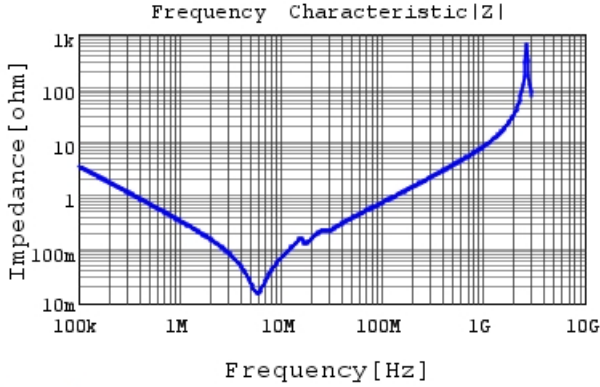
KC355LD72W474KH01#

“#” at the end indicates the package specification code.

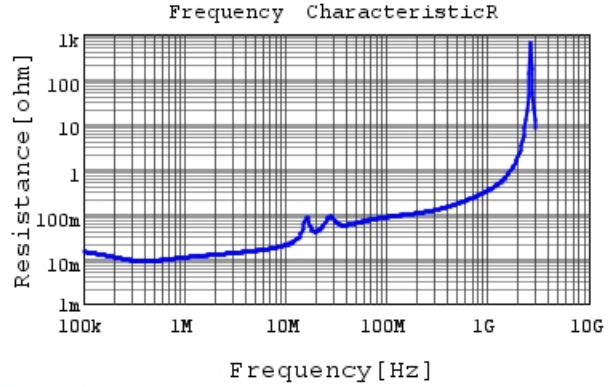


Characteristic Data

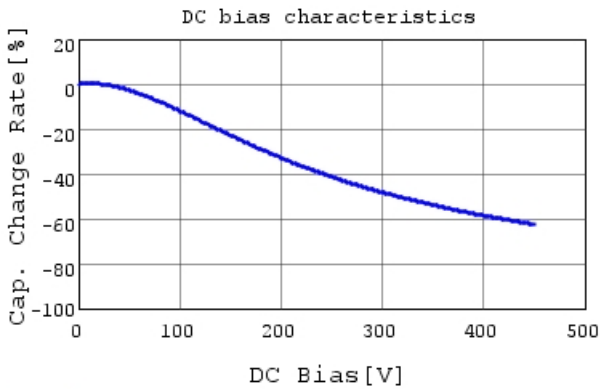
The charts below may show another part number which shares its characteristics.



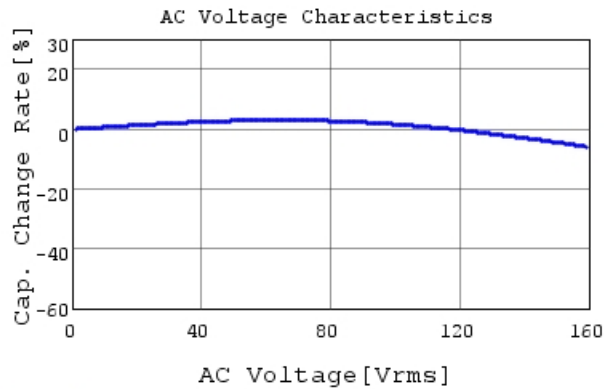
KC355LD72W474KH01 |Z| DCOV, 25degC



KC355LD72W474KH01 R DCOV, 25degC



KC355LD72W474KH01 C-DC bias capchange, 25.0C



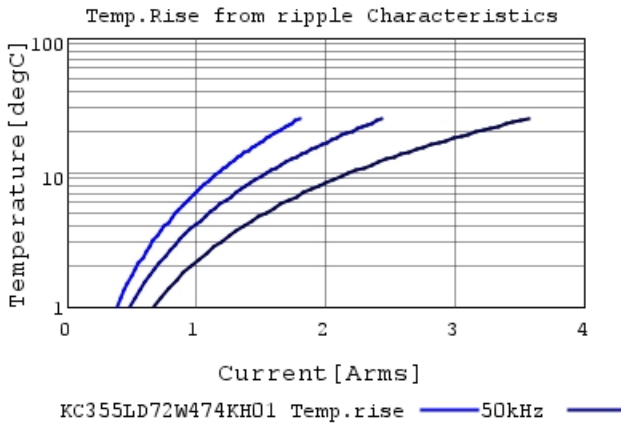
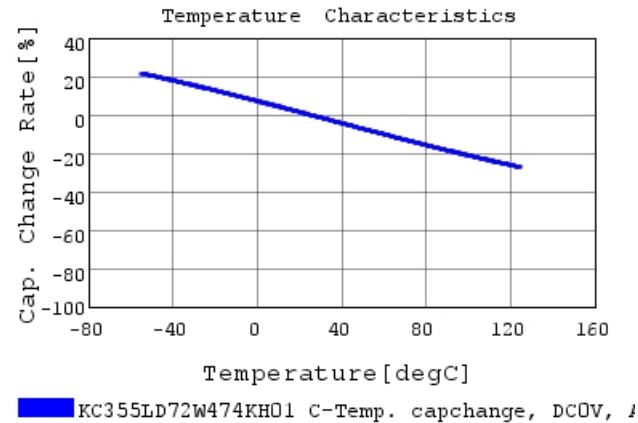
KC355LD72W474KH01 C-AC Voltage capchange, D

Attention

- 1.This datasheet is downloaded from the website of Murata Manufacturing Co., Ltd. Therefore, it's specifications are subject to change or our products in it may be discontinued without advance notice. Please check with our sales representatives or product engineers before ordering.
- 2.This datasheet has only typical specifications because there is no space for detailed specifications.
Therefore, please review our product specifications or consult the approval sheet for product specifications before ordering.

KC355LD72W474KH01#

“#”at the end indicates the package specification code.



Attention

- 1.This datasheet is downloaded from the website of Murata Manufacturing Co., Ltd. Therefore, it's specifications are subject to change or our products in it may be discontinued without advance notice. Please check with our sales representatives or product engineers before ordering.
- 2.This datasheet has only typical specifications because there is no space for detailed specifications.
Therefore, please review our product specifications or consult the approval sheet for product specifications before ordering.