

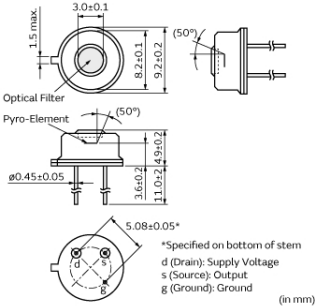
IRA-E420SW1

Discontinued

RoHS

REACH

Appearance & Shape



Packaging Information

Packaging	Specifications	Standard Packing Quantity
-	Box	100

Features

Lead type

Attention
1.This datasheet is downloaded from the website of Murata Manufacturing Co., Ltd. Therefore, it's specifications are subject to change or our products in it may be discontinued without advance notice. Please check with our sales representatives or product engineers before ordering.
2.This datasheet has only typical specifications because there is no space for detailed specifications.
Therefore, please review our product specifications or consult the approval sheet for product specifications before ordering.

IRA-E420SW1



Specifications

Shape	Lead
Electrode	Dia. 1.8mm
Responsivity(typ.)	0.45mV
Supply Voltage Range	3V to 15V
Field of View	$\theta_1 = \theta_2 = 50^\circ$
Operating Temperature Range	-25°C to 70°C
Storage Temperature Range	-30°C to 100°C

Attention

1. This datasheet is downloaded from the website of Murata Manufacturing Co., Ltd. Therefore, its specifications are subject to change or our products in it may be discontinued without advance notice. Please check with our sales representatives or product engineers before ordering.

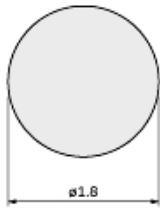
2. This datasheet has only typical specifications because there is no space for detailed specifications.

Therefore, please review our product specifications or consult the approval sheet for product specifications before ordering.

IRA-E420SW1

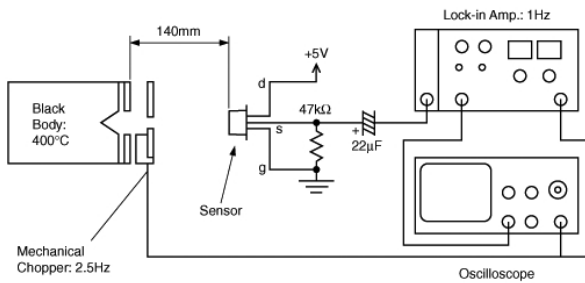
Product Data

λ_p : $4.45 \pm 0.1 \mu m$
 $\lambda_{1/2}$: $365 \pm 15 nm$
 T max. : 85% or more
 Material : Single Crystal Silicon
 Thickness: $0.50 \pm 0.05 mm$

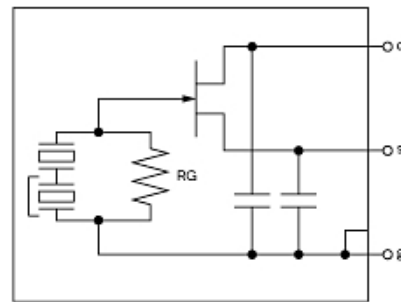


(in mm)

Pyroelectric Element



Filter characteristics



Test system of Responsivity

Circuit diagrams

Attention

1.This datasheet is downloaded from the website of Murata Manufacturing Co., Ltd. Therefore, it's specifications are subject to change or our products in it may be discontinued without advance notice. Please check with our sales representatives or product engineers before ordering.

2.This datasheet has only typical specifications because there is no space for detailed specifications.

Therefore, please review our product specifications or consult the approval sheet for product specifications before ordering.