

# SFELF10M7GAA0-B0

Discontinued

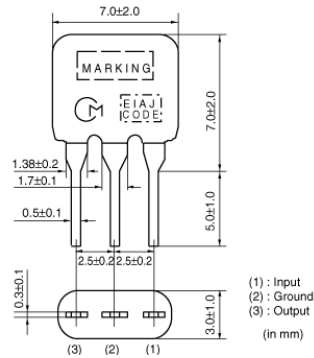
RoHS

REACH

## Applications

|                         |  |
|-------------------------|--|
| Unsuitable Applications | Please be sure to read and comply with these "Precautions for use."  |
| Specific Applications   | Consumer equipment<br>Please refer to Our Website and specifications, etc. for information about the performance, functions, quality, management, and safety required for the above applications, and use Products after confirming the performance and reliability of the actual Product. |

## Appearance & Shape



## Packaging Information

| Packaging | Specifications | Standard Packing Quantity |
|-----------|----------------|---------------------------|
| B0        | Bulk           | 500                       |

## Features

Low loss type SFELF10M7 series for FM receivers are monolithic type ceramic filters that use the thickness expander mode of the piezoelectric ceramic. As part of the environment protection program, the solder for terminal plating and terminal-element connection inside of the ceramic filter contain no lead (Pb).

### Features

1. Insertion loss is 1 to 1.5dB lower than conventional products. These types are useful for elevating the sensitivity of sets.
2. Small dispersion and stable characteristics.
3. Excellent shape factor of frequency response.
4. Good waveform symmetry.

### Attention

1.This datasheet is downloaded from the website of Murata Manufacturing Co., Ltd. Therefore, it's specifications are subject to change or our products in it may be discontinued without advance notice. Please check with our sales representatives or product engineers before ordering.

2.This datasheet has only typical specifications because there is no space for detailed specifications.

Therefore, please review our product specifications or consult the approval sheet for product specifications before ordering.

# SFELF10M7GAA0-B0



## Specifications

|                             |                                    |
|-----------------------------|------------------------------------|
| Operating Temperature Range | -20°C to 80°C                      |
| Shape                       | Lead                               |
| Elements                    | 2                                  |
| Center Frequency            | 10.700MHz                          |
| Center Frequency Tolerance  | ±30kHz                             |
| Nominal Center Value        | No                                 |
| 3dB Bandwidth               | 230kHz±50kHz                       |
| Stop Bandwidth              | 520kHz                             |
| Area of Stop Bandwidth      | [within 20dB]                      |
| Spurious Attenuation        | 35dB[within 9MHz to fo]            |
| Insertion Loss              | 3.0dB±2.0dB(at minimum loss point) |
| Ripple                      | 1.0dBmax.(at minimum loss point)   |
| Input/Output Impedance      | 330Ω                               |
| Mass                        | 178mg                              |

### Attention

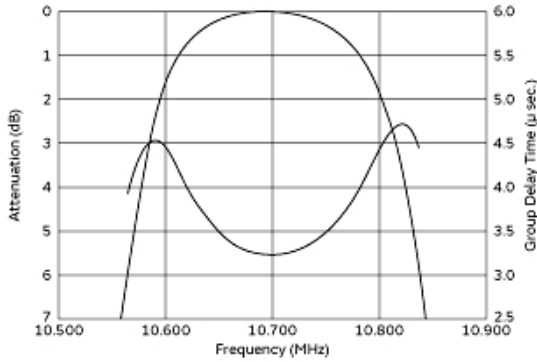
1.This datasheet is downloaded from the website of Murata Manufacturing Co., Ltd. Therefore, it's specifications are subject to change or our products in it may be discontinued without advance notice. Please check with our sales representatives or product engineers before ordering.

2.This datasheet has only typical specifications because there is no space for detailed specifications.

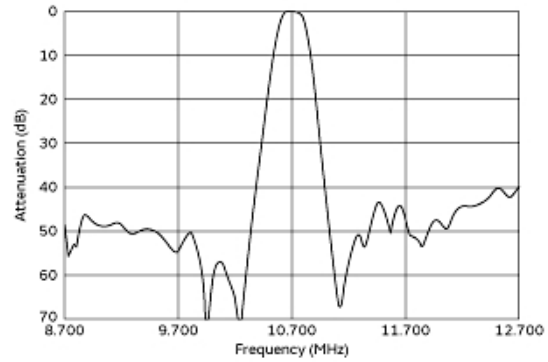
Therefore, please review our product specifications or consult the approval sheet for product specifications before ordering.

# SFELF10M7GAA0-B0

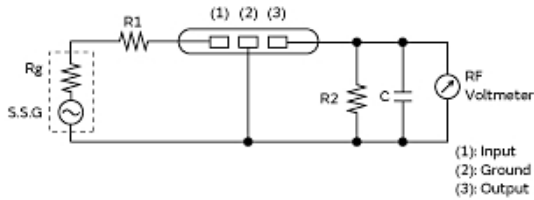
## Product Data



Frequency Characteristics



Spurious Response



Rg=R1=R2=Input and Output Impedance  
C=10pF (including stray capacitance and input capacitance of RF voltmeter.)

Measurement Circuit

### Attention

- 1.This datasheet is downloaded from the website of Murata Manufacturing Co., Ltd. Therefore, it's specifications are subject to change or our products in it may be discontinued without advance notice. Please check with our sales representatives or product engineers before ordering.
- 2.This datasheet has only typical specifications because there is no space for detailed specifications.  
Therefore, please review our product specifications or consult the approval sheet for product specifications before ordering.